
Aquaforest Searchlight Troubleshooting Guide



Version 2.0
January 2020

Contents

1	INTRODUCTION.....	1
1.1	INSTALLATION	1
2	POST INSTALLATION	1
2.1	SHAREPOINT URL FORMAT.....	1
2.2	RUNNING THE DIAGNOSTIC TOOL	2
2.3	LONG PATH SUPPORT.....	3
2.4	EMPTY DROP DOWN LISTS.....	4
2.5	CERTIFICATE ERROR	7
2.5.1	<i>Retrieving certificate thumbprint/fingerprint.....</i>	<i>7</i>

1 Introduction

This brief guide is intended to summarize the most common configuration issues that can affect the operation of Aquaforest Searchlight version 2.x. The Release Notes has more information on more specific errors. You can also check [Searchlight blogs](#) for even more information.

1.1 Installation

The installation process is relatively straight forward by following the steps on the GUI. The installation should be carried out whilst being logged in as a System Administrator. In cases where the logged-on user does not have full admin privileges some components will fail to install.

A recommend approach is to run the Aquaforest_searchlight.msi through the command prompt. You will need to open an instance of command prompt with the 'Run as Administrator' option.

2 Post Installation

2.1 SharePoint URL format

Below is an example of how to set the SharePoint URL format when setting up a document library in Searchlight.

Sharepoint 2010:

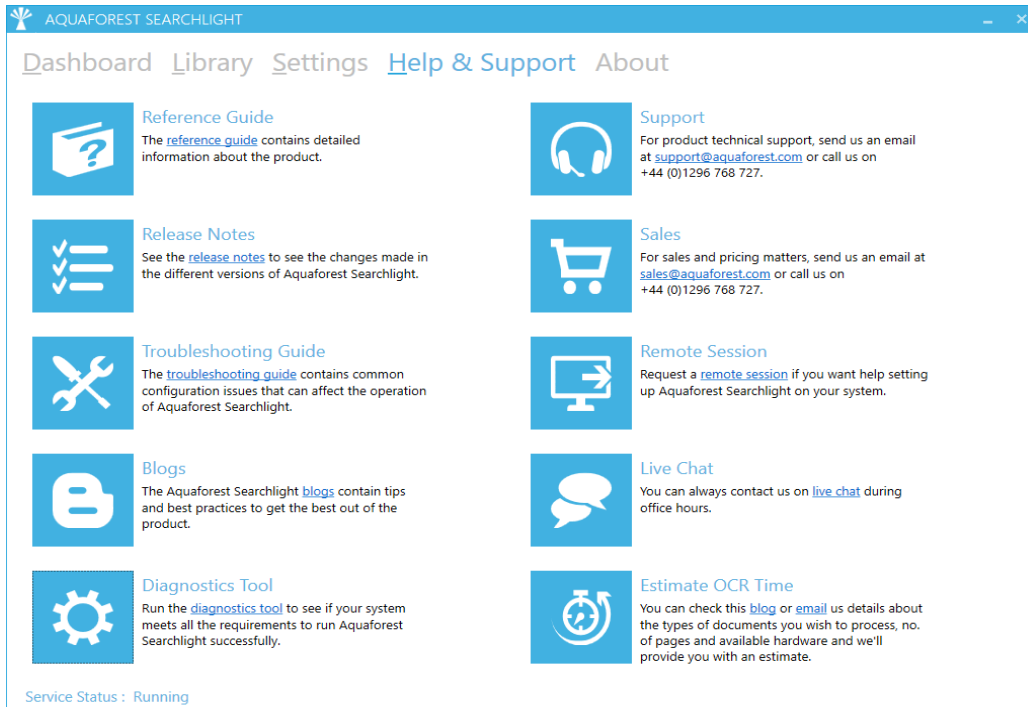
- Actual URL:
<https://SharePoint2010/site/myLibrary/myForms/AllItems.aspx>
- Supported URL format in Searchlight:
<https://SharePoint2010/site/myLibrary>

SharePoint 2013:

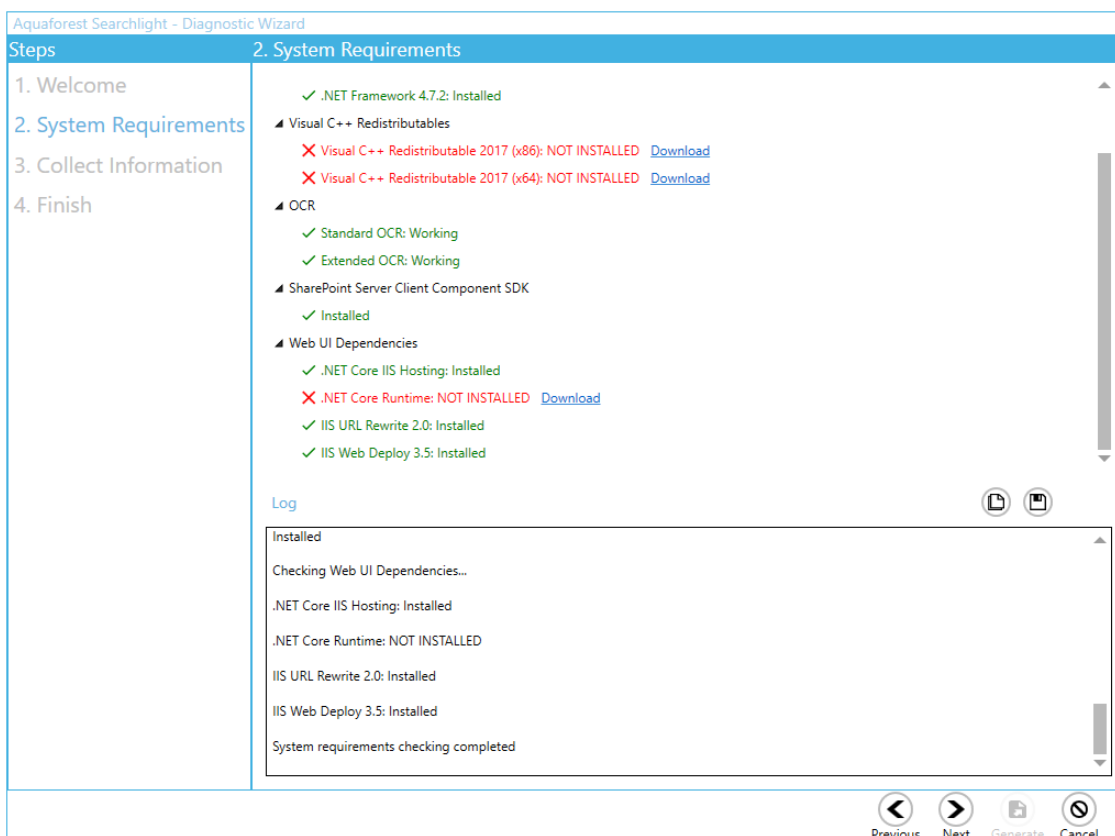
- Actual URL:
https://SharePoint2013/site/Library/_layouts/15/start.aspx#/mylibrary/Forms/AllItems.aspx
- Supported URL format in Searchlight:
<https://SharePoint2013/site/Library/mylibrary>

2.2 Running the Diagnostic Tool

Once installed you can run the **Diagnostic Tool** which can be accessed from the **Help & Support** tab on the main screen.



This will initiate the diagnostic wizard which will run various checks to determine if your system meets all the requirements needed to run Searchlight. If there are dependencies that are not installed, download them using the link in the diagnostic tool and install them. If you notice any failures during the run contact the support team.

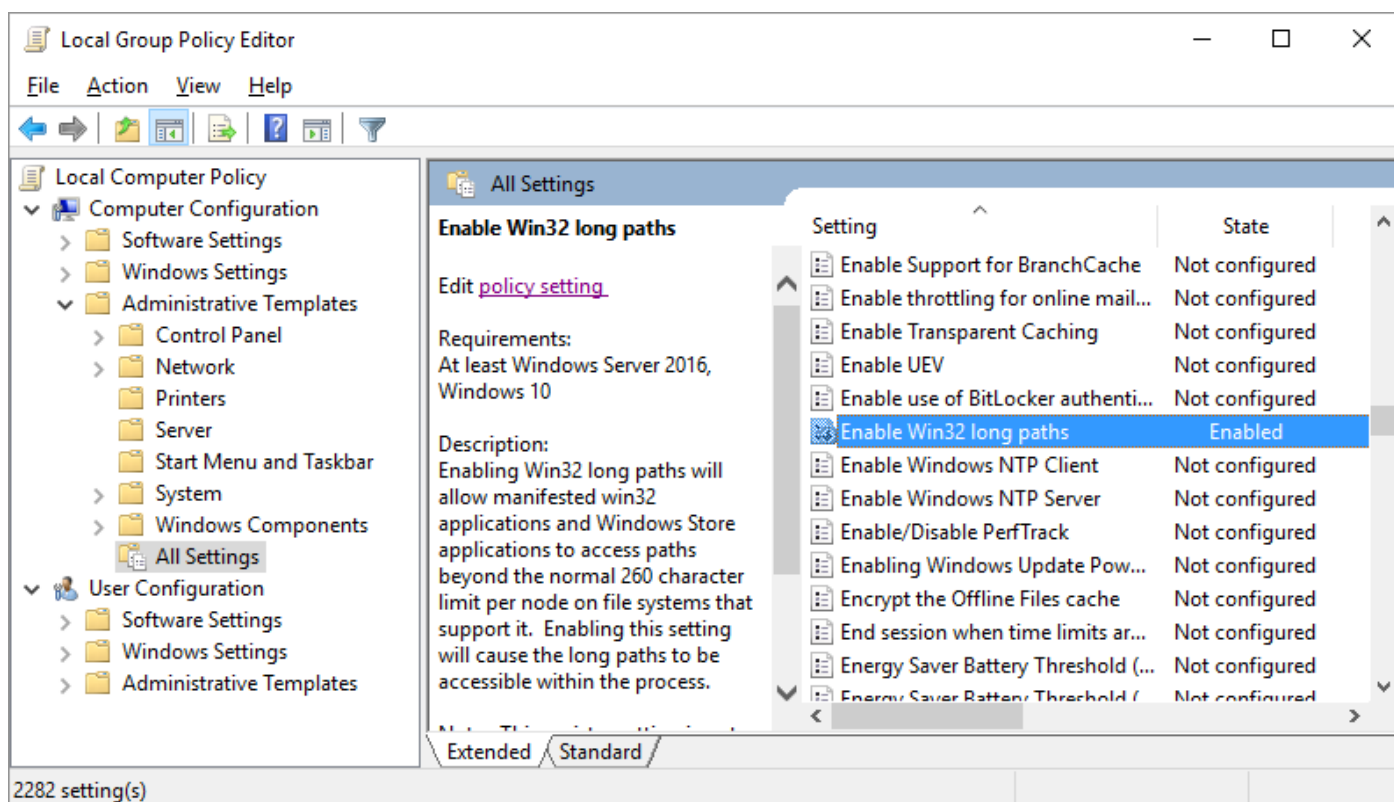


2.3 Long Path Support

When enumerating documents to process, Searchlight can come across documents that exceed the file path length enforced by windows. These files are skipped and not processed.

Starting from Windows 10 and Windows Server 2016, there is now support for long paths. However, long paths support is not enabled by default. You need enable the following policy to take advantage of this new feature.

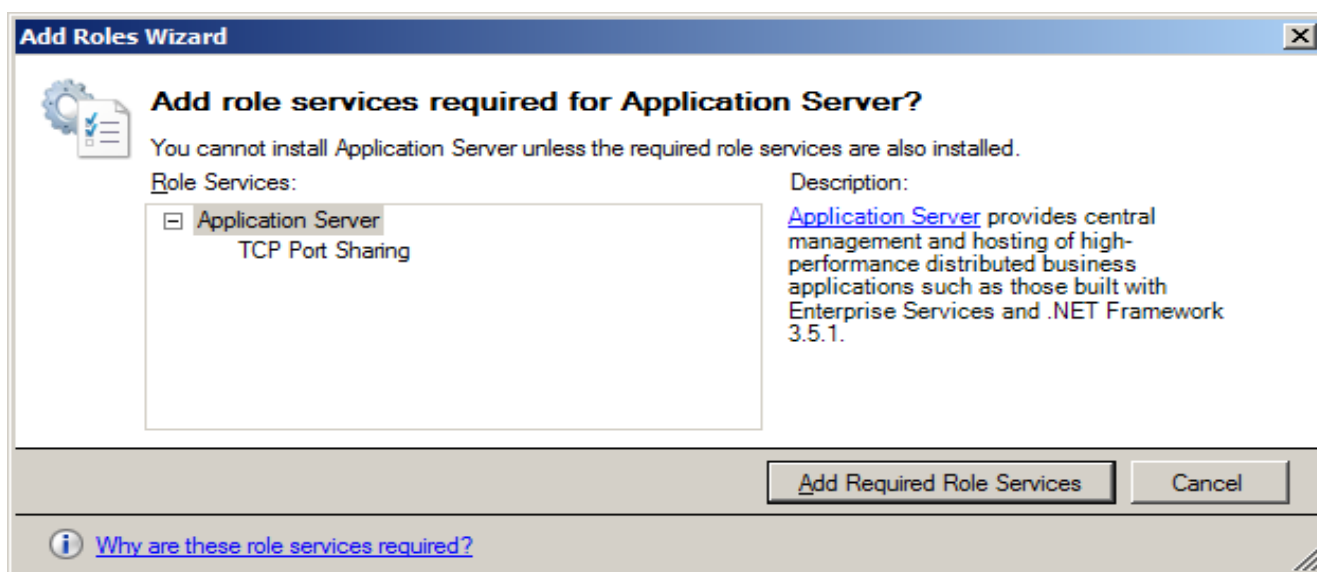
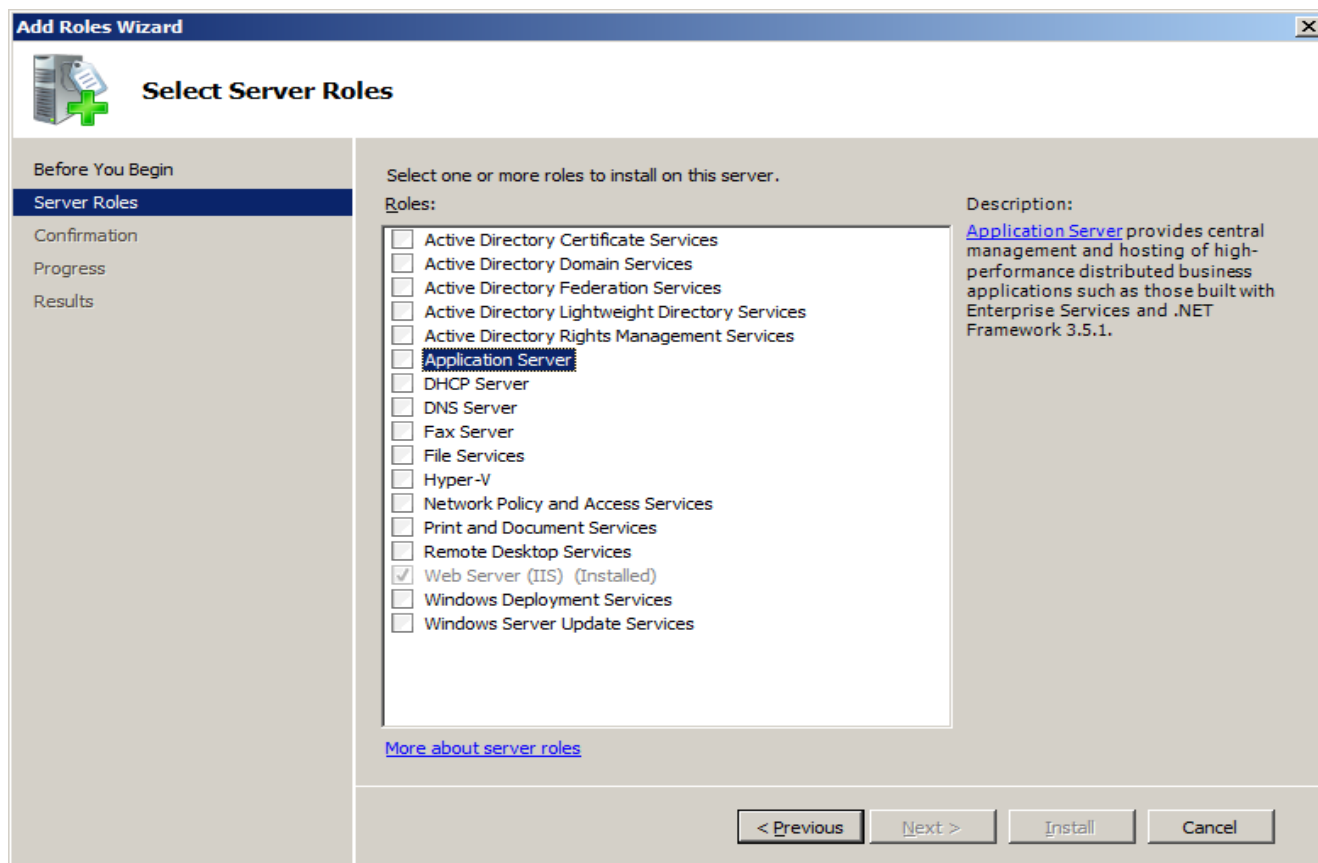
Open Global Policy Editor (**Start > Run > gpedit.msc**) and enable **“Enable Win32 long paths”**.



Restart the Searchlight UI and service after making changes to this policy.

2.4 Empty drop down lists

This is a symptom seen on Windows Server 2008 and Windows Server 2012. If you experience the dropdown lists being empty within Aquaforest Searchlight and are using one of the above operating system, then you will need to enable the "Application Server" Role. The following screenshots illustrate how to enable the "Application Server" Role:



Add Roles Wizard

Select Server Roles

Before You Begin

Server Roles

Application Server

Role Services

Confirmation

Progress

Results

Select one or more roles to install on this server.

Roles:

- Active Directory Certificate Services
- Active Directory Domain Services
- Active Directory Federation Services
- Active Directory Lightweight Directory Services
- Active Directory Rights Management Services
- Application Server**
- DHCP Server
- DNS Server
- Fax Server
- File Services
- Hyper-V
- Network Policy and Access Services
- Print and Document Services
- Remote Desktop Services
- Web Server (IIS) (Installed)
- Windows Deployment Services
- Windows Server Update Services

Description:

[Application Server](#) provides central management and hosting of high-performance distributed business applications such as those built with Enterprise Services and .NET Framework 3.5.1.

[More about server roles](#)

< Previous Next > Install Cancel

Add Roles Wizard

Select Role Services

Before You Begin

Server Roles

Application Server

Role Services

Confirmation

Progress

Results

Select the role services to install for Application Server:

Role services:

- .NET Framework 3.5.1**
- Web Server (IIS) Support
- COM+ Network Access
- TCP Port Sharing
- Windows Process Activation Service Support (Installed)
 - HTTP Activation
 - Message Queuing Activation (Installed)
 - TCP Activation (Installed)
 - Named Pipes Activation (Installed)
- Distributed Transactions
 - Incoming Remote Transactions
 - Outgoing Remote Transactions
 - WS-Atomic Transactions

Description:

[.NET Framework 3.5.1](#) includes Windows Communication Foundation (WCF), Windows Workflow Foundation (WF) and Windows Presentation Foundation (WPF). These frameworks provide a powerful infrastructure for creating securely connected services, workflow driven applications, and rich user experiences.

[More about role services](#)

< Previous Next > Install Cancel



Confirm Installation Selections

Before You Begin

Server Roles

Application Server


Role Services


Confirmation


Progress

Results

To install the following roles, role services, or features, click Install.

 1 informational message below

 This server might need to be restarted after the installation completes.

 **Application Server**

.NET Framework 3.5.1

TCP Port Sharing

[Print, e-mail, or save this information](#)

< Previous

Next >

Install

Cancel

2.5 Certificate Error

If Searchlight tries to access a site that has an invalid SSL certificate, it will fail with an error message like "Could not establish trust relationship for the SSL/TLS secure channel."

There are 2 settings in the **Searchlight.config** file that can be used to fix this.

```
<!--  
To enable Searchlight to process sites that have invalid certificates or certificates with errors,  
enter a comma separated list of all thumbprints of certificates that you recognize  
in the setting below to make Searchlight ignore them and continue processing. Alternatively, set  
"ignoreAllCertificateErrors" to "true" (use at your own risk!).  
-->  
<add key="recognizedCertificateThumbprints" value="" />  
<add key="ignoreAllCertificateErrors" value="false" />
```

- **recognizedCertificateThumbprints**

Use this setting to add the thumbprint/fingerprint (SHA-1) of the certificate that is causing the issue. More thumbprints can be added by separating each one with a comma. This is recommended way as it instructs Searchlight to only ignore errors of recognized certificates.

See how to retrieve the thumbprint or fingerprint of the invalid certificate using [Chrome](#), [Firefox](#) and [Edge](#) web browser below.

- **ignoreAllCertificateErrors**

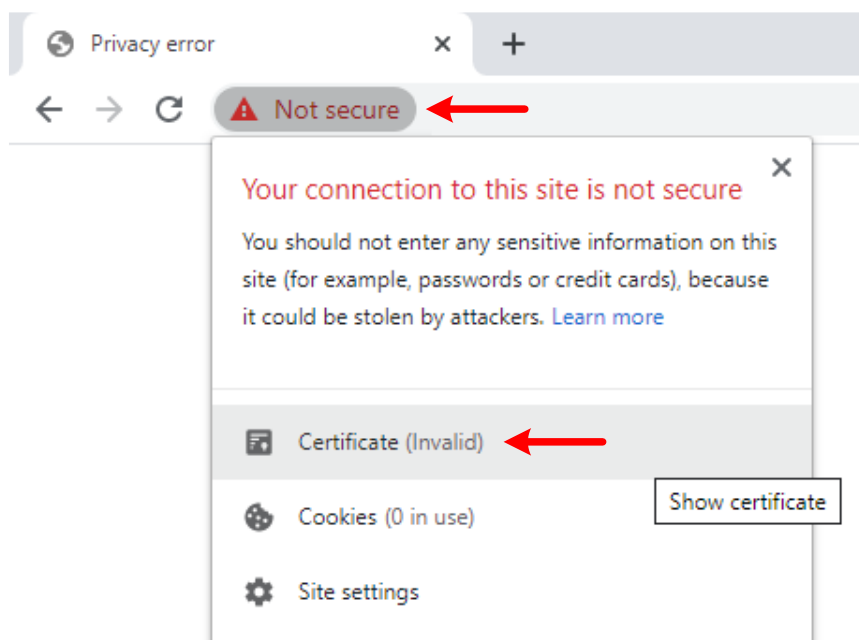
Set this setting to true to ignore all errors for all certificates.

NOTE: The Searchlight UI and service must be restarted after making the change.

2.5.1 Retrieving certificate thumbprint/fingerprint

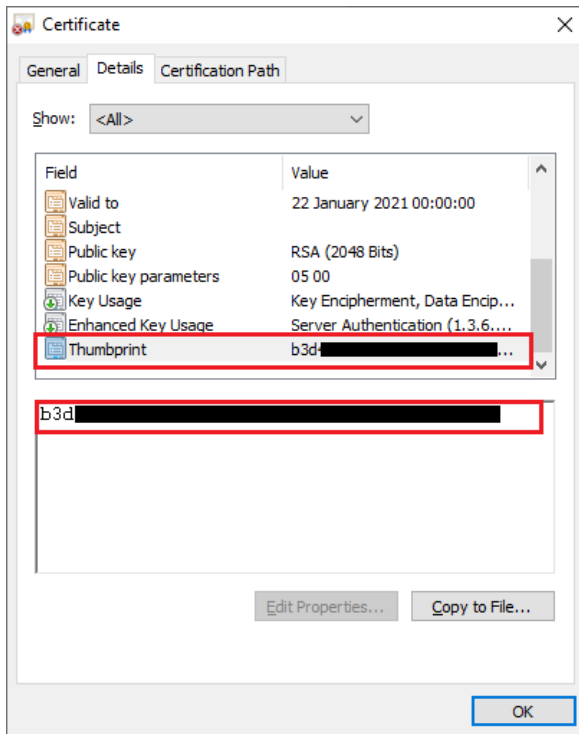
To retrieve a site's certificate's thumbprint, first open the site in a web browser. If the certificate is invalid, a warning will be shown in the address bar.

- **Chrome**



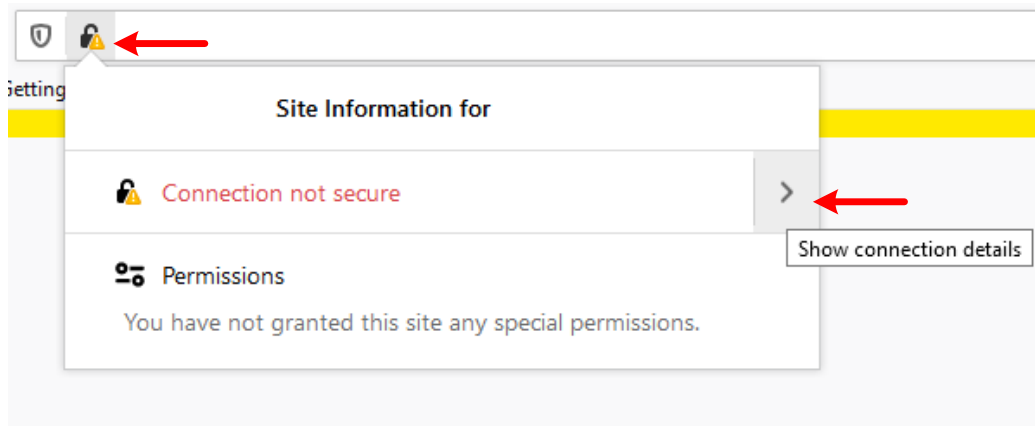
1. Click on **Not secure** > **Certificate (Invalid)**

2. A popup window will appear

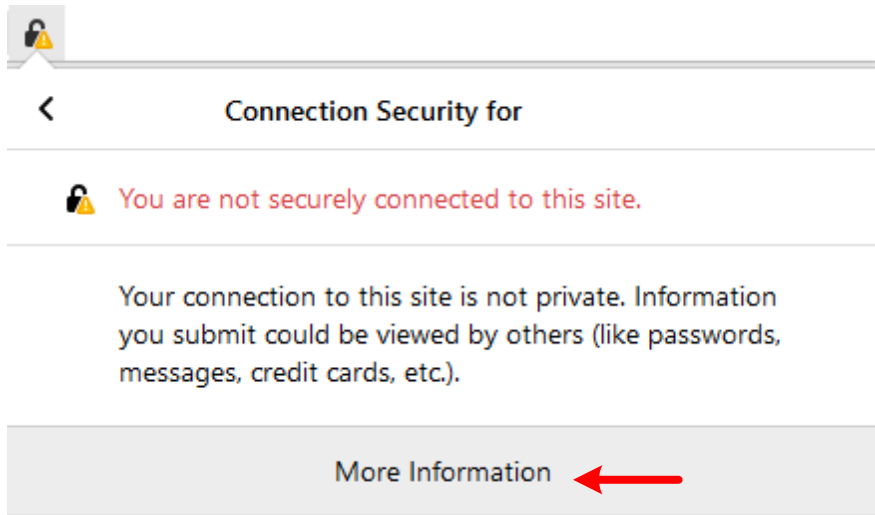


3. On the **Details** tab, select **Thumbprint** and copy the value in the **recognizedCertificateThumbprints** setting in **Searchlight.config**.

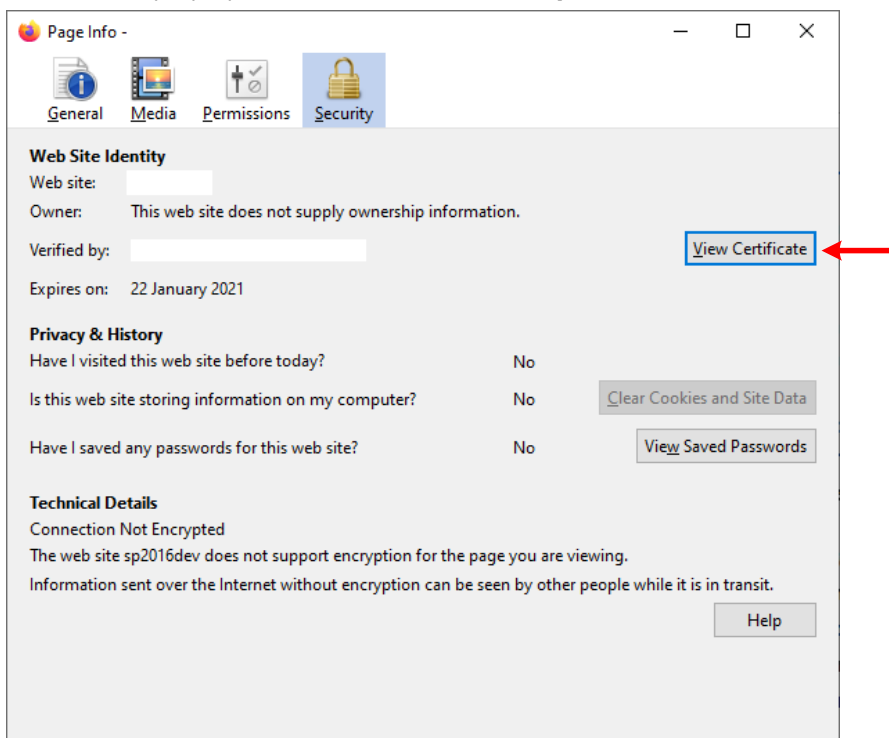
- **Firefox**



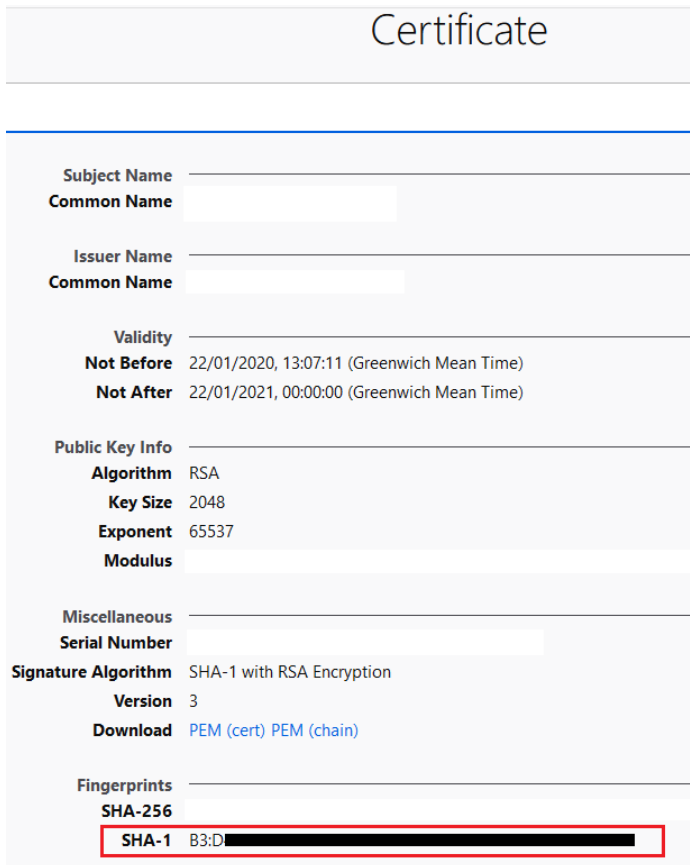
1. Click on the padlock icon with an exclamation mark
2. Click on the arrow new to **Connection not secure**
3. A new popup will be shown. Click on **More Information**



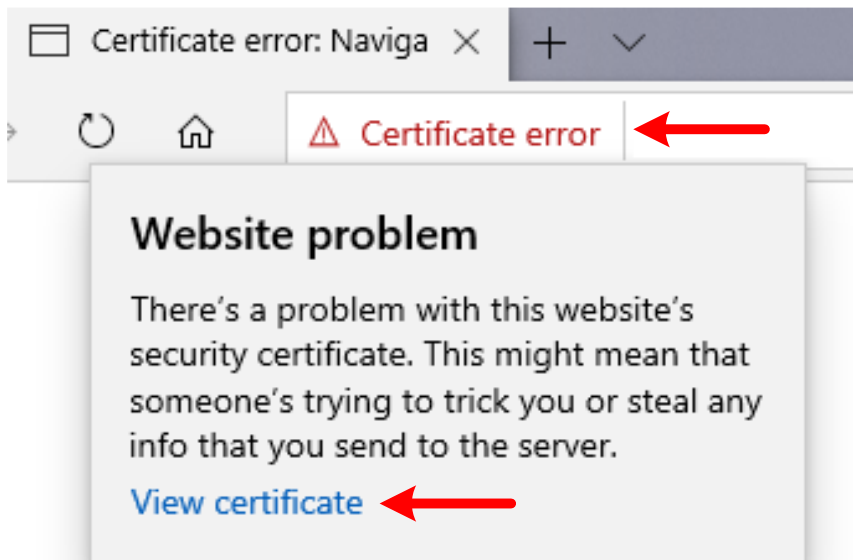
4. In the new popup window, under **Security**, select **View Certificate**



5. Copy the value of **SHA-1** under **Fingerprints** and paste it in the **recognizedCertificateThumbprints** setting



- **Edge**



1. Click on **Certificate error** > **View certificate**
2. In the popup window, copy the value of **SHA1 fingerprint** and paste it in the **recognizedCertificateThumbprints** setting.

Certificate Information



Certificate error (X)

Issued by

Valid from

22 January 2020 13:07:11

Valid to

22 January 2021 00:00:00

Subject organisation

Unknown

Serial number

SHA-256 fingerprint

SHA1 fingerprint

B3:D