
Autobahn DX 4.1

Reference Guide



Version 4.1
September 2017

CONTENTS

1	PRODUCT OVERVIEW AND CONCEPTS	4
1.1	OVERVIEW	4
2	AUTOBAHN DX ARCHITECTURE AND CONCEPTS	6
2.1	AUTOBAHN WINDOWS SERVICE.....	6
2.2	XML JOB DEFINITION FILES	6
2.3	AUTOBAHN ADMINISTRATION	7
2.3.1	<i>Quick Job</i>	7
2.3.2	<i>Job Manager</i>	7
2.3.3	<i>Designer</i>	7
2.3.4	<i>Monitor</i>	7
2.4	DOCUMENT DIRECTORIES.....	7
2.5	DOCUMENT PROCESSING	7
2.6	JOB STATUS.....	7
2.7	AUTOBAHN DX .NET JOB API	7
2.8	MULTI-CORE/CPU SUPPORT	7
2.9	FILE ACCESS PERMISSIONS.....	8
2.10	FILE NAME LENGTH	8
2.10.1	<i>File Name Length - UNC Paths</i>	8
2.10.2	<i>File Name Length – Autobahn DX Working Folder Paths</i>	8
3	INSTALLATION AND LICENSING	10
3.1	SYSTEM REQUIREMENTS	10
3.2	PRODUCT LICENSING	10
3.3	ENTERING LICENSE KEYS.....	11
4	AUTOBAHN DX QUICK START.....	12
5	USING THE QUICK JOB TAB	15
5.1.1	<i>Job Definition Section</i>	16
5.1.2	<i>OCR Options Section</i>	17
5.1.3	<i>OCR PDF Options Section</i>	17
5.1.4	<i>PDF to TIFF Options Section</i>	18
5.1.5	<i>Split Options Section</i>	19
5.1.6	<i>Other Options Section</i>	19
5.1.7	<i>Barcode Options</i>	20
5.1.8	<i>Task Log Section</i>	20
5.2	SECURITY SETTINGS.....	21
5.2.1	<i>Target Document Security</i>	21
5.3	DOCUMENT METADATA.....	22
5.4	DOCUMENT OPTIONS.....	23
5.4.1	<i>Display Modes</i>	23
5.4.2	<i>Settings</i>	24
5.5	PDF CONVERSION SETTINGS.....	24
5.5.1	<i>Conversion Control</i>	25
5.5.2	<i>Microsoft Office Conversion Settings</i>	25
5.5.3	<i>Image and Font Conversion Settings</i>	27

5.6	ADVANCED FLAGS.....	28
6	THE AUTOBAHN DX ADMINISTRATION TOOL.....	29
6.1	JOB MANAGER.....	29
6.2	JOB DESIGNER	30
6.2.1	Menu Items.....	30
6.2.2	Fields.....	31
6.2.3	Job Scheduling.....	34
6.2.4	Alerts	35
6.2.5	Workflow Processing versus In-Place Processing	36
6.2.6	Example In-Place Job Setup	36
6.2.7	Step Types.....	37
6.2.8	Step Type Properties.....	67
6.2.9	Stamps	68
6.3	MONITOR	70
6.4	MODULES AND OPTIONS.....	71
6.5	RUNNING JOBS VIA JOB MANAGER OR DESIGNER	72
7	SCRIPTING CUSTOM STEPS.....	73
7.1	CUSTOM SCRIPT EXAMPLE.....	73
7.2	CUSTOM EXAMPLE SCRIPT.....	74
7.3	FURTHER EXAMPLES.....	76
7.3.1	Postscript to PDF: custom_ps.wsf	76
7.3.2	MSG to PDF: custom_MSG.wsf	76
8	JOB DEFINITION XML FILES.....	77
8.1	OVERVIEW OF JOB DEFINITION CREATION AND PROCESSING	77
8.2	JOB IDS.....	77
8.3	SAMPLE JOB DEFINITION FILE (EXCLUDING STEP DETAILS)	77
8.4	SAMPLE STEP DETAILS	79
9	EXTENDED STEP TYPES: STEP TYPE DEFINITION XML FILES.....	81
9.1	SAMPLE STEPTYPE DEFINITION	81
10	AUTOBAHN DX COMMAND LINE INTERFACE	83
10.1.1	General Job Options	83
10.1.2	Split Parameters [used with splittiff and splitpdf operations]	85
10.1.3	Conversion Settings [used with tifftopdf and ocrimagepdf operations].....	85
10.1.4	PDF Conversion Options [used with topdf operations].....	86
10.1.5	PDF File Processing.....	89
10.1.6	OCR [used with ocrimagepdf or tifftopdf when searchable pdf has been chosen] 89	
10.1.7	PDF Output File Settings – [used with pdfprops].....	91
10.1.8	Sharepoint Settings – [used with sharepointdownload and sharepointupload] 92	
10.1.9	Compress PDF Settings – [used with compresspdf].....	94
10.1.10	Extended Steps	94
10.1.11	Create XML Property File – [used with getxmlpdf]	94
10.1.12	OCR Any File to PDF– [used with ocranyfile]	94
10.1.13	TIFF/PDF Barcode – [used with barcode]	95
11	AUTOBAHN DX .NET API	98
11.1	API EXAMPLE (LOCAL JOB).....	98

11.2	API EXAMPLE (REMOTE JOB).....	99
12	OCR PROPERTIES FILE AND THE ADVANCE PRE PROCESSING OPTION	102
12.1	PROPERTIES FILE	102
12.2	ADVANCE PRE PROCESSING	104
13	THE MERGE FLAG FEATURE.....	106
14	EXTENDED OCR MODULE.....	107
14.1	TRIAL LICENSING	107
14.2	NEW JOB MANAGER STEPS	107
14.3	EXTENDED COMMAND LINE INTERFACE.....	108
15	IHQC MODULE	115
15.1	TRIAL LICENSING	115
15.2	IHQC PROPERTIES.....	115
15.3	COMMAND LINE INTERFACE	115
16	MULTICORE MODULE	117
16.1	TRIAL LICENSING	117
16.2	USING THE MULTICORE MODULE.....	117
16.3	COMMAND LINE INTERFACE	118
17	BARCODE SUPPORT	119
17.1	BARCODE FORMATS.....	119
18	HIGH AVAILABILITY	120
18.1	BACKGROUND INFORMATION.....	120
18.2	CONFIGURING THE JOB ON HOST ONE:	120
18.3	CONFIGURING THE JOB ON HOST TWO:	121
18.4	CONFIGURING THE SCHEDULER.....	122
19	ANY FILE TO PDF	123
19.1	OCR ANY FILE TO PDF.....	123
19.1.1	<i>Configuration</i>	<i>123</i>
19.2	CONVERT ANY FILE TO PDF.....	124
19.2.1	<i>Overview of the Different Conversions Methods</i>	<i>124</i>
19.2.2	<i>Comparison of the features provided by the different methods.....</i>	<i>125</i>
19.2.3	<i>Mappings Between Configuration File and the Conversion Methods</i>	<i>127</i>
20	KINGFISHER JOB STEP	128
21	AUTOBAHN DX CONFIGURATION FILES	129
21.1	TIFFJUNCTION.EXE.CONFIG	129
21.2	PJ.EXE.CONFIG.....	130
21.3	OTHERS	131
22	AUTOBAHN DX DIRECTORIES.....	132
23	ACKNOWLEDGEMENTS.....	133

1 PRODUCT OVERVIEW AND CONCEPTS

1.1 Overview

Autobahn DX is a Document Processing product designed to fit into an organization's document workflow. It can process and convert a variety of different types of document including TIFF images, Microsoft Office documents and HTML pages, convert those documents to searchable PDFs and perform a variety of other customizable activities.

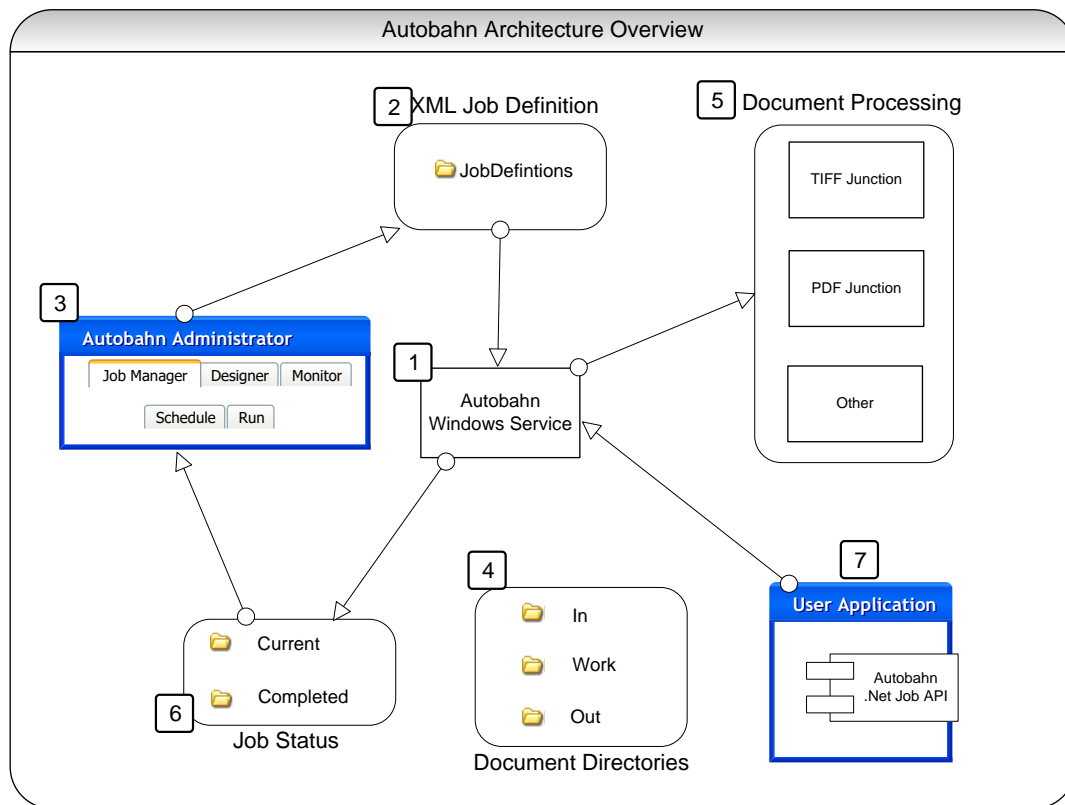
Autobahn includes PDF Junction (Professional Edition) and TIFF Junction (Professional Edition). For reference, this matrix highlights the functionality of Aquaforest's document conversion and processing products:

	TIFF Junction Standard	TIFF Junction Professional	PDF Junction Standard	PDF Junction Professional	Autobahn DX (Workstation)	Autobahn DX (Server)	Autobahn DX (Extended OCR)	Autobahn DX (Extended OCR Asian)	Autobahn DX (Extended OCR - IHQC)	Autobahn DX (Extended OCR Asian – IHQC)	Autobahn DX (Multicore)
Convert TIFF to PDF	•				•	•	•	•	•	•	•
Split & Merge TIFFs	•				•	•	•	•	•	•	•
Convert PDF to TIFF	•	•	•	•	•	•	•	•	•	•	•
TIFF & PDF Barcode Processing	•	•	•	•	•	•	•	•	•	•	•
Extract Raw Text from PDF			•	•	•	•	•	•	•	•	•
OCR & Convert TIFF to Searchable PDF		•			•	•	•	•	•	•	•
OCR & Convert Image-Only PDF to Searchable PDF		•			•	•	•	•	•	•	•
Split & Merge PDFs			•	•	•	•	•	•	•	•	•
Set Security on PDFs			•	•	•	•	•	•	•	•	•
Multi Core Processing											•
Extended OCR							•	•	•	•	
Asian Extended OCR								•		•	
Intelligent High Quality Compression									•	•	
Convert Microsoft Office Documents to PDF*				•	•	•	•	•	•	•	•
Convert HTML, Text and Other Documents to PDF*				•	•	•	•	•	•	•	•
Process Files, Folders or Entire Trees	•	•	•	•	•	•	•	•	•	•	•

Command Line Interface	•	•	•	•		•	•	•	•	•	•
Support for Windows 2003, 2008, XP Professional, Vista and 7	•	•	•	•	•	•	•	•	•	•	•
Graphically Define Document Processing					•	•	•	•	•	•	•
Windows Service						•	•	•	•	•	•
Scheduled & Ad-hoc Job Support via XML Job Tickets						•	•	•	•	•	•
Watched Folders						•	•	•	•	•	•
.Net API Interface						•	•	•	•	•	•
Customizable Script Support						•	•	•	•	•	•
Email Alerts						•	•	•	•	•	•
Read Mailbox & Send Converted Documents by Email						•	•	•	•	•	•
Multi-User access to watched folders						•	•	•	•	•	•

*Requires native application present on server.

2 AUTOBAHN DX ARCHITECTURE AND CONCEPTS



2.1 Autobahn Windows Service

This is the heart of the product and controls the execution of both scheduled jobs and ad-hoc jobs whether submitted via the Autobahn Manager or via the Autobahn Job API. The service analyses the XML Job Definition files on start-up and when new files are created in the Job Definition directory by the Autobahn Manager, or via the Job API. The XML Job Definition Files describe the steps to be carried out to complete the job and the Autobahn Service will spawn sub-jobs (such as TIFF Junction or PDF Junction) where required. Job Status records and logs are maintained and can be reviewed in the Job Monitor and Job Manager.

2.2 XML Job Definition Files

Each Job has one or more XML Job Ticket files that define many aspects of the job including:

- Job ID
- Job Name
- Scheduling Information
- Input Directory
- Work Directory
- Output Directory
- Etc.

[Section 8](#) of this document describes the XML Job Definition Files in full detail.

2.3 Autobahn Administration

This is a windows application that provides the primary administration interface and comprises the following main sections:

2.3.1 Quick Job

Jobs can be defined and run interactively which provides a convenient method for testing the product's capabilities and running simple jobs.

2.3.2 Job Manager

This provides a method of managing the scheduled jobs previously defined in the Process Designer they can be selected and then deleted, edited (in the process designer) or scheduled.

2.3.3 Designer

This provides a graphical interface to allow creation of a series of steps that make up a job. The process specification can then be saved (as an XML Job File), and run or scheduled via the Job Manager section of the application.

2.3.4 Monitor

This shows the current service status and provides a monitor interface to currently executing jobs. It also allows the service to be stopped or started.

2.4 Document Directories

Each job will have a set of directories containing the source documents, and directories for work, errors and output.

2.5 Document Processing

Each step in a Job will involve a separate Job Element process being spawned by the Autobahn Service. This may involve its own Sub-Job XML File and always will in the case where the step will execute TIFF Junction or PDF Junction.

2.6 Job Status

To support the Job Monitor, a mechanism is required to indicate the progress of current jobs, in particular start time and current log file output.

2.7 Autobahn DX .Net Job API

A .Net API is provided to allow user application to create and execute ad-hoc jobs. See [section 11](#) for further details.

2.8 Multi-Core/CPU Support

Enhanced support for multi-core/CPU architectures was added in version 2.1. Whilst it has always been possible to run multiple concurrent jobs to exploit multiples cores/CPU's, processing of single large TIFF or image PDF files to searchable PDF has been single threaded and only been able to exploit a single core/CPU.

2.9 File Access Permissions

Administrators of Autobahn DX should be aware that “Quick Job” operations are run in the context of the current logged on user so rely on the permissions granted to that user and may to process files on remote file systems may make use of either UNC paths or mapped drives visible to that user. Conversely, Jobs in the Job Manager are run by the Autobahn DX windows service, so when accessing remote file systems UNC paths should be used rather than mapped drives. The job will run as the user specified in the “Log On” property page of the service so it may be necessary to change the user ID if required for security purposes.

2.10 File Name Length

Windows has a file name length of 260 characters and a folder name length limit of 248 characters. There are potentially two areas where this could impact Autobahn DX processing.

2.10.1 File Name Length - UNC Paths

If a local file path is at or close to one of the windows limits, it can potentially cause issues. For example this local file

C:\documents\major accounts payable 2010\.....with 260 characters.pdf

When accessed remotely via a UNC, such as the one below will exceed the 260 character limit when Autobahn DX is scanning folders for files to process. This can even affect files that are to be filtered out (e.g. .msg files in the case where *.pdf has been specified as a filter).

\\servername\c\$:\documents\major accounts payable 2010\.....with 260 characters.pdf

The best solution for this problem is to create a share such that the UNC path will not exceed the limit.

For example create a share to *C:\documents\major accounts payable 2010* with a short name such as “dp2” will then allow access via a UNC such as *\\servername\dp2\.....with 260 characters.pdf*

In other words, in Designer the source folder is [\\servername\dp2](#) rather than [\\servername\c\\$:\documents\major accounts payable 2010](#)

2.10.2 File Name Length – Autobahn DX Working Folder Paths

For integrity reasons, Autobahn DX will (by default) copy source files and writes processed files to working folders before copying to the target output folders. The location of the working folders is defined in job manager – for example *C:\Aquaforest\Autobahn DX\work\1008*

As an example, given a file *C:\Accounts\Business Documents 2010\Invoices\.... with 260 characters.pdf* and the source folder defined as *C:\Accounts\Business Documents*

2010\Invoices then the working file will be C:\Aquaforest\Autobahn DX\work\1008\Invoices\.... with 260 characters.pdf which will exceed the limit.

The best solution is to shorten the working folder path via the Designer screen – for example to C:\dw\1008 instead of C:\Aquaforest\Autobahn DX\work\1008

3 INSTALLATION AND LICENSING

3.1 System Requirements

Supported Systems	Operating	Windows 7 (64bit) Windows 8 (64bit) Windows 10 (64bit) Windows Server 2008 (64bit) Windows Server 2012
Disk Space		500 Mb
.Net Framework		3.5 and 4.5.2

3.2 Product Licensing

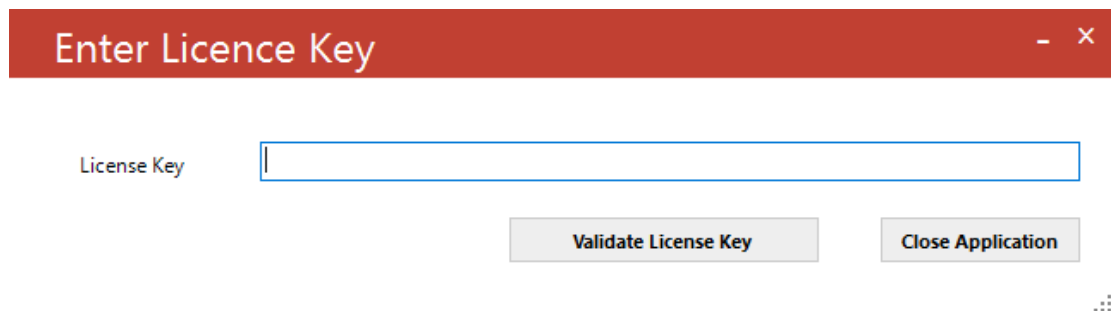
Autobahn DX has four license levels which are described below:

License	Description
Workstation	<p>This license only allows use of the Quick Job tab.</p> <p>To test this license in trial mode select the WORKSTATION radio button from the “Modules & Licensing” tab.</p>
Server	<p>This license allows use of all of the tabs.</p> <p>To test this license in trial mode select the SERVER radio button from the “Modules & Licensing” tab.</p>
Extended OCR	<p>This module is applied on-top of the SERVER license and enables access to the IRIS OCR engine for enhanced recognition.</p> <p>To test this license in trial mode select the SERVER Extended OCR radio button from the “Modules & Licensing” tab.</p> <p>See section 15 for more details.</p>
IHQC	<p>This module is applied to the SERVER + EXTENDED OCR license and enables access to IRIS COMPRESSION.</p> <p>To test this license in trial mode select the SERVER Extended OCR IHQC radio button from the “Modules & Licensing” tab.</p> <p>See section 16 for more details.</p>
Asian Language Support	<p>This module is applied to the SERVER + EXTENDED OCR license and enables Asian Language support.</p> <p>To test this license in trial mode select the SERVER Extended OCR Asian Language radio button from the “Modules & Licensing” tab.</p>

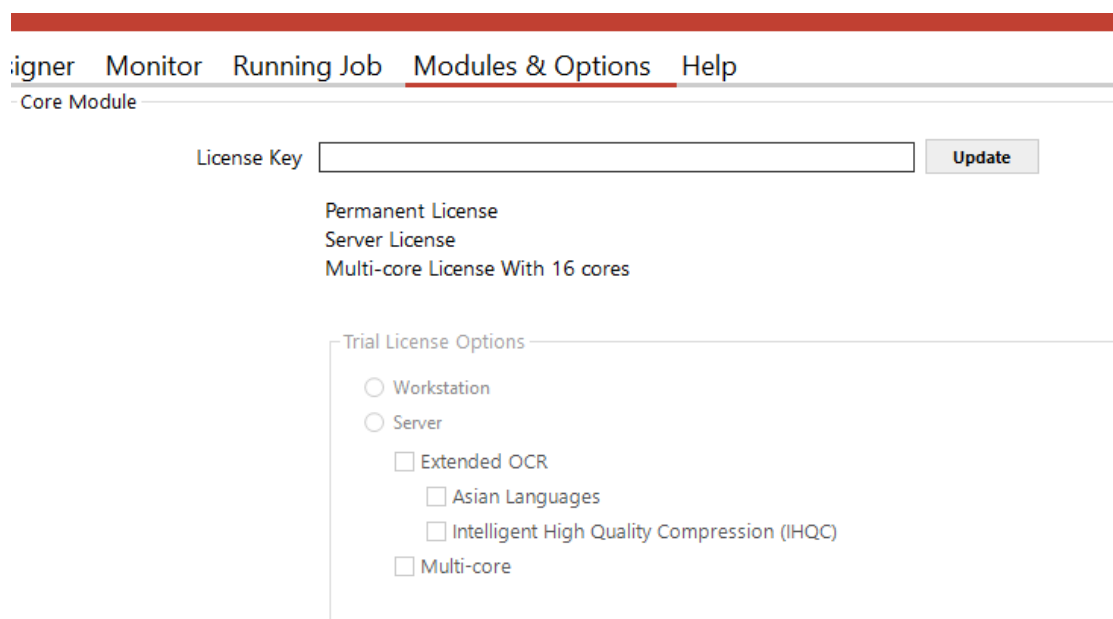
	See section 16 for more details.
Multicore	<p>This module is applied on-top of the SERVER license and enables use of multiple cores when running jobs.</p> <p>To test this license in trial mode select the SERVER Multi-Core radio button from the “Modules & Licensing” tab.</p> <p>See section 17 for more details.</p>

3.3 Entering License Keys

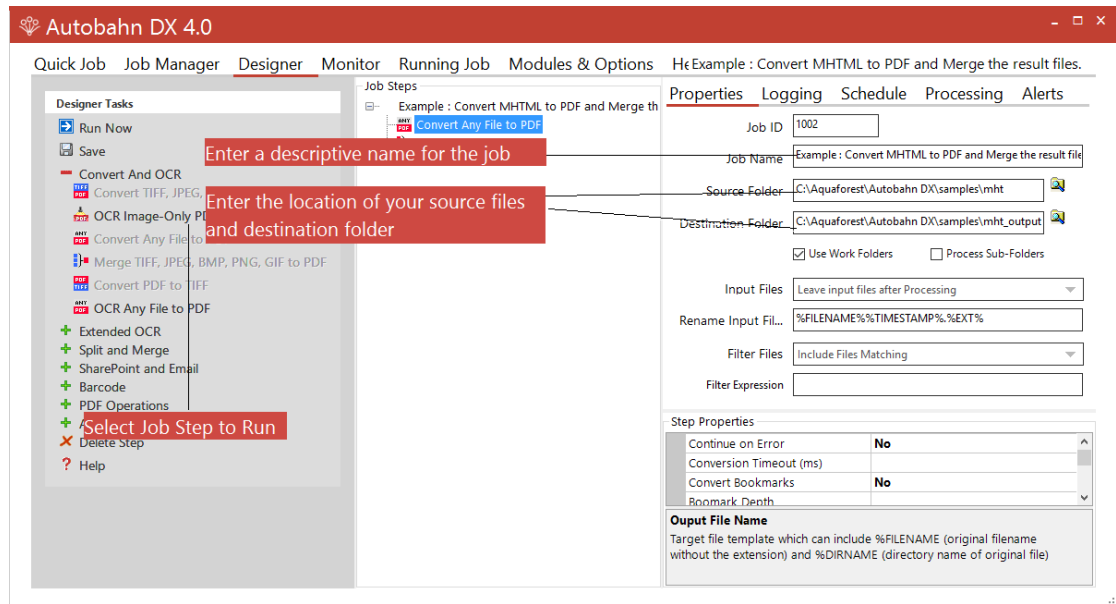
Autobahn DX cannot start without a valid license key, any time you start Autobahn without a valid license key, it shows you the windows below.



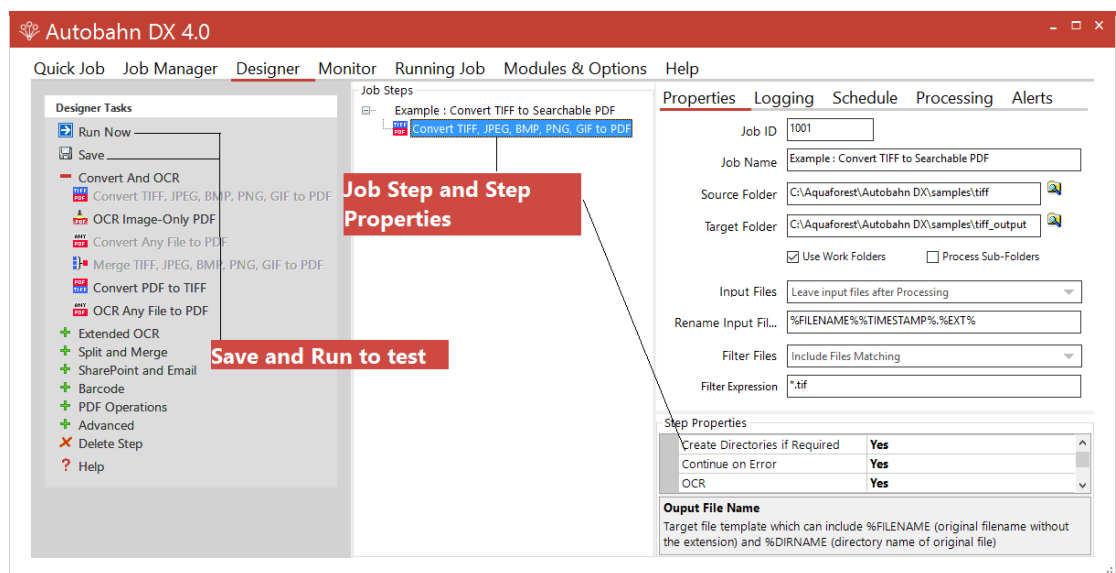
License keys may be entered by using the “Modules & Options” tab.



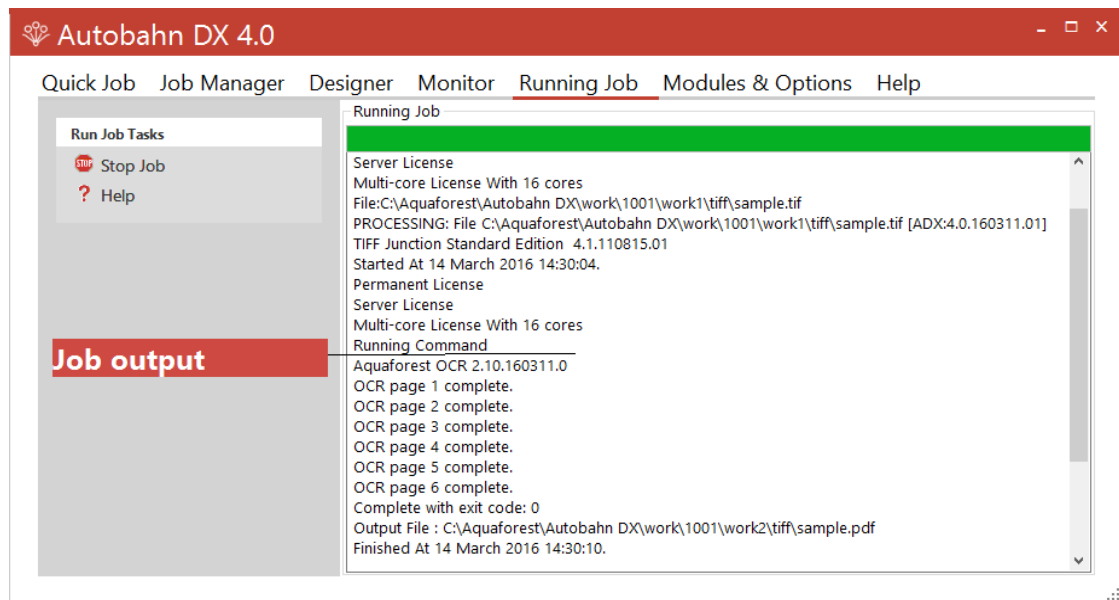
3. The Job Designer Screen



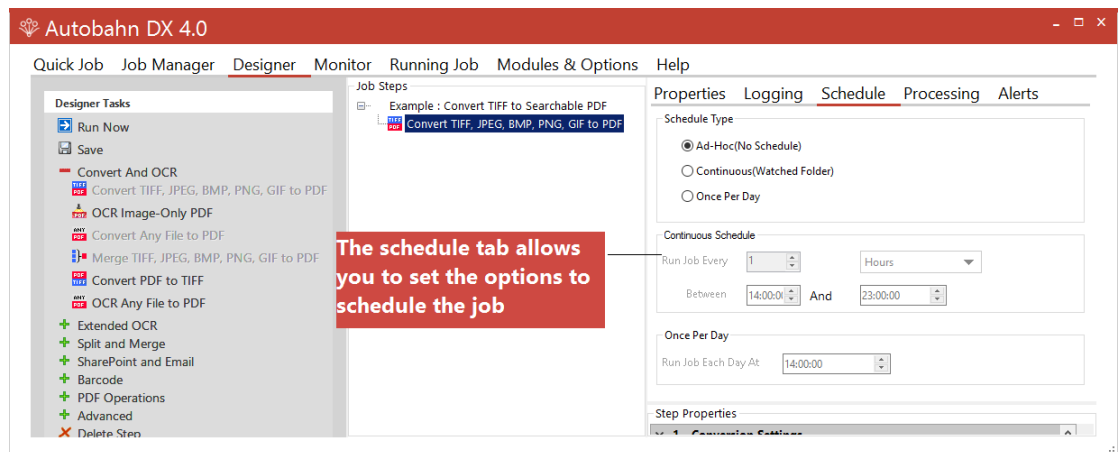
4. Defining a Job



5. Testing the Job Definition



6. Scheduling the Job



5 USING THE QUICK JOB TAB

“Quick Jobs” can be defined and run interactively which provides a convenient method for testing the product’s capabilities and running simple jobs. The job definitions can be saved to the Job Manager for scheduling and further refinement.

The Quick Job Screen

Menu	Item	Action
Run		Runs the job using the current Quick Job definition.
Save to Job Manager		Creates a new job in the Autobahn DX job manager using the current Quick Job definition.
Save to File		Save the current Quick Job definition to an XML file.
Load from File		Loads a Quick Job definition from an XML file.
Show Command Line		Shows the command line equivalent of the current Quick Job definition. [Requires the Server license]

5.1.1 Job Definition Section

Screen Field / Button	Description
Run	Runs the current job. Job output will appear in the "task log section of the screen".
Stop	Halts processing of the currently running job.
Explore Destination	Launches Windows Explorer using the destination as the starting point.
More Options	This launches a set of property sheets which can be used to set properties of the generated PDF files, such as security and metadata values.

Screen Field / Button	Description						
Select Task	<p>This defines which task is to be run and may be one of :</p> <ul style="list-style-type: none"> Convert a TIFF file to PDF OCR an Image-Only PDF File Convert any file to PDF Set PDF Properties Merge TIFF Files Merge TIFF Files to PDF Split a TIFF File Show Information for a TIFF File Split PDF Merge PDF Convert a PDF file to TIFF Extract Text from PDF Convert Any File To Searchable PDF TIFF/PDF Barcode 						
Source	The source file or directory.						
Destination	The location where the generated TIFF or PDF file(s) will be placed. This can be set to be the same as the source location.						
Output File(s)	<p>This defines the template output file name.</p> <table border="1"> <tr> <td>%FILENAME</td><td>Source file name without .pdf</td></tr> <tr> <td>%UNIQUE<i>n</i></td><td>For use with split operations. Unique number starting at 1. If <i>n</i> is supplied, then zero padding to <i>n</i> digits is used. If <i>n</i> is not supplied or is zero, then zero padding is not used.</td></tr> <tr> <td>%DIRNAME</td><td>Source directory name of the directory currently being processed.</td></tr> </table>	%FILENAME	Source file name without .pdf	%UNIQUE <i>n</i>	For use with split operations. Unique number starting at 1. If <i>n</i> is supplied, then zero padding to <i>n</i> digits is used. If <i>n</i> is not supplied or is zero, then zero padding is not used.	%DIRNAME	Source directory name of the directory currently being processed.
%FILENAME	Source file name without .pdf						
%UNIQUE <i>n</i>	For use with split operations. Unique number starting at 1. If <i>n</i> is supplied, then zero padding to <i>n</i> digits is used. If <i>n</i> is not supplied or is zero, then zero padding is not used.						
%DIRNAME	Source directory name of the directory currently being processed.						

	%TIMESTAMP	Timestamp for filename
	%DATESTAMP	Datestamp for filename
	%GUID	GUID for filename
	<i>String</i>	(Any string)
<p>For example, a split operation using %FILENAME-part%UNIQUE6.pdf would give <i>filename.pdf</i> split into <i>filename-part000001.pdf filename-part000002.pdf</i> etc.</p>		

5.1.2 OCR Options Section

Screen Field / Button	Description
Searchable PDF	PDFs generated from TIFF files include searchable hidden text recognised by Autobahn DX's OCR Engine.
OCR to Text File (Professional Edition Only)	Create a separate text file of text recognised by Autobahn DX's OCR Engine.
Other Options (Deskew, Autorotate, Despeckle)	See section 6.2.8 for further explanation of the OCR options.

5.1.3 OCR PDF Options Section

Screen Field / Button	Description
Image Method	<p>This allows control over the method used to extract images from PDF files for OCR processing when using the "OCR an Image-Only PDF". The options are :</p> <ul style="list-style-type: none"> • Auto – TIFF Junction will select the most appropriate method. This will be "Convert to TIFF" for image-only PDFs and "Native" otherwise. • Convert to TIFF – The PDF is rasterized using conversion to PDF. • Native - This method places the OCR'd text directly into a copy of the original PDF rather than creating an entirely new PDF. <p>Note methods other than "Native" actually change the non-image parts of the PDF to image + text.</p> <p>IMPORTANT NOTE: As the "Native" method does not make any changes to the images in the PDF file, it is not compatible with the JBIG2 or MRC compression, PDF/A compliance option. If these features are required then it is recommended that the "Convert to</p>

	TIFF” setting for the PDF OCR image extraction method.
Non-Image PDFs	<p>This allows control over the treatment of non-image PDFs, i.e. PDFs that have some text in them as well as images. The options are :</p> <ul style="list-style-type: none"> • OCR. The document will OCRed using the image method defined by “Image Method” • Raise Error. The task will terminate with an error. If “On Error Continue” is set this then behaves as Skip. This is the default. • Skip. The document will not be processed. • Pass Through. The file will not be processed, but a copy of the document will be made and named as if the processing had occurred.
DPI	Image PDFs are converted to TIFF for OCR processing. This dropdown allows the DPI for the converted TIFF to be specified. If left on “Auto” the DPI will be determined from the original images in the PDF file.
Retain Bookmarks	Bookmarks from the original PDF are copied to the searchable result PDF.
Retain Metadata	Metadata from the original PDF are copied to the searchable result PDF.

5.1.4 PDF to TIFF Options Section

Screen Field / Button	Description
TIFF Compression	For black & white documents “Group 4” should be selected. For color, “LZW” should be used.
TIFF Resolution	This specifies the DPI resolution.

5.1.5 Split Options Section

Screen Field / Button	Description				
Split Type	<i>One of :</i> Split into single pages Split by ranges (See below) Split by repeating ranges (See below)				
Page Ranges	Set of page ranges separated by commas that defines which pages from the original should be extracted. The following types of page ranges are allowed : <table border="1"> <tr> <td>1</td><td>Specifies a single page</td></tr> <tr> <td>1-3</td><td>Specifies a range of pages</td></tr> </table>	1	Specifies a single page	1-3	Specifies a range of pages
1	Specifies a single page				
1-3	Specifies a range of pages				
Repeating Range	Apply the page range to each set of <i>Page Ranges</i> within the document. For example if 2-4 is specified for page ranges, and 4 is specified as the repeating range, then the range is re-applied every 4 pages. Hence the file is split such that the first output file contains pages 2-4 from the original document; the second contains pages 6-8 and so on.				

5.1.6 Other Options Section

Screen Field / Button	Description
Create Directories where required	If checked, when processing a tree, subdirectories will be created in the target directory tree when required.
Continue on Error	When checked, folder and tree processing jobs will continue even if there is an error processing individual files.
PDF/A-1b PDF/A-2b PDF/A-3b	Processes the output PDF file to ensure it is compliant with ISO 19005 / PDF/A-1b, PDF/A-2b or PDF/A-3b, See section 6 for more details.
JBIG2 Compression	If this option is chosen, bitonal images in the output PDF will be compressed using JBIG2 compression rather than the default of Group 4. This will result in smaller files for PDFs with black and white images.
MRC Compression	This enables Mixed Raster Compression which can dramatically reduce the output size of PDFs comprising color scans. Note that this option cannot be used in conjunction with the "Native" Image Method for OCRing PDFs as the Native method does not adjust the images within the PDF.
Advanced Flags	Additional TIFFJunction advanced command line flags may be entered here (see section 3 of the TIFFJunction reference guide in the tj/docs folder)

5.1.7 Barcode Options

Screen Field / Button	Description
Split By Barcode	Choose this option to split the TIFF/PDF file by Barcode
Rename By Barcode	Choose this option to rename the TIFF/PDF file based on Barcode.
Barcode Type	Barcode formats supported.
Split options	Various Options for splitting Files by Barcode <ul style="list-style-type: none">• Barcode on First Page• Barcode on Last Page• Remove Barcode Page
Try Harder	Spend more time to try to find a barcode; optimize for accuracy, not speed. Default is true.
Output File(s) With Barcode	The output file path template where the split files will be saved. <ul style="list-style-type: none">- %VALUE% : Replaced by the barcode value found.- %INDEX% : Replaced by the current split index.- %FILENAME : Replaced by the file name
Output File(s) No Barcode	The renaming template to use for page ranges where no barcodes were identified. Allowed templates: <ul style="list-style-type: none">- %INDEX% ; Replaced by the current split index.- %FILENAME : Replaced by the filename of the source file.
Advanced Flags	This enables advanced PDF Junction and TIFF Junction flags to be used, even if there is no direct equivalent in autobahndx.exe.

5.1.8 Task Log Section

Screen Field / Button	Description
Command	This is the operating system command that is used to run the job. It can be edited after using the "Edit" button, although there is normally no need for this.
Task Output	The output of the job appears here.

5.2 Security Settings

Document Options
×

Security Metadata Document Options PDF Conversion Settings

Source Document Security

Password

Target Document Security

Encryption Strength No Security ▼

Owner Password

User Password

Target Document Permissions

☐ Allow All Permissions

☐ Printing

☐ Copy

☐ Fill

☐ Assembly

☐ Modify Contents

☐ Modify Annotations

☐ Screen Readers

☐ Degraded printing

OK
Cancel

5.2.1 Target Document Security

Option	Description	
User Password	A password that will be required to open the document.	
Owner Password	A password that will be required to change the document permissions.	
Permissions		
	Permission	Description
	Allow All Permissions	All the permissions below.
	Printing	Allow high-quality printing
	Modify Contents	Allow assembly (see below) and other document medications
	Copy	Allow text and graphic copying and extraction
	Modify Annotations	Allow modification of annotations
	Fill	Allow filling of form fields
	Screen Readers	Allow extraction of text and graphics in support of accessibility.
	Assembly	Allow rotation, insertion or deletion of pages.
	Degraded Printing	Allow low-quality printing

5.3 Document Metadata

Document Options

Security

Metadata

Document Options

PDF Conversion Settings

Document Metadata

Author

Creator

Title

Subject

Keywords

OK

Cancel

This screen allows setting metadata to the generated PDF.

5.4 Document Options

Document Options

Security Metadata Document Options PDF Conversion Settings

Display Modes

Page LayoutSingle Page

Page ModeNeither Bookmarks nor Thumbnails Open

Non-Full Screen ModeNeither Bookmarks nor Thumbnails

Settings

☐ Hide Menu Bar

☐ Hide Tool Bar

☐ Hide Window UI

☐ Fit Window

☐ Center Window

Page Settings and Margins

Width

Left

Top

Height

Right

Bottom

Paper Orientation

Default

OK

Cancel

5.4.1 Display Modes

Option	Description
Page Layout	The setting for initial document page display. One of : <ul style="list-style-type: none">• Single Page• Continuous• Continuous Facing (odd pages left)• Continuous Facing (odd pages right)
Page Mode	The setting for initial viewer mode. One of : <ul style="list-style-type: none">• Neither Bookmarks nor Thumbnails Open• Bookmarks Open• Thumbnails Open• Bookmarks & Thumbnails Open• Full Screen
Non-Full Screen Mode	Only applicable where Page Mode=Full Screen. The setting for document page display when exiting Full Screen mode. One of : <ul style="list-style-type: none">• Neither Bookmarks nor Thumbnails Open• Bookmarks Open• Thumbnails Open

5.4.2 Settings

Option	Description
Hide Tool Bar	The viewer's tool bar will be hidden
Hide Menu Bar	The viewer's menu bar will be hidden
Hide Window UI	The viewer's UI elements (scrollbars etc.) will be hidden
Fit Window	The viewer will resize the document's window to fit the size of the first displayed page.
Centre Window	The document window will be positioned in the center of the screen.

5.5 PDF Conversion Settings

Document Options

Security Metadata Document Options PDF Conversion Settings

Conversion Control

Conversion Timeout(Seconds)

Conversion Error Folder

Microsoft Office Conversion Settings

☐ Convert Hyperlinks

☐ Merge PDF Attachment

☐ Print BG Color(IE)

☐ Retain Attachments

☐ Retain Properties

☐ Print All Sheets(Excel)

☐ Convert Bookmarks

☐ Frame Slides

Depth

Zoom (Excel)

Output Type (PP)

Print Scale %(Visio)

Color Type (PP)

Header(IE)

Handout Order (PP)

Footer(IE)

Print Graphics (Pub)

Image and Font Conversion Settings

Image Compression

☐ Embed Fonts as Type 0

☐ Image Downsizing

Font Embedding

Image JPEG Quality(5-100)

Font Substitution

DownSize Resolution(DPI)

OK

Cancel

5.5.1 Conversion Control

Option	Description
Conversion Timeout	Set timeouts for converting files in seconds.
Conversion Error Folder	Folder where all the error files will be copied to.

5.5.2 Microsoft Office Conversion Settings

Option	Description
Convert Bookmarks	For MS Word, convert bookmarks
Depth	<p>This property will take effect only when the ConvertBookmarks property is set to True. Numbers defining bookmark levels must be equal to or larger than one. Word style names must not repeat in the string. The string must not start or end with the delimiter. When this property is empty, the default style mapping (Heading one through nine will be mapped to level one through nine) will be used. Therefore, empty string is functionally equivalent to:</p> <p>Heading 1 1 Heading 2 2 Heading 3 3 Heading 4 4 Heading 5 5 Heading 6 6 Heading 7 7 Heading 8 8 Heading 9 9</p> <p>Note: If you use non-English version of Microsoft Word, then you may need to replace the word "Heading" with its localized version.</p>
Convert Hyperlinks	Sets the flag to indicate whether to convert Word hyperlinks to PDF hyperlinks.
Print All Sheets	The flag that indicates whether to print all Excel worksheets or not.
Print BG Color	For files printed via IE Sets the flag that indicates whether to print background color or not when printing.
Print Scale	For Visio files, sets the print scale
Header	This property modifies Internet Explorer's header setting.
Footer	This property modifies Internet Explorer's footer setting.
Zoom	Sets printing zoom of the worksheet. The allowed value range is from 10 to 400.
FitToPagesWide	Sets number of pages wide the worksheet will be scaled to. This property is ignored if the Zoom property is set.
FitToPagesTall	Sets number of pages tall the worksheet will be scaled to.

	This property is ignored if the Zoom property is set.
Merge PDF Attachments	Set this flag to true if you want if you want converted pdf attachments to merged to the output pdf file. Otherwise the converted files will be merged back to the pdf.
Retain Original Attachment	Set this flag to true if you want the original attachments to be retained in the pdf file after they are merged. This flag only gets picked up if the MergeAttachments flag above is used.
Retain Properties	Set this flag if you want the MS Office properties to be transferred to the target pdf document.
Handout Order	Sets the handout order, this flag only applies to Power Point jobs. The possible values are: <ul style="list-style-type: none"> • Vertical First • Horizontal First
Output Type	Sets the output type, it only works with the PowerPoint files. The possible values are: <ul style="list-style-type: none"> • Slides • Build slides • Two slides handouts • Three slides handouts • Four slides handouts • Six slides handouts • Nine slides handouts • Notes • Outline
Print Graphics	Sets the graphics setting for printing. <ul style="list-style-type: none"> • Print Full Resolution • Print Low Resolution • Print Graphics

5.5.3 Image and Font Conversion Settings

Option	Description
Font Embedding	The option PRN_FONT_EMBED_FULLSET (embedding full set of font) will cause significant increase in PDF file size, especially for CJK font, and therefore not recommended. If you need to embed font, PRN_FONT_EMBED_SUBSET (embed subset of font) will be a better choice.
Font Substitution	For the PRN_FONT_SUBST_TABLE (use font substitution table) option, you need to configure the substitution table. The table is stored under the "Device Setting" section of the printer driver properties (can be accessed from Control Panel).
Embed Fonts as Type 0	This option is recommended if you have non-standard fonts like barcode font.
Top Margin	Sets top margin.
Bottom	Sets bottom margin.
Left	Sets left margin.
Right	Sets right margin.
Width	Sets a custom page width.
Height	Sets a custom page height.
Paper Orientation	Sets paper orientation e.g. PRN_PAPER_ORIENT_LANDSCAPE
Image Compression	If you want a lossless image compression, use PRN_IMAGE_COMPRESS_ZIP (ZIP compression).
Image Downsizing	If this property is set to True, then the resolution of images are reduced to the DPI value specified in the ImageDownsizeResolution property.
Image JPEG Quality	The allowed value range is from 5 to 100 with 100 being the highest quality.
Downsize Resolution	If the ImageDownsizing property is set to True, then the resolution of images are reduced to the DPI value specified in this property.

5.6 Advanced Flags

The Advanced Flags field allows entry of certain options that cannot be entered via the GUI.

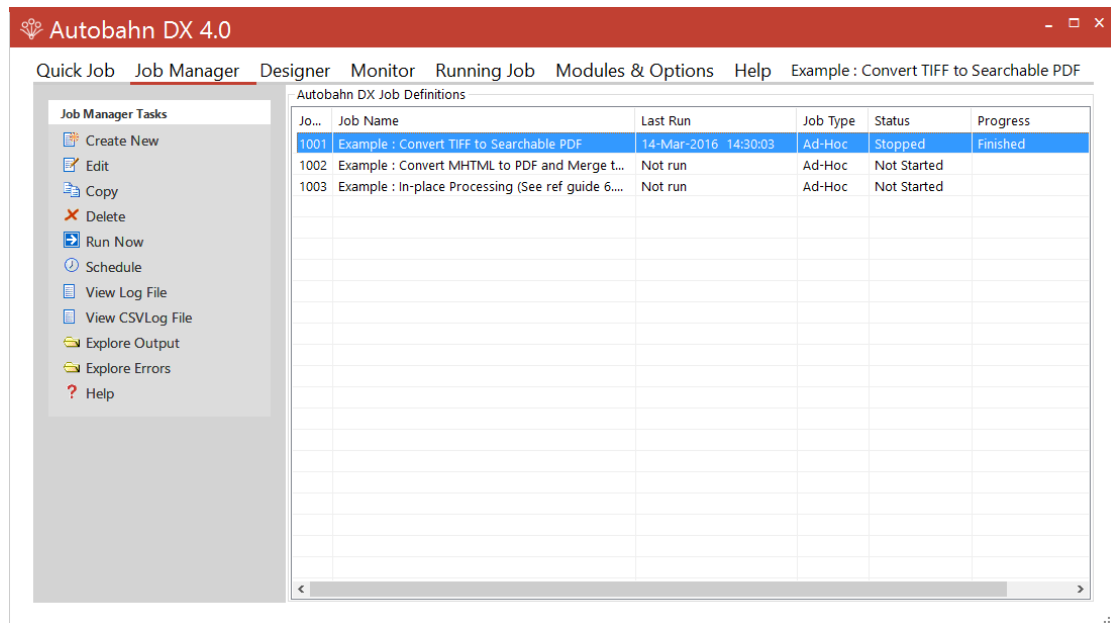
Option	Description
-B 100	<p>Blank Page Removal</p> <p>This option can be used when converting TIFF files to Searchable PDFs. A value should be provided which specifies the pixel threshold to be used to determine whether a page is blank or not. If a page is deemed to be blank then it is omitted from the output file. A suggested value is 100 i.e. using the new –B advanced flag : -B 100</p>
-D	<p>Dot Matrix Processing</p> <p>This option will significantly improve recognition for dot matrix documents but should not be used when processing other document types as it will have a negative impact on non-dot matrix documents.</p>
-0 [zero]	<p>Custom Despeckle</p> <p>When used in combination with the despeckle option, this has the effect of de-speckling the page for OCR processing, but the image retained in the final file is not de-speckled.</p>
-q	<p>Custom Quantization</p> <p>This command line option should generally only be used under guidance from technical support. It can control the way that color images are processed and force binarization with a particular threshold. (For example -q 127).</p>

6 THE AUTOBAHN DX ADMINISTRATION TOOL

The Autobahn administration tool is a Windows Forms application designed to enable system administrators to be able to create and configure Job Definitions that control document processing. A number of example Job Definitions are included with the product which can be tailored to meet a user's precise requirements.

6.1 Job Manager

This section of the application displays a list of all current Job Definitions and the set of operations to be performed shown in the menu table below.

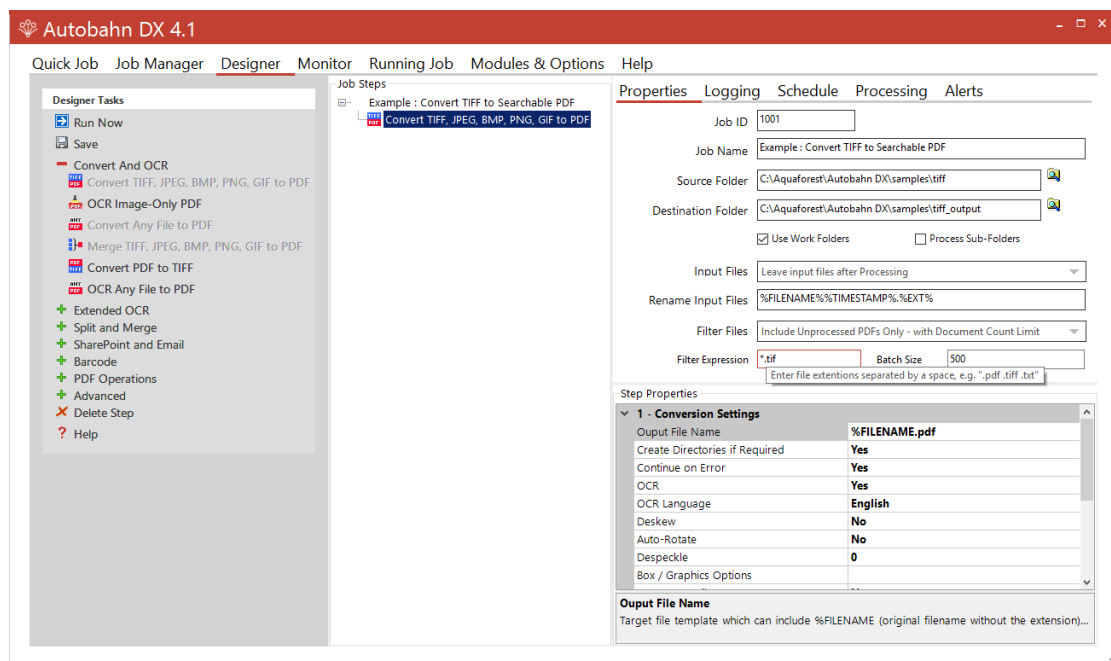


Menu	Item	Action
Create New		Creates a new, skeleton job definition from jobtmpl.xml and then switches display to the Job Designer.
Edit		Switches the view to Edit on the selected Job.
Copy		Creates a copy of the selected job. The job name will be Job %JOBID% (Copy of %JOBNAME%)
Delete		Deletes the selected job definition after confirmation.
Run Now		Executes the selected job via the interface in the Run tab window.
Schedule		Switches the view to the schedule window for the selected job.

View Log File	Displays the most recent log file for the job.
Explore Output	Launches windows explorer on the job output folder.

6.2 Job Designer

This allows definition and editing of a job definition, using a tree-list type model coupled with a Visual Studio – style property list. Each step type will have its own icon. Drag and drop can be used to allow reordering of steps.



6.2.1 Menu Items

Menu	Item	Action
	Save	Validates the current job and if valid, saves the current job definition to %JOBID%.xml in the %JOBDEFDIR% directory.
	Add Step (Expands)	Expands to show a list of steps that are valid to be placed after the currently selected tree node (or as the first node if none is currently highlighted). Which steps are valid is determined by matching the output type of the previous step with the valid input type of the possible steps.
	Delete Step	Deletes the currently selected step node.
	Run Now	Performs a save (as above) and then executes the job. The output is displayed in the Run tab screen.
	Return to Job Manager	Returns to the job manager with the current job selected.

--	--

6.2.2 Fields

Menu	Item	Description
Job ID		A sequential Job ID is allocated for the Job by Autobahn DX. This cannot be changed.
Job Name		A descriptive title for the job.
Source Folder		The folder containing the documents to be processed.
Target Folder		The folder where the processed files will be placed if “Move input files to target folder after processing” is chosen.
Process Sub-Folders		If checked, all sub-folders will be recursively processed.
Always Use Work Folders		By default Autobahn DX processes job steps by using a separate folder for each step. Hence files from the source folder are copied to a work folder, processed for each step to another work folder and then finally to the target folder. This approach ensures integrity (e.g. correctly processing files that are added to the source folder after a job has started) but can slow down large jobs.
Input files		<p>This option determines what happens to the input files once processing has been completed. The options are :</p> <p><i>Leave input files after processing:</i> Files are left in the Source Folder.</p> <p><i>Move to archive after processing:</i> Files are moved to the Archive Folder.</p> <p><i>Copy to archive after processing:</i> Files are copied to the Archive Folder.</p> <p><i>Move input files to target folder after processing:</i> Input files are placed in the same folder as the output files.</p> <p><i>Delete input files after successful processing:</i> Input files are deleted.</p>
Input renaming	Files	<p>This determines how input files will be renamed when moved to the Target or Archive folder. The default is :</p> <p>%FILENAME%%TIMESTAMP%.%EXT%</p>

Filter Files	<table><tr><th>Filter Files Option</th><th>Description</th></tr><tr><td>Include Files Matching</td><td>Only files matching the Filter Expression are included.</td></tr><tr><td>Exclude</td><td>Files matching the Filter Expression are excluded.</td></tr><tr><td>Include with Document Count Limit</td><td>For example “*.pdf; 3000” would limit the job to 3000 PDF files.</td></tr><tr><td>Include Unprocessed PDFs Only</td><td><p>This would limit files selected to PDFs that have not been OCR'd.</p><p>A file is deemed to have been OCR'd if either</p><ul style="list-style-type: none">(a) It has a custom metadata tag “AQUAFORESTOCR”(b) It has one image per page and only has “invisible” text.<p>This should be used in conjunction with a “Non-Image PDF” setting of “Rasterize and OCR” to ensure that all PDF files are processed.</p></td></tr><tr><td>Include Unprocessed PDFs Only – with Document Count Limit</td><td>As above, but limited to the number of files specified in the filter.</td></tr></table>	Filter Files Option	Description	Include Files Matching	Only files matching the Filter Expression are included.	Exclude	Files matching the Filter Expression are excluded.	Include with Document Count Limit	For example “*.pdf; 3000” would limit the job to 3000 PDF files.	Include Unprocessed PDFs Only	<p>This would limit files selected to PDFs that have not been OCR'd.</p> <p>A file is deemed to have been OCR'd if either</p> <ul style="list-style-type: none">(a) It has a custom metadata tag “AQUAFORESTOCR”(b) It has one image per page and only has “invisible” text. <p>This should be used in conjunction with a “Non-Image PDF” setting of “Rasterize and OCR” to ensure that all PDF files are processed.</p>	Include Unprocessed PDFs Only – with Document Count Limit	As above, but limited to the number of files specified in the filter.
	Filter Files Option	Description											
	Include Files Matching	Only files matching the Filter Expression are included.											
	Exclude	Files matching the Filter Expression are excluded.											
	Include with Document Count Limit	For example “*.pdf; 3000” would limit the job to 3000 PDF files.											
	Include Unprocessed PDFs Only	<p>This would limit files selected to PDFs that have not been OCR'd.</p> <p>A file is deemed to have been OCR'd if either</p> <ul style="list-style-type: none">(a) It has a custom metadata tag “AQUAFORESTOCR”(b) It has one image per page and only has “invisible” text. <p>This should be used in conjunction with a “Non-Image PDF” setting of “Rasterize and OCR” to ensure that all PDF files are processed.</p>											
	Include Unprocessed PDFs Only – with Document Count Limit	As above, but limited to the number of files specified in the filter.											
N.B.: Work Folders must be used to enable use of filters.													
Filter Expression	<p>One or more search options used to determine the files in the source folder that should be processed. Multiple expressions may be used, separated by spaces.</p> <p>Examples :</p> <p>*.pdf *.doc *.ppt *.xls</p>												
Batch Size	Limits the number of documents to be processed to the given size. To use this feature, you must use a “Filter File Option” with “Document Count Limit”.												
Log File	Path of the job log file. This will include %DATESTAMP%, which is the date of the day the job started. A new log file will be created for each day.												

CSV Log File	<p>Path of the job log file. This will include %DATESTAMP%, which is the date of the day the job started. A new csv file will be created for each day. The columns in the CSV file are :</p> <ul style="list-style-type: none"> • Job Start – Time Job Started • Source Files – Full path to the source file • Target File – Full path to the target file • Job Stopped – Time Job Finished • Success – True or False; Files that could not be processed will have a value of False.
Retention Period	<p>This is an integer value representing the number of days the log file will be kept for before being deleted.</p> <p>Leaving it blank or setting it to a number less than one will keep the log files indefinitely.</p>
Skip Long File Names	<p>Check this box to make Autobahn DX skip long filename, if this box is not checked, Autobahn DX will throw an error if it encounters one of these files.</p>
Skip Folders That Autobahn Can't Access	<p>Check this box to make Autobahn DX Folders it has no permissions to access, if this box is not checked, Autobahn DX will throw an error if it encounters one of these folders.</p>
Archive Folder	<p>The folder where the processed files will be placed if "Move to archive after processing." is chosen.</p>
Work Folder	<p>The folder where files will be temporarily stored during conversion and processing.</p>
Error Folder	<p>Source documents that have errors during processing will be placed in the specified folder.</p>
Temp Folder	<p>Some job steps can require a significant amount of temporary storage, particularly those steps involving OCR. This folder defines the location of the temporary space.</p>
Trigger File	<p>Name and path of the trigger file.</p>

6.2.3 Job Scheduling

To use the Job Schedule, you will need to click the Schedule tab under the Designer Tab.

The screenshot shows a software interface with five tabs: Properties, Logging, Schedule, Processing, and Alerts. The 'Schedule' tab is selected and underlined. Below the tabs, there are three sections for scheduling configuration:

- Schedule Type:** Contains three radio buttons: 'Ad-Hoc(No Schedule)', 'Continuous(Watched Folder)' (which is selected), and 'Once Per Day'.
- Continuous Schedule:** Contains a 'Run Job Every' field with a value of '1' and a unit dropdown menu set to 'Hours'. Below this is a checkbox labeled 'Run Continuously' which is checked, followed by a 'Between' time range from '00:00:01' to '23:55:00'.
- Once Per Day:** Contains a 'Run Job Each Day At' field with a time value of '13:00:00'.

The product supports three types of scheduling which are implemented via the Autobahn DX service:

6.2.3.1 Ad-Hoc

This means that the job does not have any fixed schedule, but may be explicitly run via the management GUI or via one of the API methods.

6.2.3.2 Watched Folder / Continuous Scheduling

This allows the job to be scheduled to run periodically between a start time and end time each day. The periods may be seconds, minutes or hours. For example, a job may be specified to run every 30 seconds between 9:00 and 17:00.

If you check the “Run Continuously” checkbox, the job will run for 24 hours a day. This option is the default for all continuous jobs.

6.2.3.3 Daily Scheduling

This allows the job to be scheduled to run at a specified time each day.

6.2.4 Alerts

This allows to send Emails to your mail box when the job is successful or fails, to get to the Alerts tab, you will need to click the Alerts tab under the Designer Tab.

Properties **Logging** **Schedule** **Processing** **Alerts**

☐ Send Email on Error ☒ Stop Processing on Error

From Email Address

To Email Address

Email Title

Alert : Error Processing Autobahn Job %JOBNAME%(#%JOB

Email Message

Further processing of this job has been suspended.
Please see %LOGFILE%.

Test Email

Menu	Item	Action
	Save	Saves the schedule for the current job
	Stop Processing on Error	If checked, the job will stop if it returns an error, and will not run again until the error is cleared from the Monitor screen.
	Send Email on Error	If checked, Autobahn DX will send an email if an error occurs with a job. The email server configuration should be setup on the “options” screen – see section 6.5 for more information.
	From Email Address	The “from” email address that will be used for the message.
	To Email Address	The email address that the message will be sent to.
	Email Title	The title of the email.
	Email Message	The body of the email.

6.2.5 Workflow Processing versus In-Place Processing

By “in-place” processing, we generally mean processing PDF documents that have already been added to a document repository or system and need to be turned into searchable PDFs *in-place*. By contrast “workflow” processing is where documents pass through Autobahn DX on their way into a document repository via watched folders.

6.2.6 Example In-Place Job Setup

The job shown below will convert PDFs under the tree “C:\Aquaforest\Autobahn DX\samples\pdf” to searchable PDFs, processing up to 1,000 files each time the job is run. Archive copies of the original files are placed in “C:\Aquaforest\Autobahn DX\work\Archive\1003”.

Job Steps

Example : In-place Processing (See ref guide 6.2)

OCR Image-Only PDF

The Source and Target folders should be the same

Subfolders should be processed

For audit purposes, the original files should be copied to an Archive folder

To avoid re-processing and to limit the number of files to be processed in one run

This limits the files to be converted to 5 unprocessed PDF files

The output file is configured to replace the original non searchable pdf file

Properties | Logging | Schedule | Processing | Alerts

Job ID: 1003

Job Name: Example : In-place Processing (See ref guide 6.2.3 and 6.2.4)

Source Folder: C:\Aquaforest\Autobahn DX\samples\pdf

Target Folder: C:\Aquaforest\Autobahn DX\samples\pdf

☒ Use Work Folders ☒ Process Sub-Folders

Input Files: Copy to Archive after Processing

Rename Input Files: %FILENAME%TIMESTAMP%EXT%

Filter Files: Include Unprocessed PDFs Only - with Document Count Limit

Filter Expression: *.PDF; 5

Step Properties

1 - Conversion Settings

Output File Name: %FILENAME.pdf

Create Directories if Required: Yes

Continue on Error: Yes

OCR: Yes

OCR Language: English

Output File Name

Target file template which can include %FILENAME (original filename without the extension) and %DIRNAME (directory name of original file)

*This gives an upper limit on the number of documents that will be processed in a single batch run. Depending upon the document store and the schedule a larger or smaller figure may be appropriate.

6.2.7 Step Types

Step	Type	Description	Underlying Product
Convert TIFF to PDF		Converts a TIFF file to PDF. The TIFF compression must be one of the support formats : Group 4, Group 3, LZW, JPEG (type 6), RLE, Uncompressed (bitonal). Depending upon the Step Type Properties chosen, the PDF file may be searchable or image-only, and a separate text or HTML file may be produced from the OCR process.	TIFF Junction
OCR PDF	Image-Only	Creates a searchable PDF file from the set of images from an image-only PDF file. Depending upon the Step Type Properties chosen, a separate text or HTML file may be produced from the OCR process.	TIFF Junction
Convert document to PDF	any	This converts any printable document to PDF, such as Microsoft Word, Excel, PowerPoint, HTML, etc. subject to the native application being available on the server.	PDF Junction
Merge TIFFs to PDF		This merges a folder of TIFF files together to produce a PDF file.	TIFF Junction
Set PDF Properties		This is used to set PDF Metadata properties (such as Author, Title, etc.), Security settings and Document Display properties.	PDF Junction
Custom Step		This can be used to support a custom scripted step in the process. See section 7 for more details.	-
Merge PDF		Merges a folder of PDF files into a single file.	PDF Junction
Split PDF		Splits each input PDF file into a set of files, either a single page per file or by page ranges.	PDF Junction
Merge TIFF		Merges a folder of TIFF files into a single file.	TIFF Junction
Split TIFF		Splits each input TIFF file into a set of files, either a single page per file or by page ranges.	TIFF Junction

Convert PDF to TIFF	Rasterizes a PDF file, converting into a multi-page TIFF file.	PDF Junction
Extract Text from PDF	Extracts the raw text from a searchable PDF. [NB this does not perform an OCR process, it just extracts the existing text from the PDF file.]	PDF Junction
Read Mailbox	This reads the specified mailbox using IMAP4 and extracts attachments for processing. This step should be followed by a regular processing step (e.g. Convert Any Document to PDF) and optionally followed by Send Document.	-
Send Document	This processes a folder of files resulting from conversion after a Read Mailbox step. It will email the converted files back to the users who sent the originals.	-
Optimize PDF	This allows creation of Web Optimized (Linearize) PDFs.	
SharePoint Download	This step downloads documents from the specified SharePoint document library ready for processing	
SharePoint Upload	This step uploads documents to the specified SharePoint document library.	
Compress Image PDF	This step uses MRC compression to Compress PDF files.	.
Extended Convert TIFF to PDF	This is similar to the "Merge TIFF to PDF" step except it uses the IRIS OCR Engine.	
Extended Merge TIFF to PDF	This is similar to the "Convert TIFF to PDF" step except it uses the IRIS OCR Engine.	
Extended OCR Image PDF	This is similar to the "OCR Image PDF" step except it uses the IRIS OCR Engine.	
OCR Any File To PDF	This step attempts to convert all files to searchable PDFs.	
Barcode TIFF/PDF	This step can detect barcodes in TIFF/PDF files and either Split/Rename the file based on the barcodes detected.	Both

High Availability	The high availability step in Autobahn DX is designed to utilise two instances of the product running on separate hosts.	
Kingfisher Job	This step is meant to work with Kingfisher, you can set a kingfisher job up in kingfisher and add it as a step in Autobahn DX, see section 20 for more details.	

6.2.7.1 Convert TIFF to PDF

Parameter	Notes
Output File Name	Target file template which can include %FILENAME (original filename without the extension) and %DIRNAME (directory name of original file)
Create Directories if Required	Force creation of any output directories if they do not already exist.
OCR Options	Choose “No OCR” to generate an image-only PDF. Choose “OCR” to generate searchable PDF and/or text files.
Continue on Error	Continue processing TIFF files after an error occurs.
Password Files	This option specifies what Autobahn does when it encounters a password protected PDF file. <ul style="list-style-type: none"> • Take no action. • Move to Error Folder • Copy to Error Folder
Maximum Cores	This specifies the number parallel files you want to be processed at a given time. Note: You need the multi core license for this.
OCR Language	Select the language the original file is written in. This will determine the dictionary that is used.
Deskew	Straighten the image.
Auto-Rotate	Automatically rotate pages so that text flows left to right.
Despeckle	Remove specks below the specified pixel size from the image.
OCR to Text File	Choose “Yes” to Generate text Output

Output File	<ul style="list-style-type: none"> • Plain Text (txt). • Plain Text (txt) No PDF • MS Word (rtf) • HTML
Advanced Flags	Command line flags to be passed through to the underlying executable.
PDF/A1-b PDF/A2-b PDF/A3-b	Select the output PDF/A compliant version you would like the output PDF to be.
JBIG2 Compression	This option will compress bitonal images in generated PDFs using JBIG2 compression rather than the default Group 4 compression scheme. This will result in smaller PDF file sizes, at a cost of increasing processing time.
Box/Graphics Options	<p>By default, if an area of the document is identified as a graphic area then no OCR processing is run on that area. However, certain documents may include areas or boxes that are identified as “graphic” or “picture” areas but that actually do contain useful text.</p> <p>To ensure that the OCR engine can be forced to process such areas there are two options :</p> <p><i>“Treat all Graphics Areas as Text”</i>. This option will ensure the entire document is processed as text.</p> <p><i>“Remove Box Lines in OCR Processing”</i>. This option is ideal for forms where sometimes boxes around text can cause an area to be identified as graphics. This option removes boxes from the temporary copy of the imaged used by the OCR engine. It does not remove boxes from the final image. Technically, this option removes connected elements with a minimum area (by default 100 pixels).</p>
Line Removal in OCR Processing	This removes lines and boxes during OCR processing to improve recognition – particularly in cases where characters “touch” lines.
MRC	This enables Mixed Raster Compression which can dramatically reduce the output size of PDFs comprising Color scans.
Stamp Name	The name of one of the stamps configured in “tj\stamps\stamps.txt” See section 6.2.9 for full details
Stamp Value	See section 6.2.9 for full details

6.2.7.2 OCR Image-Only PDF

Parameter	Notes
Output File Name	Target file template which can include %FILENAME (original filename without the extension) and %DIRNAME (directory name of original file)
Create Directories if Required	Force creation of any output directories if they do not already exist.
Continue on Error	Continue processing TIFF files after an error occurs.
Over Write Existing	Over Writes the target document if it exists.
PDF/A1-b PDF/A2-b PDF/A3-b	Select the PDF/A compliant version you would like your output file to be
Password Files	This option specifies what Autobahn does when it encounters a password protected PDF file. <ul style="list-style-type: none"> • Take no action. • Move to Error Folder • Copy to Error Folder
Maximum Cores	This specifies the number parallel files you want to be processed at a given time. Note: You need the multi core license for this.
OCR Language	Select the language the original file is written in. This will determine the dictionary that is used.
Deskew	Straighten the image.
Auto-Rotate	Automatically rotate pages so that text flows left to right.
Despeckle	Remove specks below the specified pixel size from the image.
OCR to Text File	Choose "Yes" to Generate text Output
Output File	<ul style="list-style-type: none"> • Plain Text (txt). • Plain Text (txt) No PDF • MS Word (rtf) • HTML
Advanced Flags	Command line flags to be passed through to the underlying executable.

Retain Metadata	Copy metadata from the source PDF to the Searchable result PDF.
Retain Bookmarks.	Copy bookmarks from the source PDF to the Searchable result PDF
Extract PDF Images Via	Choose the method for PDF image extraction. <ul style="list-style-type: none"> • Auto (default) • Native • Convert to TIFF
TIFF Compression	Sets the Compression for the TIFF file used if the “Convert To TIFF” Option above is used. <ul style="list-style-type: none"> • Auto (Selects Group 4 if the page is Black AND White else it uses LZW Compression) • Group 4 (Black and White) • LZW (Colored)
JBIG2 Compression	This option will compress bitonal images in generated PDFs using JBIG2 compression rather than the default Group 4 compression scheme. This will result in smaller PDF file sizes, at a cost of increasing processing time.
MRC Compression	Applies Mixed Raster Compression which can drastically reduce the size of PDF documents.
Non-Image PDFs	This defines how non-image PDFs should be treated. The options are : <ul style="list-style-type: none"> • Raise Error (default) • Rasterize and OCR • Skip • Pass Through
DPI	When OCRing a PDF, the PDF is rasterized to produce a TIFF file which is then OCRed. By default the TIFF image resolution is determined from the images embedded in the source PDF but this flag can be used to override default processing and specify the DPI of the TIFF that will be generated.
Box/Graphics Processing	<p>By default, if an area of the document is identified as a graphic area then no OCR processing is run on that area. However, certain documents may include areas or boxes that are identified as “graphic” or “picture” areas but that actually do contain useful text.</p> <p>To ensure that the OCR engine can be forced to process such areas there are two options :</p> <p><i>“Treat all Graphics Areas as Text”.</i> This option will ensure the entire document is processed as text.</p> <p><i>“Remove Box Lines in OCR Processing”.</i> This option is ideal for forms where sometimes boxes around text can cause an area to be identified as graphics. This option removes boxes from the temporary copy of the imaged used by the OCR engine. It does not remove boxes from the final image. Technically, this option</p>

	removes connected elements with a minimum area (by default 100 pixels).
Line Removal in OCR Processing	This removes lines and boxes during OCR processing to improve recognition – particularly in cases where characters “touch” lines.
MRC	This enables Mixed Raster Compression which can dramatically reduce the output size of PDFs comprising color scans. Note that this option cannot be used in conjunction with the “Native” Image Method for OCRing PDFs as the Native method does not adjust the images within the PDF.
Stamp Name	The name of one of the stamps configured in “tj\stamps\stamps.txt” See section 6.2.23 for full details
Stamp Value	See section 6.2.23 for full details

6.2.7.3 Convert Any File to PDF

Parameter	Notes
Output File Name	Target file template which can include %FILENAME (original filename without the extension) and %DIRNAME (directory name of original file)
Continue on Error	Continue processing files after an error occurs.
Conversion Timeout (ms)	Limits the amount of time in milliseconds that can be spent on a conversion. A value of zero means wait indefinitely.
Convert Bookmarks	For MS Word, convert bookmarks
Depth	<p>This property will take effect only when the ConvertBookmarks property is set to True. Numbers defining bookmark levels must be equal to or larger than one. Word style names must not repeat in the string. The string must not start or end with the delimiter. When this property is empty, the default style mapping (Heading one through nine will be mapped to level one through nine) will be used. Therefore, empty string is functionally equivalent to:</p> <p>Heading 1 1 Heading 2 2 Heading 3 3 Heading 4 4 Heading 5 5 Heading 6 6 Heading 7 7 Heading 8 8 Heading 9 9</p> <p>Note: If you use non-English version of Microsoft Word,</p>

	then you may need to replace the word "Heading" with its localized version.
Convert Hyperlinks	Sets the flag to indicate whether to convert Word hyperlinks to PDF hyperlinks.
Print All Sheets	The flag that indicates whether to print all Excel worksheets or not.
Print BG Color	For files printed via IE Sets the flag that indicates whether to print background color or not when printing.
Print Scale	For Visio files, sets the print scale
Header	This property modifies Internet Explorer's header setting.
Footer	This property modifies Internet Explorer's footer setting.
Zoom	Sets printing zoom of the worksheet. The allowed value range is from 10 to 400.
FitToPagesWide	Sets number of pages wide the worksheet will be scaled to. This property is ignored if the Zoom property is set.
FitToPagesTall	Sets number of pages tall the worksheet will be scaled to. This property is ignored if the Zoom property is set.
Merge PDF Attachments	Set this flag to true if you want if you want converted pdf attachments to merged to the output pdf file. Otherwise the converted files will be merged back to the pdf.
Retain Original Attachment	Set this flag to true if you want the original attachments to be retained in the pdf file after they are merged. This flag only gets picked up if the MergeAttachments flag above is used.
Retain Properties	Set this flag if you want the MS Office properties to be transferred to the target pdf document.
Handout Order	Sets the handout order, this flag only applies to PowerPoint jobs. The possible values are: <ul style="list-style-type: none"> • Vertical First • Horizontal First
Output Type	Sets the output type, it only works with the PowerPoint files. The possible values are:

	<ul style="list-style-type: none"> • Slides • Build slides • Two slides handouts • Three slides handouts • Four slides handouts • Six slides handouts • Nine slides handouts • Notes • Outline
Print Graphics	<p>Sets the graphics setting for printing.</p> <ul style="list-style-type: none"> • Print Full Resolution • Print Low Resolution • Print Graphics
Convert Bookmarks	For MS Word, convert bookmarks
Depth	<p>This property will take effect only when the ConvertBookmarks property is set to True. Numbers defining bookmark levels must be equal to or larger than one. Word style names must not repeat in the string. The string must not start or end with the delimiter. When this property is empty, the default style mapping (Heading one through nine will be mapped to level one through nine) will be used. Therefore, empty string is functionally equivalent to:</p> <p>Heading 1 1 Heading 2 2 Heading 3 3 Heading 4 4 Heading 5 5 Heading 6 6 Heading 7 7 Heading 8 8 Heading 9 9</p> <p>Note: If you use non-English version of Microsoft Word, then you may need to replace the word "Heading" with its localized version.</p>
Convert Hyperlinks	Sets the flag to indicate whether to convert Word hyperlinks to PDF hyperlinks.
Print All Sheets	The flag that indicates whether to print all Excel worksheets or not.
Print BG Color	For files printed via IE Sets the flag that indicates whether to print background color or not when printing.
Print Scale	For Visio files, sets the print scale
Header	This property modifies Internet Explorer's header setting.

Footer	This property modifies Internet Explorer's footer setting.
Zoom	Sets printing zoom of the worksheet. The allowed value range is from 10 to 400.
FitToPagesWide	Sets number of pages wide the worksheet will be scaled to. This property is ignored if the Zoom property is set.
PDF Compliance	Allows the User To choose a PDF/A or PDF/X Complaint files <ul style="list-style-type: none"> • None (No PDF/A Output) • PDF/A-1b (PDF/A-1b compliant) • PDF/X-1a (PDF/X-1a compliant) • PDF/X-3 (PDF/X-3 compliant)
Conversion Timeout	Limits the amount of time in seconds that can be spent on a conversion. A value of zero means wait indefinitely.
Conversion Error Folder	Define the folder where documents are placed if their conversion raised an error.
Web Optimize	The generated PDF file will be Web Optimized (Linearized)
Convert Outlook Attachments	If selected (when converting .msg files) the generated PDF file will comprise the email plus each page of each attachment.

6.2.7.4 Merge TIFFs to PDF

Parameter	Notes
Output File Name	Target file template which can include %FILENAME (original filename without the extension) and %DIRNAME (directory name of original file)
Create Directories if Required	Force creation of any output directories if they do not already exist.
OCR Options	Choose "No OCR" to generate an image-only PDF. Choose "OCR" to generate searchable PDF and/or text files.
Continue on Error	Continue processing TIFF files after an error occurs.
OCR Language	Select the language the original file is written in. This will determine the dictionary that is used.
OCR Type	Maximum Speed

	Maximum Quality Balanced (the default)
Deskew	Straighten the image.
Auto-Rotate	Automatically rotate pages so that text flows left to right.
Despeckle	Remove specks below the specified pixel size from the image.
Output PDF	Choose “Yes” to Generate a PDF file.
Output TXT	Choose “Yes” to generate a .txt file (only applicable if OCR is specified).
Output RTF	Choose “Yes” to generate an .rtf file (only applicable if OCR is specified).
Output HTML	Choose “Yes” to generate an .htm file (only applicable if OCR is specified).
Advanced Flags	Command line flags to be passed through to the underlying executable.
PDF/A1-b	Select Yes if the result file must be PDF/A1-b Compliant

6.2.7.5 Set PDF Properties

Parameter	Notes
Output File Name	Target file template which can include %FILENAME (original filename without the extension), %DIRNAME (directory name of original file), %UNIQUEn (e.g. %UNIQUE4 for 4 digits), %BOOKMARK and %PAGEn (e.g. %PAGE4 for 4 digits)
Encryption Strength	Must be set to 128 bits if security attributes are to be set.
User Password	A password that will be required to open the document.
Owner Password	A password that will be required to change the document permissions.
Allow Printing	Allow high-quality printing
Allow Modify Contents	Allow assembly and other document modifications

Allow Copy	Allow text and graphic copying and extraction
Allow Modify Annotations	Allow modification of annotations
Allow Filling	Allow filling of form fields
Allow Screen Readers	Allow extraction of text and graphics in support of accessibility.
Allow Assembly	Allow rotation, insertion or deletion of pages.
Allow Degraded Printing	Allow low-quality printing
Author	Sets the Author property
Title	Sets the Title property
Subject	Sets the Subject property
Keywords	Sets the Keywords property
Creator	Sets the Creator property
Page Layout	The setting for initial document page display.
Page Mode	The setting for initial viewer mode
Non-Full Screen Mode	Only applicable where Page Mode=Full Screen. The setting for document page display when exiting Full Screen mode.
Hide Menu Bar	The viewer's menu bar will be hidden
Hide Window UI	The viewer's UI elements (scrollbars etc.) will be hidden
Hide Tool Bar	The viewer's tool bar will be hidden
Fit Window	The viewer will resize the document's window to fit the size of the first displayed page.
Center Window	The document window will be positioned in the center of the screen.

6.2.7.6 Custom Script

Parameter	Notes
Custom Script File	Name of custom script file to be run located in the Autobahn custom folder.

6.2.7.7 Merge PDF

Parameter	Notes
Output File Name	Target file template which can include %FILENAME (original filename without the extension) and %DIRNAME (directory name of original file)
Create Directories if Required	Force creation of any output directories if they do not already exist.
Retain Bookmarks	Generated files will include bookmarks from the original file.
Retain Metadata	Generated files will include metadata (such as Author and Title) from the original file.
File Names as Bookmarks	Generate bookmarks in the output PDF using filenames of source PDF files.

6.2.7.8 Split PDF

Parameter	Notes
Output File Name	Target file template which can include %UNIQUEn (unique number starting at 1, zero padded to n digits) %FILENAME (original filename without the extension) and %DIRNAME (directory name of original file)
Create Directories if Required	Force creation of any output directories if they do not already exist.
Retain Bookmarks	Generated files will include bookmarks from the original file.
Retain Metadata	Generated files will include metadata (such as Author and Title) from the original file.
Split Type	
Ranges (e.g. 1,3-10)	Set of page ranges separated by commas that defines which pages from the original should be extracted.
Repeat Every (Pages)	Apply the page range to each set of Page Ranges within the document. For example if 2-4 is specified for page

	ranges, and 4 is specified as the repeating range, then the range is re-applied every 4 pages.
--	--

6.2.7.9 Merge TIFFs

Parameter	Notes
Output File Name	Target file template which can include %FILENAME (original filename without the extension) and %DIRNAME (directory name of original file)
Create Directories if Required	Force creation of any output directories if they do not already exist.
Advanced Flags	

6.2.7.10 Split TIFF

Parameter	Notes
Output File Name	Target file template which can include %UNIQUEn (unique number starting at 1, zero padded to n digits) %FILENAME (original filename without the extension) and %DIRNAME (directory name of original file)
Create Directories if Required	Force creation of any output directories if they do not already exist.
Split Type	
Ranges (e.g. 1,3-10)	Set of page ranges separated by commas that defines which pages from the original should be extracted.
Repeat Every (Pages)	Apply the page range to each set of Page Ranges within the document. For example if 2-4 is specified for page ranges, and 4 is specified as the repeating range, then the range is re-applied every 4 pages.
Advanced Flags	

6.2.7.11 Read Inbox

This has the ability to read mailboxes and extract attachments using IMAP4, in accordance with the parameters specified below. Use of this step type requires a SERVER License.

Check with your System Administrator and ensure the following:

- IMAP4 is enabled for the mail server and your account.
- You have the IMAP address of the mail server.

Note: The files will be downloaded in the following format, [name@timestamp@email@.ext](#) where:

- Name = Filename
- timestamp= date of the email.
- email= The from address

The following Microsoft article provides information on how to verify basic IMAP connectivity by using Telnet: <http://support.microsoft.com/kb/189326>

Parameter	Notes
imap_server	The IMAP server address e.g. imap.company.co.uk
email_account	The email account to be read e.g. pdf@company.com
email_password	Password for the account. This is held encrypted.
in_mailbox	Mailbox to read e.g. Inbox
processed_mailbox	Mailbox to move processed email to e.g. Deleted Items. If left blank, the emails will be left in the inbox which can be useful for testing.
target	Folder in which to place the attachments extracted from the email. <i>Files are named name@timestamp@email@.ext where name.ext is the original filename, email is the user's email address and timestamp is an integer timestamp to ensure uniqueness.</i>
Include	Regular expression. If specified, only files matching the expression will be processed. E.g. *.tif. This allows alternate jobs to be created for different file types.
Exclude	Regular expression. If specified, files matching the expression will not be processed. E.g. *.pdf

6.2.7.12 Send Documents

Use of this step type requires a SERVER License.

Note: The input file of this step must be in the format of [name@timestamp@email@.ext](#) where:

- Name = Filename
- timestamp= date of the email.
- email= the address where we will send the output files.

Parameter	Notes
Domain	The sending domain E.g. aquaforest.com
SMTP Server	SMTP Server address E.g. smtp.aquaforest.com
Send Logon	Sending user logon e.g. admin.
Send User Password	Password for the account.
Sending User	Sending user e.g. admin@aquaforest.com

6.2.7.13 Convert PDF to TIFF

Parameter	Notes
Compression	Group 4 (For bitonal images) or LZW (for color).
Resolution	The DPI of the resulting TIFF File.

6.2.7.14 Extract Text from PDF

Parameter	Notes
Page From	The start of the range of pages from which to extract text. If not specified, a start page of 1 is assumed.
Page To	The end of the range of pages from which to extract text. If not specified, the last page is assumed.
Page Separator	This allows the definition of an optional page separator string in the output text file.

6.2.7.15 SharePoint Download

Parameter	Notes
SharePoint Site URL	Site, the URL of the SharePoint site that you want to access, e.g. http://localhost/testsite
SharePoint Online (Office 365)	Whether or not the upload location is in SharePoint Online (Office 365).
Username	The username used to connect to the SharePoint site. Leave empty to use Windows Credentials (for local SharePoint only).
Password	The password used to connect to the SharePoint site. Leave empty to use Windows Credentials (for local SharePoint only).
SharePoint Library	Library, the name of the library that you want to access, e.g. "Test Library"
SharePoint Subfolder	Download documents from the specified subfolder in the SharePoint library only.
Extension Filter	An optional extension mask that limits those files to manipulate, e.g. "pdf,tif"
Recurse SharePoint Library	If set to "Yes" sub-folders of the SharePoint Library are handled.
Debug	If set to "Yes" to see more processing information on the console.
Continue on Error	Continue processing if an error occurs.

6.2.7.16 SharePoint Upload

Parameter	Notes
SharePoint Site URL	Site, the URL of the SharePoint site that you want to access, e.g. http://localhost/testsite
SharePoint Online (Office 365)	Whether or not the upload location is in SharePoint Online (Office 365).
Username	The username used to connect to the SharePoint site. Leave empty to use Windows Credentials (for local SharePoint only).
Password	The password used to connect to the SharePoint site. Leave empty to use Windows Credentials (for local SharePoint only).
SharePoint Library	Library, the name of the library that you want to access, e.g. "Test Library"
SharePoint Subfolder	The subfolder inside the SharePoint library to upload the files into. The subfolder should be present in the library or else the following message will be displayed: "The remote server returned an error: (409) Conflict."
Extension Filter	An optional extension mask that limits those files to manipulate, e.g. "pdf,tif"
Recurse Source Folder	Recurse the source folder and its subfolders for files to upload and create the folders in SharePoint if they do not already exist. Note: If "Use Work Folders" is checked, then "Process Sub-Folders" must also be checked for this to work.
Debug	If set to "Yes" the user will see more processing information on the console.
Continue on Error	Continue processing if an error occurs.

6.2.7.17 Compress Image PDF

Parameter	Notes
Output File Name	Target file template which can include %FILENAME (original filename without the extension)
MRC JPEG Quality	JPEG quality setting (percentage value 1 - 100) for use in saving the background and foreground images. Default value is 75
MRC Background Level	Sampling size for the background portion of the image. The higher the number, the larger the size of the image blocks used for averaging which will result in a reduction in size but also quality. Default value is 3
MRC Foreground Level	Sampling size for the foreground portion of the image. The higher the number, the larger the size of the image blocks used for averaging which will result in a reduction in size but also quality. Default value is 3
Advanced Flags	<p>A number of advanced flags are available for use under guidance from Aquaforest technical support. Contact support@aquaforest.com if needed.</p> <p>/pdfa –convert the compressed document to PDF/A-1b format /nojb2 – use G4 fax compression rather than JBIG2 for bitonal images /debug – generate additional informational messages /allowtext – allow PDFs containing text to be processed</p>
Continue on Error	Continue processing files after an error occurs.

6.2.7.18 Extended Convert TIFF to PDF

Parameter	Notes
Output File Name	The output filename excluding the extension (which will be added according to the output file type).
Output File Type	One or more of the following, separated by commas if more than one is required. RTF PDF DOCX CSV* SML (Spreadsheet ML XML file)* HTM TXT *These output formats are suitable for table-oriented pages that can be mapped onto a spreadsheet format.
OCR Engine	The OCR engine to use. This must be set to use the IRIS engine.
OCR Language 1-5	You can set up to five different languages for OCR recognition in one page as long as they are in the same character set.
Auto rotate	Detect page orientation and correct if required
Deskew	Rotates the image to correct its skew angle.
Despeckle	Removes all the groups of connected pixels with a number of pixels below the parameter. Suggested range: 1-20.
Layout	The layout for the doc or rtf document <ul style="list-style-type: none"> • Standard • Flow
PDFVersion	This determines the PDF version of the generated PDF : 1.4 1.5 1.6 1.7 PDF/A1B (<i>PDF/A-1b</i>)
Remove Blank Page	Set this to true to remove blank pages from Tiff or PDF documents. A value needs to be set for sensitivity (see below).
Sensitivity	The sensitivity, from 1 to 100. With a high sensitivity, less blank pages are detected.

Work Depth	This parameter (0 – 255) defines how deeply the OCR engine will analyze a page with 255 being the deepest. For poorer quality documents, higher values can give better recognition results.
JPEG Quality	This parameter (0 – 255) determines the compression/quality of color JPEG images in generated PDFs. 0 gives the smallest file size whilst 255 gives the best quality. The default value is 128.
JPEG2000 Compression	Enable/Disable JPEG2000 Compression.
JPEG2000 Compression Mode	The JPEG2000 Compression Mode to use.
JPEG2000 Compression Value	The Value to set for the selected Compression Mode.
IHQC Compression	Apply Intelligent High Quality Compression
IHQC Compression Level	Level1 is the basic compression level while level 3 is the most advanced Intelligent High Quality Compression Mode.
IHQC Quality Factor	The quality Factor for IHQC
Create Folders If Required	Create output folder if it does not exists. Default true.
No OCR	Whether are not to perform OCR on the document (Yes to not perform OCR, No to perform OCR).
Advanced Despeckle	The size of the speckles to remove.
Remove White Pixels	By default, despeckle removes black pixels. If set to true, despeckle will remove white pixels rather than black pixels.
Binarization	Whether or not to perform binarization on the document.
Brightness	The brightness (higher values will darker the result).
Contrast	The contrast (lower values will darker the result).
Smoothing Level	Smoothing may be useful to binarize text with a colored background in order to avoid noisy pixels (0 disables smoothing, higher values smooth more).
Threshold	Sets the threshold for fixed threshold binarization (0 for automatic threshold computation).
Remove Lines	Whether or not to remove lines from an image (The image must be black and white).
Horizontal Clean X	The parameter for cleaning noisy pixels attached to the horizontal lines.
Horizontal Clean Y	The parameter for cleaning noisy pixels attached to the horizontal lines.
Vertical Clean X	The parameter for cleaning noisy pixels attached to the vertical lines.
Vertical Clean Y	The parameter for cleaning noisy pixels attached to the vertical lines.
Horizontal Dilate	The dilate parameter that helps the detection of horizontal lines.
Vertical Dilate	The dilate parameter that helps the detection of vertical lines.

Horizontal Max Gap	The maximum horizontal line gap to close. It is useful to remove broken lines.
Vertical Max Gap	The maximum vertical line gap to close. It is useful to remove broken lines.
Horizontal Max Thickness	The maximum thickness of the horizontal lines to remove. It is useful to keep vertical lines larger than this parameter. Can be also useful to keep vertical letter strokes.
Vertical Max Thickness	The maximum thickness of the vertical lines to remove. It is useful to keep horizontal lines larger than this parameter. Can be also useful to keep horizontal letter strokes.
Horizontal Min Length	The minimum length of the horizontal lines to remove.
Vertical Min Length	The minimum length of the vertical lines to remove.
Remove Dark Borders	Removes the dark surrounding from bitonal, grayscale or color images. The dark surrounding of the image is whitened (Note: The dark border should be touching the edge of the page for this to work).
Interpolation	Interpolates the source image to the given resolution. This value (the target resolution) must be greater than the source image's resolution.
Interpolation Mode	Sets the interpolation mode.
Keep Original Image	Yes to keep the original image as it is. No to output the image generated after pre-processing is applied.
Resources Folder	By default the OCR resources folder is a subfolder of the extendedocr folder. This option allows the resources to be located elsewhere if required.

6.2.7.19 Extended Merge TIFF to PDF

Check [section 6.2.5.18](#) above.

6.2.7.20 Extended OCR Image PDF

Parameter	Notes
Output File Name	The output filename excluding the extension (which will be added according to the output file type).
Output File Type	One or more of the following, separated by commas if more than one is required. RTF PDF DOCX CSV* SML (Spreadsheet ML XML file)* HTM TXT *These output formats are suitable for table-oriented pages that can be mapped onto a spreadsheet format.
OCR Engine	The OCR engine to use. This must be set to use the IRIS engine.
OCR Language 1-5	You can set up to five different languages for OCR recognition in one page as long as they are in the same character set.
Auto rotate	Detect page orientation and correct if required
Deskew	Rotates the image to correct its skew angle.
Despeckle	Removes all the groups of connected pixels with a number of pixels below the parameter. Suggested range: 1-20.
Retain Bookmark	This option allows you to retain the bookmarks in the new PDF if the old PDF was Converted to TIFF before it was OCR'd. Note: This Will Only work if : "Extract Images Method = Convert to TIFF"
Retain Metadata	This option allows you to retain the metadata in the new PDF if the old PDF was Converted to TIFF before it was OCR'd. Note: This Will Only work if : "Extract Images Method = Convert to TIFF"
Layout	The layout for the dock or rtf document <ul style="list-style-type: none"> • Standard • Flow
PDFVersion	This determines the PDF version of the generated PDF : 1.4 1.5 1.6

	<p>1.7 PDF/A1B (<i>PDF/A-1b</i>) Note: This Will Only work if : “Extract Images Method = Convert to TIFF”</p>
Extract Images Method	<p>Whether to convert the images in a PDF document to TIFF or not.</p> <ul style="list-style-type: none"> • Convert to TIFF – The pages in the PDF document are rasterized and saved as TIFF images • Native - This method places the OCR’ed text directly into a copy of the original PDF rather than creating an entirely new PDF.
Remove Blank Page	<p>Set this to true to remove blank pages from Tiff or PDF documents. A value needs to be set for sensitivity (see below).</p>
Sensitivity	<p>The sensitivity, from 1 to 100. With a high sensitivity, less blank pages are detected.</p>
Work Depth	<p>This parameter (0 – 255) defines how deeply the OCR engine will analyse a page with 255 being the deepest. For poorer quality documents, higher values can give better recognition results.</p>
JPEG Quality	<p>This parameter (0 – 255) determines the compression/quality of Color JPEG images in generated PDFs. 0 gives the smallest file size whilst 255 gives the best quality. The default value is 128.</p>
JPEG2000 Compression	<p>Enable/Disable JPEG2000 Compression.</p>
JPEG2000 Compression Mode	<p>The JPEG2000 Compression Mode to use.</p>
JPEG2000 Compression Value	<p>The Value to set for the selected Compression Mode.</p>
IHQC Compression	<p>Apply Intelligent High Quality Compression</p>
IHQC Compression Level	<p>Level1 is the basic compression level while level 3 is the most advanced Intelligent High Quality Compression Mode.</p>
IHQC Quality Factor	<p>The quality Factor for IHQC</p>
Remove White Pixels	<p>By default, despeckle removes black pixels. If set to true, despeckle will remove white pixels rather than black pixels.</p>
Binarization	<p>Whether or not to perform binarization on the document.</p>
Brightness	<p>The brightness (higher values will darker the result).</p>
Contrast	<p>The contrast (lower values will darker the result).</p>
Smoothing Level	<p>Smoothing may be useful to binarize text with a colored background in order to avoid noisy pixels (0 disables smoothing, higher values smooth more).</p>
Threshold	<p>Sets the threshold for fixed threshold binarization (0 for automatic threshold computation).</p>

Remove Lines	Whether or not to remove lines from an image (The image must be black and white).
Horizontal Clean X	The parameter for cleaning noisy pixels attached to the horizontal lines.
Horizontal Clean Y	The parameter for cleaning noisy pixels attached to the horizontal lines.
Vertical Clean X	The parameter for cleaning noisy pixels attached to the vertical lines.
Vertical Clean Y	The parameter for cleaning noisy pixels attached to the vertical lines.
Horizontal Dilate	The dilate parameter that helps the detection of horizontal lines.
Vertical Dilate	The dilate parameter that helps the detection of vertical lines.
Horizontal Max Gap	The maximum horizontal line gap to close. It is useful to remove broken lines.
Vertical Max Gap	The maximum vertical line gap to close. It is useful to remove broken lines.
Horizontal Max Thickness	The maximum thickness of the horizontal lines to remove. It is useful to keep vertical lines larger than this parameter. Can be also useful to keep vertical letter strokes.
Vertical Max Thickness	The maximum thickness of the vertical lines to remove. It is useful to keep horizontal lines larger than this parameter. Can be also useful to keep horizontal letter strokes.
Horizontal Min Length	The minimum length of the horizontal lines to remove.
Vertical Min Length	The minimum length of the vertical lines to remove.
Remove Dark Borders	Removes the dark surrounding from bitonal, grayscale or color images. The dark surrounding of the image is whitened (Note: The dark border should be touching the edge of the page for this to work).
Interpolation	Interpolates the source image to the given resolution. This value (the target resolution) must be greater than the source image's resolution.
Interpolation Mode	Sets the interpolation mode.
Keep Original Image	Yes to keep the original image as it is. No to output the image generated after pre-processing is applied.
Resources Folder	By default the OCR resources folder is a subfolder of the extendedocr folder. This option allows the resources to be located elsewhere if required.

6.2.7.21 OCR Any File to PDF

Parameter	Notes
Output File Name	Target file template which can include %FILENAME (original filename without the extension) and %DIRNAME (directory name of original file)
Create Directories if Required	Force creation of any output directories if they do not already exist.
Continue on Error	Continue processing TIFF files after an error occurs.
Over Write Existing	Over Writes the target document if it exists.
PDF/A1-b PDF/A2-b PDF/A3-b	Select the PDF/A compliant version you would like your output file to be
Password Files	This option specifies what Autobahn does when it encounters a password protected PDF file. <ul style="list-style-type: none"> • Take no action. • Move to Error Folder • Copy to Error Folder
Maximum Cores	This specifies the number parallel files you want to be processed at a given time. Note: You need the multi core license for this.
OCR Language	Select the language the original file is written in. This will determine the dictionary that is used.
Deskew	Straighten the image.
Auto-Rotate	Automatically rotate pages so that text flows left to right.
Despeckle	Remove specks below the specified pixel size from the image.
OCR to Text File	Choose “Yes” to Generate text Output
Output File	<ul style="list-style-type: none"> • Plain Text (txt). • Plain Text (txt) No PDF • MS Word (rtf) • HTML
Advanced Flags	Command line flags to be passed through to the underlying executable.
Retain Metadata	Copy metadata from the source PDF to the Searchable result PDF.
Retain Bookmarks	Copy bookmarks from the source PDF to the Searchable result PDF.

Extract PDF Images Via	<p>Choose the method for PDF image extraction.</p> <ul style="list-style-type: none"> • Auto (default) • Via Bitmap • Convert to TIFF
TIFF Compression	<p>Sets the Compression for the TIFF file used if the “Convert To TIFF” Option above is used.</p> <ul style="list-style-type: none"> • Auto (Selects Group 4 if the page is Black AND White else it uses LZW Compression) • Group 4 (Black and White) • LZW (Colored)
JBIG2 Compression	<p>This option will compress bitonal images in generated PDFs using JBIG2 compression rather than the default Group 4 compression scheme. This will result in smaller PDF file sizes, at a cost of increasing processing time.</p>
MRC Compression	<p>Applies Mixed Raster Compression which can drastically reduce the size of PDF documents.</p>
Non-Image PDFs	<p>This defines how non-image PDFs should be treated. The options are :</p> <ul style="list-style-type: none"> • Raise Error (default) • Rasterize and OCR • Skip • Pass Through
DPI	<p>When OCRing a PDF, the PDF is rasterized to produce a TIFF file which is then OCRed. By default the TIFF image resolution is determined from the images embedded in the source PDF but this flag can be used to override default processing and specify the DPI of the TIFF that will be generated.</p>
Box/Graphics Processing	<p>By default, if an area of the document is identified as a graphic area then no OCR processing is run on that area. However, certain documents may include areas or boxes that are identified as “graphic” or “picture” areas but that actually do contain useful text.</p> <p>To ensure that the OCR engine can be forced to process such areas there are two options :</p> <p><i>“Treat all Graphics Areas as Text”</i>. This option will ensure the entire document is processed as text.</p> <p><i>“Remove Box Lines in OCR Processing”</i>. This option is ideal for forms where sometimes boxes around text can cause an area to be identified as graphics. This option removes boxes from the temporary copy of the imaged used by the OCR engine. It does not remove boxes from the final image.</p>

	Technically, this option removes connected elements with a minimum area (by default 100 pixels).
Line Removal in OCR Processing	This removes lines and boxes during OCR processing to improve recognition – particularly in cases where characters “touch” lines.
MRC	This enables Mixed Raster Compression which can dramatically reduce the output size of PDFs comprising color scans. Note that this option cannot be used in conjunction with the “Native” Image Method for OCRing PDFs as the Native method does not adjust the images within the PDF.
Any File To PDF Conversion Settings	
Conversion Timeout (ms)	Limits the amount of time in milliseconds that can be spent on a conversion. A value of zero means wait indefinitely.
Convert Bookmarks	For MS Word, convert bookmarks
Bookmark Depth	This property will take effect only when the ConvertBookmarks property is set to True and defines the Word headings that will be mapped to PDF.
Convert Hyperlinks	Sets the flag to indicate whether to convert Word hyperlinks to PDF hyperlinks.
Print All Sheets (Excel)	The flag that indicates whether to print all Excel worksheets or not.
Print Background Color (IE)	For files printed via IE Sets the flag that indicates whether to print background color or not when printing.
Print Scale % (Visio)	For Visio files, sets the print scale
Font Embedding	The option PRN_FONT_EMBED_FULLSET (embedding full set of font) will cause significant increase in PDF file size, especially for CJK font, and therefore not recommended. If you need to embed font, PRN_FONT_EMBED_SUBSET (embed subset of font) will be a better choice.
Font Substitution	For the PRN_FONT_SUBST_TABLE (use font substitution table) option, you need to configure the substitution table. The table is stored under the "Device Setting" section of the printer driver properties (can be accessed from Control Panel).
Merge Attachments PDF	Set this flag to true if you want if you want converted pdf attachments to merged to the output pdf file. Otherwise the converted files will be merged back to the pdf.

Retain Original Attachment	Set this flag to true if you want the original attachments to be retained in the pdf file after they are merged. This flag only gets picked up if the MergeAttachments flag above is used.
Page Width	In Inches.
Paper Orientation	PORTRAIT or LANDSCAPE
PDF Compliance	<p>Allows the User To choose a PDF/A or PDF/X Complaint files</p> <ul style="list-style-type: none"> • None (No PDF/A Output) • PDF/A-1b (PDF/A-1b compliant) • PDF/X-1a (PDF/X-1a compliant) <p>PDF/X-3 (PDF/X-3 compliant)</p>
Convert Attachments	For MSG files, email attachments are processed so that the resulting PDF is composed of the email plus each page of each attachment.
Zoom (Excel)	Sets Zoom of the work sheet.

6.2.7.22 Barcode TIFF/PDF

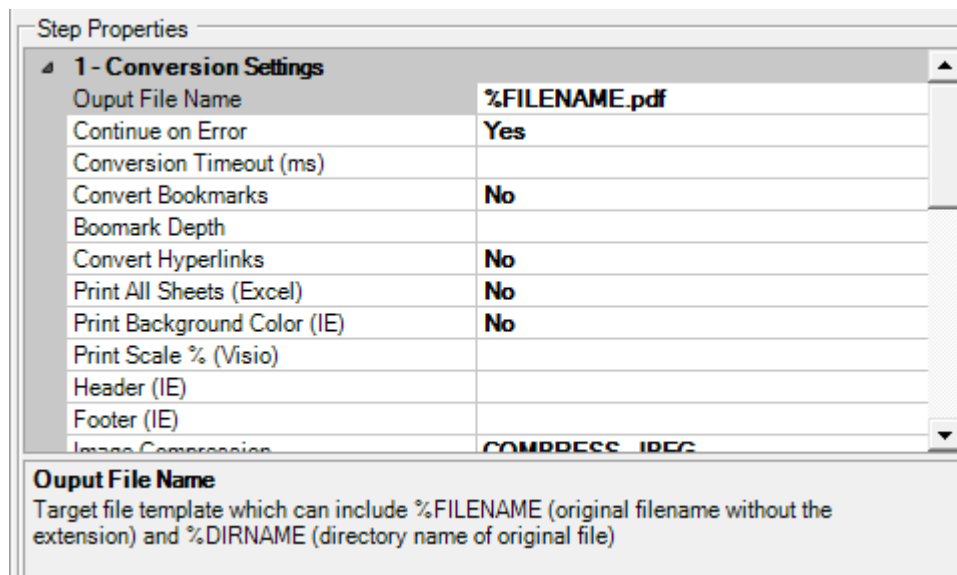
Screen Field / Button	Description
Split By Barcode	Choose this option to split the TIFF/ PDF file by Barcode
Rename By Barcode	Choose this option to rename the TIFF/PDF file based on Barcode.
Barcode Type	Barcode formats supported.
Split options	Various Options for splitting Files by Barcode
Try Harder	Spend more time to try to find a barcode; optimize for accuracy, not speed. Default is true.
Output File(s) With Barcode	The output file path template where the split files will be saved. - %VALUE% : Replaced by the barcode value found. - %INDEX% : Replaced by the current split index. - %FILENAME : Replaced by the file name
Output File(s) No Barcode	The renaming template to use for page ranges where no barcodes were identified. Allowed templates: - %INDEX%; Replaced by the current split index. - %FILENAME: Replaced by the filename of the source file.
Advanced Flags	Additional advanced command line flags may be entered here (see section 3)
Binarize	Switch this on if your input files are coloured, it first converts it to black and white before conversion.
Remove Lines	Remove lines from images.
Zones	Only examine the region specified for barcode(s). Note to specify the zone you need to set the following in the step properties: <ul style="list-style-type: none"> • Left • Top • Width • Height
Box Size	This option is ideal for forms where sometimes boxes around text can cause an area to be identified as graphics. This option removes boxes from the temporary copy of the imaged used by the barcode reader. Technically, this option removes connected elements with a minimum area (in pixels and defined by this property). This option is currently only applied for bitonal images.
Despeckle	Remove specks below the specified pixel size from the image.
Deskew	Deskew (straighten) the image. The default value is false

6.2.7.23 High Availability

Screen Field / Button	Description
Current Job ID	The Job ID on the current host.
Default Status	Select the Default status of the current host (Master Salve)
Shared Status File	Enter the shared.txt file location – this needs to be on a shared network location accessible to both hosts.
Hostname	Name of the paired host.
ADX Install Path	Install path of Autobahn DX on the paired host.
Job ID	The Job ID on the paired host

6.2.8 Step Type Properties

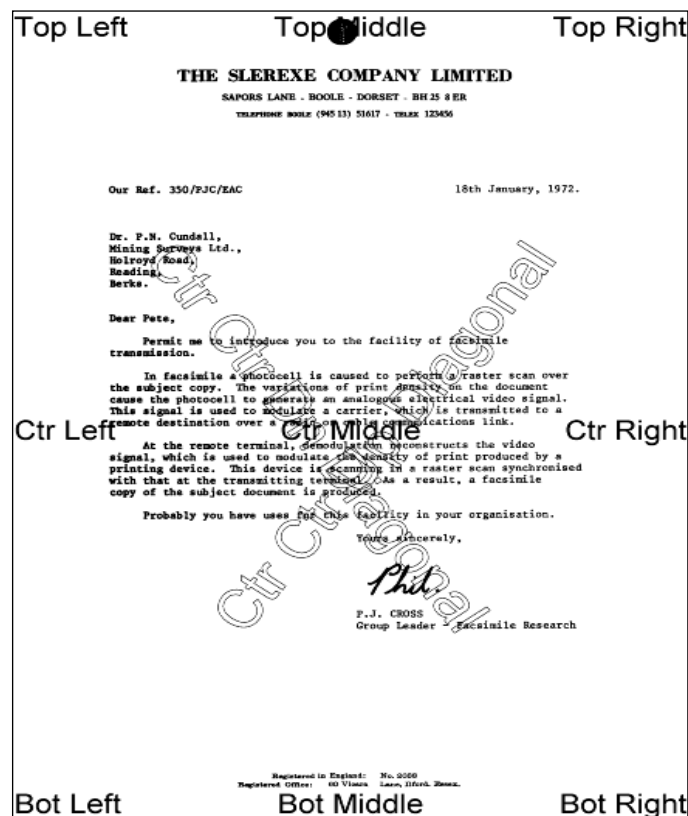
Each of the Step Types referred to in the previous section will have a set of properties such as that shown below for “Convert any File to PDF”. Each property has a description associated with it which is displayed when the property is highlighted.



6.2.9 Stamps

Autobahn DX allows dynamic and static textual stamps to be placed onto the PDF documents generated by the product by means of a stamps configuration file (stamps.txt in the “tj\stamps” directory) together with appropriate parameters.

6.2.9.1 Stamp Placement



The image above indicates the possible placement for stamps. These are determined according to the parameters in the stamps.txt configuration file. The product comes with a sample set of stamps.

6.2.9.2 Stamp Specifications

For example, the stamp that reads “Ctr Ctr Up Diagonal” would be produced by the following lines in the file :

```
BEGINSTAMP
afsName=STAMP
afsText=Ctr Ctr Up Diagonal
afsFontSize=63
afsFont=HELVETICA
afsTextMode=1
afsVpos=CENTER
afsHpos=CENTER
afsDiag=UP
ENDSTAMP
```

Here is a description of each of the parameters *which are case sensitive* :

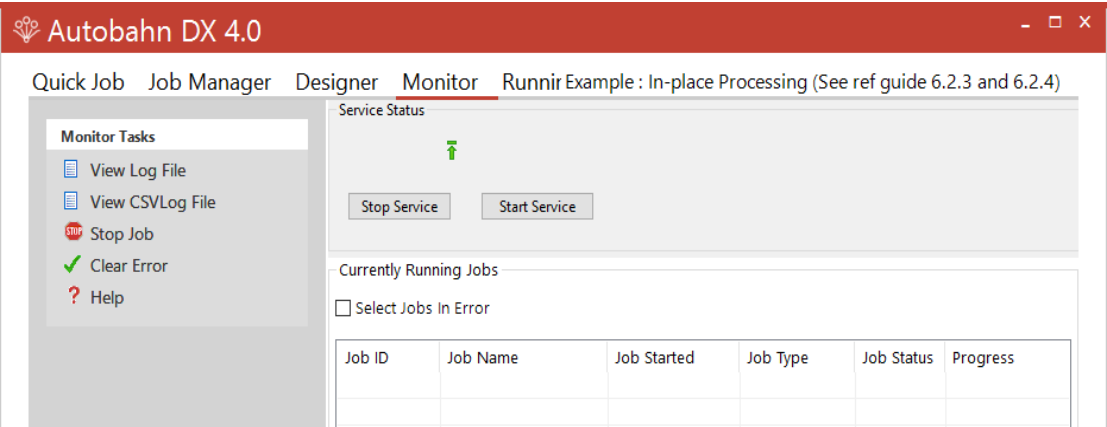
Parameter	Description
BEGINSTAMP	Required to mark the beginning of a stamp specification.
ENDSTAMP	Required to mark the end of a stamp specification.
afsName	Stamp name. If the stamp name is "STAMP" then the stamp will always be applied. Any other name is used as an identifier and the stamp will only be applied when the "Stamp Name" step property value match the name.
afsText	Stamp text. This may be a fixed piece of text, or may include %p (which will be replaced by the page number) or %s which will be replaced by the value of the step property value "Stamp Value".
afsFontSize	Point size for the stamp text.
afsFont	Font to be used. The following are supported : TIMES-ROMAN HELVETICA COURIER
afsTextMode	1=Outlined Text 2=Sold Text
afsVpos	Vertical Position of the stamp, which may be one of the following : TOP CENTER BOTTOM
afsHpos	Horizontal Position of the stamp, which may be one of the following : LEFT CENTER RIGHT
afsDiag	Diagonal orientation of the stamp, which may be one of the following : NONE UP DOWN
afsWeight	Font Weight : 0 (default) – 5 (most bold)
afsStartPage	First page of the document to which stamps should be applied (default 1)
afsEndPage	Last page of the document to which stamps should be applied (default 0 which means there is not a limit)
afsPageIncrement	Determines whether stamps should only be applied every <i>n</i> th page where <i>n</i> is afsPageIncrement. Default is 0 which means stamps will be applied to all pages (subject to start/end page specifications).

The "Stamp Name" and "Stamp Value" parameter for "Convert TIFF to PDF" and "OCR Image Only PDF" allows the user to specify the stamp to use in stamp.txt (this file can contain multiple stamps).

- Stamp Name represents the corresponding stamp with the same "afsName" in the stamp.txt file.
- Stamp Value is a text value that can be appended to the "afsText" at runtime.

6.3 Monitor

This provides an interface to stop and start the Autobahn service, and to see which Jobs are currently running.



Menu	Item	Action
	View Log File	View the log file of the currently selected job.
	Stop Job	Halt execution of the selected job.
	Clear Error	Clears an error flag associated with a job, allowing it to be rerun.
	Stop Service	Stop the Autobahn service.
	Start Service	Start the Autobahn service.

6.4 Modules and Options

The Modules and options tab serves two purposes. The first use is for defining the license key which was explained in [section 3.3](#). The second use is to define the information of the Email server. This is used to support the “Send Email on Error” functionality defined in the previous section. The information entered is help in Autobahn.config in the config directory. The password is held in an encrypted form.

Monitor Running Job **Modules & Options** Help Example : In-place Processing (See ref guide 6.2.3 and 6.2.4)

License Key

Permanent License
Server License
Multi-core License With 16 cores

Trial License Options

☐ Workstation
☐ Server

☐ Extended OCR

☐ Asian Languages
☐ Intelligent High Quality Compression (IHQC)
☐ Multi-core

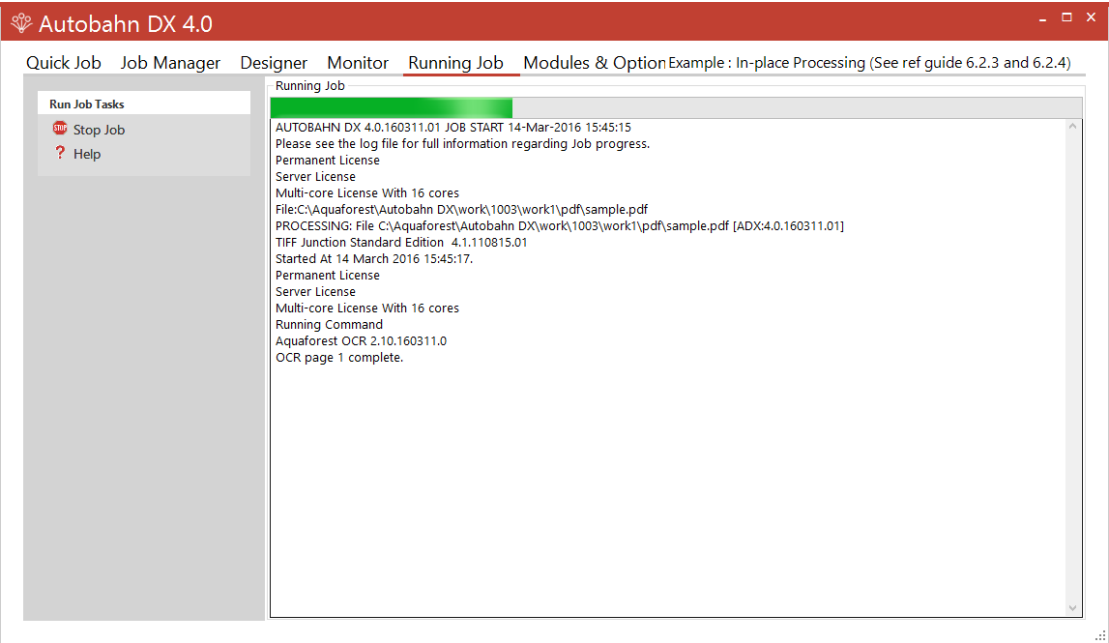
SMTP Settings

Server ☐ Need Authentication
SMTP Port
Username
Password

Field	Description
Server	Address of the Server hosting the SMTP server.
SMTP Port	SMTP Server port. Default is 25.
Username	Username for authentication by the server.
Password	Password for the username.
Need Authentication	If checked, authentication will be used and the username and password can be filled in.

6.5 Running Jobs via Job Manager or Designer

Choosing “Run Now” from the menu executes the current job definition and all output is placed in the text area window, as well as the Job log files.



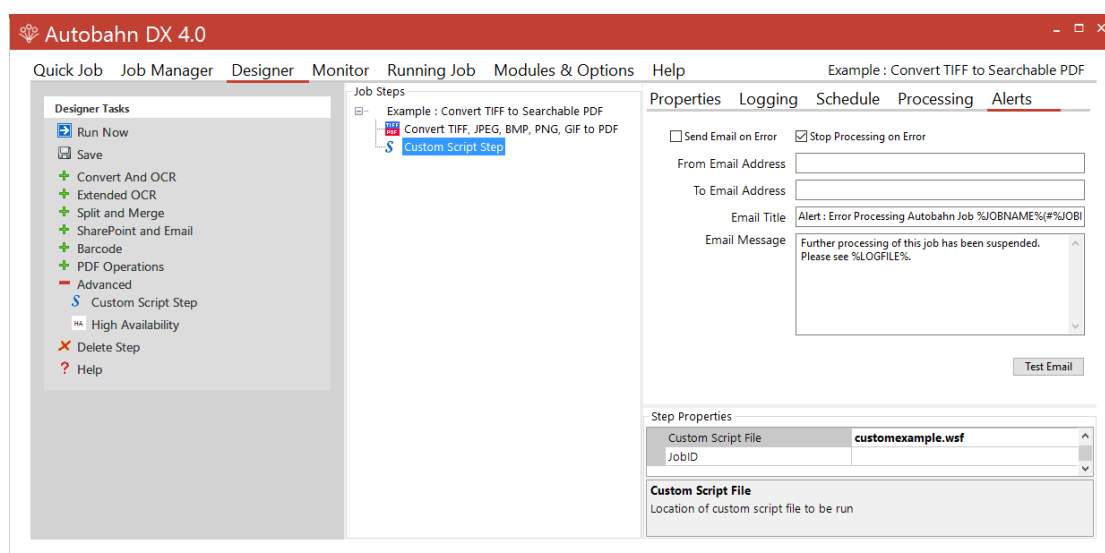
Menu	Item	Action
	Stop	Stops the currently running job.
	Help	Take you to the Help tab.

7 SCRIPTING CUSTOM STEPS

Autobahn DX allows custom job steps to be defined that can be included in a Job Definition in the same way as any other step type. The custom step itself can be any form of executable file or script. Some template wsh scripts are included which demonstrates calling a command-line executable from within the script.

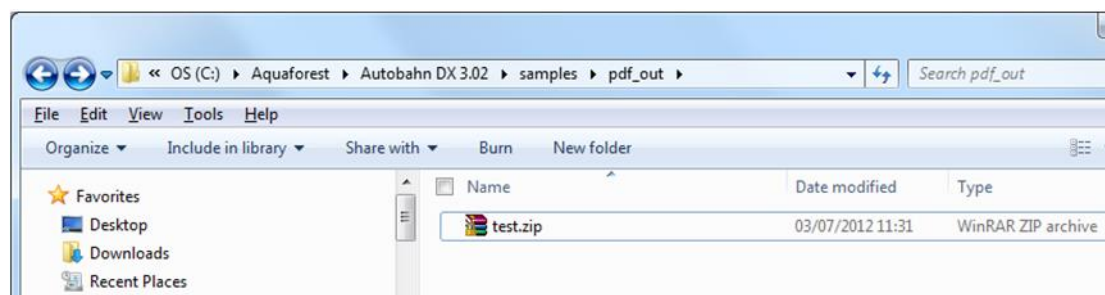
7.1 Custom Script Example

Included with the product is an example custom script (in the Autobahn DX custom folder) that will split a PDF file into single pages and then create a single ZIP file that contains the pages. The example makes use of the Freebyte Zip application which you can download from here <http://www.freebyte.com/download/fbzipack.exe> , run and unpack into C:\Aquaforest\Autobahn DX\custom.



Custom script files must be placed in C:\Aquaforest\Autobahn DX\custom folder. In this case the custom script file is customexample.wsh.

The results of the Job Definition will be a zipped file as shown:



7.2 Custom Example Script

The contents of Customexample.wsf are shown below. This file can be used as a template for other custom job steps.

Note that by default Autobahn DX processes job steps by using a separate folder for each step. Files to be processed will be in the folder defined by the infolder variable and the resultant files placed in the folder defined by the outFolder variable. This is required even if the custom step does not actually change the files.

Jobs can be configured to run without using Work Folders, in which case the infolder and will be the same.

```
<job>
<runtime>
</runtime>
<script language="JScript">

/*****
**
**      (C) Aquaforest Limited 2006
**
**      FILE
**      customexample.wsf
**
**      DESCRIPTION
**      Example Custom Script for Autobahn DX
**
*****/

var WshShell = WScript.CreateObject("WScript.Shell");

/*****
      Arguments
*****/

var inFolder="";
var outFolder="";

if(WScript.Arguments.Named.Exists("in"))
{
    inFolder=WScript.Arguments.Named("in");
}
if(WScript.Arguments.Named.Exists("out"))
{
    outFolder=WScript.Arguments.Named("out");
}

doOut("In Custom Script Example! /in="+inFolder+" /out="+outFolder);

doCmd('C:\\Program Files\\Aquaforest\\Aquaforest Autobahn\\custom\\fbzip.exe -a "'+outFolder+'\\customexample.zip'
'+inFolder+' ');

/* Write Output */

function doOut(s)
{
    WScript.StdOut.WriteLine(s);
    if(loggingOn)
    {
        logOut.WriteLine(s)
    }
}

/* Execute Command */
```

```

function doCmd(cmd)
{
    doOut(cmd);
    var oExec = WshShell.Exec(cmd);
    while(oExec.Status == 0)
    {
        WScript.Sleep(100);
        if(verbose)
        {
            while(!oExec.StdOut.AtEndOfStream)
                doOut(oExec.StdOut.ReadLine())
        }
        else
        {
            while(!oExec.StdOut.AtEndOfStream)
                oExec.StdOut.ReadLine()
        }
        while(!oExec.StdErr.AtEndOfStream)
            doOut(oExec.StdErr.ReadLine())
    }

    if(verbose)
    {
        while(!oExec.StdOut.AtEndOfStream)
            doOut(oExec.StdOut.ReadLine())
    }
    else
    {
        while(!oExec.StdOut.AtEndOfStream)
            oExec.StdOut.ReadLine()
    }
    while(!oExec.StdErr.AtEndOfStream)
        doOut(oExec.StdErr.ReadLine())

    if(oExec.ExitCode==0)
    {
    }
    else
    {
        doOut("Task failed with error code : "+oExec.ExitCode);
        WScript.Quit(1);
    }
}
</script>
</job>

```

7.3 Further Examples

7.3.1 Postscript to PDF: custom_ps.wsf

This script included in the custom folder can be used to convert Postscript files to PDF. It makes use of the `ps2pdf.bat` script included in Ghostscript 8.63. See <http://pages.cs.wisc.edu/~ghost/>

The script should be placed in the Autobahn DX custom folder (by default `C:\Aquaforest\Autobahn DX\custom`) and can be used by creating a job with a custom script step and entering *custom_ps.wsf* as the value of Custom Script File.

If required, changes can be made to the `allowableExtensions` variable and the `genCommand()` function.

As the `ps2pdf` script calls other Ghostscript components, the Ghostscript bin and lib folders should be added to the system PATH.

7.3.2 MSG to PDF: custom_MSG.wsf

As Microsoft Outlook is limited in the way that it can be automated in the way required by the easyPDF Driver used by Autobahn DX it can be more pragmatic to employ a custom script approach,

This script can be used to convert msg files to PDF. This example makes use of TotalMailConverter (see <http://www.coolutils.com/TotalMailConverter>) but other products could equally be used.

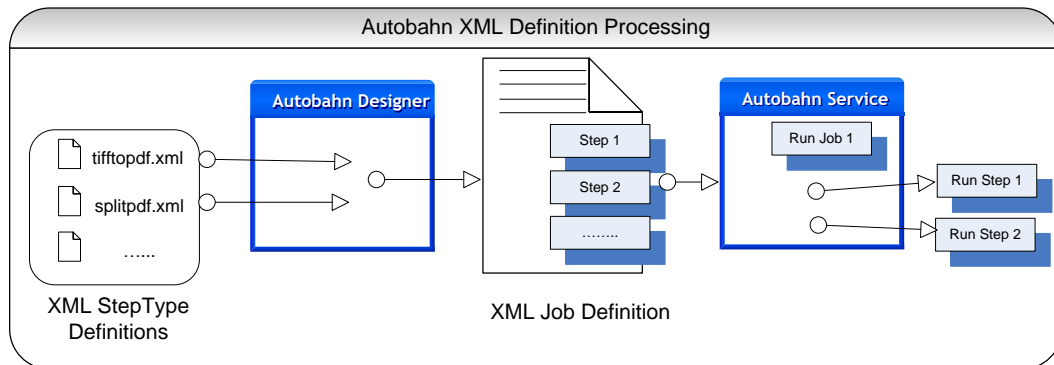
The script should be placed in the Autobahn DX custom folder (by default `C:\Aquaforest\Autobahn DX\custom`) and can be used by creating a job with a custom script step and entering *custom_msg.wsf* as the value of Custom Script File.

If required, changes can be made to the `allowableExtensions` variable and the `genCommand()` function.

The Autobahn DX service should be configured to allow interaction with the desktop and to run as a standard user account rather than the Local System account.

8 JOB DEFINITION XML FILES

8.1 Overview of Job Definition Creation and Processing



Autobahn Job Definitions are represented as XML files which can be created “by hand”, or more likely by using the Autobahn Administrator (see [section 6](#)). A job definition file contains certain standard pieces of information (source folder for example) and also has a “StepType” Definition for each step in the process. It is these step definitions that are executed via the Autobahn service.

8.2 Job IDs

Autobahn uses a sequential integer job id that starts at 1001. The “next job id” value is held in the config/next_job_id/xml file and is updated each time a new job is created or copied using the administration tool.

The initial contents of the file are:

```
<?xml version="1.0" encoding="ISO8859-1" ?>
<next_job_id>1001</next_job_id>
```

8.3 Sample Job Definition File (Excluding Step Details)

Below is a simple example of a job definition which is designed to continuously (every 30 seconds) monitor a directory (c:\faxes) for new .tif files and convert them to searchable PDF, and place the resulting files in c:\processed faxes.

```
<?xml version="1.0" encoding="ISO8859-1" ?>
<autobahnjob>
  <jobid>1002</jobid>
  <jobname>Watch Incoming Faxes</jobname>
  <schedulertype>continuous</schedulertype>
  <scheduleevery>30</scheduleevery>
  <scehduleeveryunits>seconds</scheduleevery>
  <schedulefrom>00:00</schedulefrom>
  <scheduleto>23:59</scheduleto>
  <scheduleat></scheduleat>
  <joblogfile></joblogfile>
  <jobsteps>1</jobsteps>
  <jobsourcetype>folder</jobsourcetype>
  <jobsource>c:\faxes</jobsource>
  <jobtarget>c:\processedfaxes</jobtarget>
  <joberrors>c:\errorfaxes</joberrors>
```

```

<jobdeleteonsuccess>yes</jobdeleteonsuccess>
<jobwork>C:\autobahnwork\1002</jobwork>
<jobstep>
  <stepsequence>1</stepsequence>
  <steptype>splitpdf</steptype>
  <stepdetails>
    (see section 8.4 below)
  </stepdetails>
</jobstep>
</autobahnjob>

```

XML	Element	Description
jobid		Job ID number (see 3.2 above).
jobname		Job Description. Default is "Job %JOBID%"
scheduletype		Ad-hoc, continuous or onceperday
scheduleevery		For continuous, interval between runs
scheduleeveryunits		For continuous, unit of interval between runs
schedulefrom		For continuous, start time for runs
scheduleat		For continuous, end time for runs
scheduleto		For onceperday, the time at which to run
joblogfile		Location of the job logfile. By default the logfile is logs/%JOBID%/TIMESTAMP%.txt
jobsteps		The number of jobsteps
jobsourcetype		File, folder or tree
jobsource		The source file or folder
jobtarget		The target folder
Joberrors		Folder for job errors. If not specified files that cannot be processed will be placed in jobwork/errors (this is also the default).
jobdeleteonsuccess		If "yes", when a job has successfully completed, all work files (hence input files) are deleted.
jobwork		The root of the temporary work directories used by the job. The work directories themselves are named work1, work2 etc.
jobstep		Contains the definition of a job step
stepsequence		Step sequence number starting at 1.
steptype		The steptype identifies which job element defines the step (see section 8.4 below)
stepdetails		Holds additional step definitions which will be used as the step definition file.

8.4 Sample Step Details

The details of the step are provided here and provide sufficient information for the Autobahn service to execute the step, in conjunction with information in the StepType definitions. Files are moved from the jobsource directory into the work directory specified by <sourcefiles> and the result files are placed in the <target> directory. Upon completion of all the steps, the service will move the files from the final work directory to the <jobtarget> directory.

```
<stepdetails>
  <operation>pdf</operation>
  <sourcetype>folder</sourcetype>
  <sourcefiles>C:\autobahnwork\1002\work1</sourcefiles>
  <target>C:\autobahnwork\1002\work2</target>
  <errors>c:\errorfaxes</errors>
  <joboptions>-d -k 1 -h 0 -o %FILENAME.pdf -p </joboptions>
  <advancedflags></advancedflags>
  <metadata></metadata>
  <security></security>
  <dcoptions></dcoptions>
  <custom_script></custom_script>
  <custom_script_pre_job>N</custom_script_pre_job>
  <custom_script_post_job>N</custom_script_post_job>
  <custom_script_pre_folder>N</custom_script_pre_folder>
  <custom_script_post_folder>N</custom_script_post_folder>
  <custom_script_pre_file>N</custom_script_pre_file>
  <custom_script_post_file>N</custom_script_post_file>
  <custom_script_on_error>N</custom_script_on_error>
  <logfile></logfile>
</stepdetails>
```

XML	Element	Description
operation		The operation (e.g. split). This is defined in the step definition file for the steptype.
sourcetype		Folder, file or tree.
sourcefiles		Source file or folder.
target		Target folder.
errors		Files that cannot be processed are placed in this directory. Inherited from the Job definition.
joboptions		These are steptype-specific parameters that are derived from the options selected in the Job Designer.
advanced Flags		Additional advanced steptype-specific parameters that can be entered manually only.
metadata		PDF file metadata settings derived from the options selected in the Job Designer.
security		PDF file security settings derived from the options selected in the Job Designer.
dcoptions		PDF file open options derived from the options selected in the Job Designer.
custom_script		If not left blank, specifies the name of a custom windows script file in %PDFJUNCTIONDIR%\custom or

	%TIFFJUNCTIONDIR%/custom that will be called in accordance with the custom_script_* settings below.
custom_script_pre_job	If =Y, the custom script will be called at the start of the job
custom_script_post_job	If =Y, the custom script will be called at the end of the job
custom_script_pre_folder	If =Y, the custom script will be called at the start of processing each folder
custom_script_post_folder	If =Y, the custom script will be called at the end of processing each folder
custom_script_pre_file	If =Y, the custom script will be called at the start of processing each file
custom_script_post_file	If =Y, the custom script will be called at the end of processing each file
custom_script_on_error	If =Y, the custom script will be called when a processing error occurs.
logfile	If specified, output will be logged to a file with this name in %PDFJUNCTIONDIR%\logs or %TIFFJUNCTIONDIR%\logs

Notes

- Note that step-level custom scripts referred to above as supported by TIFF Junction and PDF Junction are different from “custom scripts” that may be used as a step.
- The step-level log files as referred to above as supported by TIFF Junction and PDF Junction are separate from the overall log file used by Autobahn, and can only be specified manually.

9 EXTENDED STEP TYPES: STEP TYPE DEFINITION XML FILES

Autobahn is designed to be extensible, and as such is driven by StepType Definitions which are used to define each of the possible steps that can be included in a job definition.

A step type definition will include information such as:

- Type of Document Accepted (e.g. TIFF, Word, PDF)
- Supported Source Types (e.g. Folder, Email...)
- Type of Document Output (e.g. PDF)
- Process to Call
- Command Line Parameters

9.1 Sample StepType Definition

```
<?xml version="1.0" encoding="ISO8859-1" ?>
<steptype>tifftopdf</steptype>
<command>cscript %AUTOBAHNROOT%/tj/bin/tiffjunction.wsf
/jobid=%AUTOBAHNTEMP%/TEMPJOBFILE%</command>
<operation>pdf</operation>
<joboptions>-p</joboptions>
<wrapper>tiffjunction_job</wrapper>
<multithread>yes</multithread>
<validinputtype>tif</validinputtype>
<outputtype>pdf</outputtype>
<iconfile>tifftopdf.bmp</iconfile>
<attributes>
  <attribute>
    <attributeid>SPDF</attributeid>
    <attributename>Searchable PDF</attributename>
    <attributetype>option</attributetype>
    <attributedefault_value>Yes</attributedefault_value>
    <attributeoptions>
      <option>
        <value>Yes</value>
        <joboptions>-k 3</joboptions>
      </option>
      <option>
        <value>No</value>
        <attributejoboptions></attributejoboptions>
      </option>
    </attributeoptions>
  </attribute>
  <attribute>
    <attributeid>ofn</attributeid>
    <attributename>Output File Name</attributename>
    <attributetype>value</attributetype>
    <defaultvalue>%FILENAME%.pdf</defaultvalue>
    <attributejoboptions>-o%ATTRIBUTEVALUE%</attributejoboptions>
  </attribute>
</attributes>
```

XML	Element	Description
	steptype	The name that uniquely identifies the step type
	command	The command line to be executed.
	operation	The “internal” step type name used by the command
	joboptions	Setting for the <joboptions> element in <stepdetails>. This value may be added to by attribute settings.
	wrapper	Wrapper element to be used when creating temp step job file.
	multithread	Yes or no – determines whether multiple instances of the steptype may run concurrently.
	validinputtype	Type(s) of files accepted by the step. (NB this is NOT the same as a file extension). * means all types. Multiple values may be separated by commas.
	outputtype	Type of file output by the step. (NB this is NOT the same as a file extension)
	iconfile	Bitmap file with the steptype icon. The file is assumed to be in the %STEPTYPEDEFDIR% directory.
	attribute	The definition of an attribute which the user may set a value for
	attributeid	Unique internal name for the attribute
	attributename	Display name for the attribute
	attributetype	Option or value
	attributeoptions	Only applies where attributetype=value. Note that the default option is the first listed
	value	Display value
	valuejoboptions	String to be appended to <joboptions>
	defaultvalue	Default value (for value types)

10 AUTOBAHN DX COMMAND LINE INTERFACE

A command line interface is available to run any job that could be run within the Quick Job section of the product. The set of parameters is comprehensive and command line syntax is generally best built by using the Quick Job “Command Line” menu option.

The stand-alone command-line interface can only be used with the Server licenses.

A sample Visual Studio 2008 project showing calling of the command line interface via C# is provided in the AUTOBAHN \code examples\CommandLineCall folder where AUTOBAHN is the folder where Autobahn DX has been installed – by default this is C:\Aquaforest\Autobahn DX.

autobahndx.exe /operation=[operation name] /source=[tiff file or folder] /output=[output file] /target=[target folder] [/option=value]...

Examples

1. Generate a searchable PDF c:\destination\2.pdf from a TIFF file

autobahndx.exe /source=C:\source\2.tif /sourcetype=file /target=C:\destination\2 /outputtype=pdf /operation=tifftopdf /ocr=true

2. Generate a searchable PDF file from a folder of TIFF and JPEG files, with Deskew and page orientation detection and correction.

autobahndx.exe /source=C:\Source /sourcetype=folder /target=C:\destination /output=outfile /outputtype=pdf /ocr=true /autorotate /deskew /operation=mergetifftopdf

3. Generate searchable PDF files from image PDF files found in a folder and subfolders.

autobahndx.exe /source=c:\C:\Users\khalil\Desktop\2 /sourcetype=tree /target=c:\Users\khalil\Desktop\3 output=%FILENAME /ocr=true /outputtype=pdf /operation=ocrimagepdf

The flags below work with **autobahndx.exe** file in the bin folder.

10.1.1 General Job Options

Parameter	Notes
/source	Source file or folder
/sourcetype	One of : file, folder, tree
/target	The Target folder

/output	The output filename mask e.g %FILENAME.xxxx where xxxx is the file extension.
/logfile	i.e. /logfile="C:\logfiles\log.txt"
/debug	Output additional logging
/onerrorcontinue	When processing folders or folder trees, the process will by default halt when an error is found. If this is set to true, processing will continue.
/errors	Define the folder where documents are placed if their conversion raised an error.
/createfolders	If set to true, destination folders will be created if required.
/overwrite	If set to true, existing destination files will be overwritten.
/advancedflags	This enables advanced PDF Junction and TIFF Junction flags to be used, even if there is no direct equivalent in autobahndx.exe.
/operation	<p>This represents the operation you want to carry out, below is the list of operation available in autobahndx, they correspond to the step types in section 6.2.5.</p> <ul style="list-style-type: none"> • tifftopdf • ocrimagepdf • topdf • pdftotiff • pdfprops • mergetiff • mergetifftopdf • splittiff • tiffinfo • mergepdf • splitpdf • extracttext • optimizepdf • sharepointdownload • sharepointupload • compresspdf • pdftopdfa • getxmlpdf • ocranyfile • barcode • highavailability

10.1.2 Split Parameters [used with splittiff and splitpdf operations]

Parameter	Notes				
/splitby	Pages, ranges, repeatingrange, bookmarks (PDF Only)				
/splitrange	<p>Set of page ranges separated by commas that defines which pages from the original should be extracted. The following types of page ranges are allowed :</p> <table><tr><td>1</td><td>Specifies a single page</td></tr><tr><td>1-3</td><td>Specifies a range of pages</td></tr></table>	1	Specifies a single page	1-3	Specifies a range of pages
1	Specifies a single page				
1-3	Specifies a range of pages				
/splitrepeatingrange	<p>Apply the page range to each set of <i>Page Ranges</i> pages within the document. For example if 2-4 is specified for page ranges, and 4 is specified as the repeating range, then the range is re-applied every 4 pages.</p> <p>Hence the file is split such that the first output file contains pages 2-4 from the original document, the second contains pages 6-8 and so on.</p>				

10.1.3 Conversion Settings [used with tifftopdf and ocrimagepdf operations]

Parameter	Notes
/pdfa	<p>When set to true, will produce a PDF/A-1b compliant PDF file.</p> <p>When set to 1, 2 or 3 it will produce PDF/A-1b, PDF/A-2b and PDF/A-3b compliant PDF files respectfully.</p>
/ocr	For tifftopdf, set to true if a searchable PDF is required.
/textpdf file	OCR, Error, Ignore, Pass through

10.1.4 PDF Conversion Options [used with topdf operations]

Parameter	Notes
/fileconversiontimeout	Limits the amount of time in seconds that can be spent on a conversion. A value of zero means wait indefinitely.
/Zoom	Sets printing zoom of the worksheet. The allowed value range is from 10 to 400.
/FitToPagesWide	Sets number of pages wide the worksheet will be scaled to. This property is ignored if the Zoom property is set.
/FitToPagesTall	Sets number of pages tall the worksheet will be scaled to. This property is ignored if the Zoom property is set.
/MergeAttachments	Set this flag to true if you want if you want converted pdf attachments to merged to the output pdf file. Otherwise the converted files will be merged back to the pdf.
/RetainPDFAttachment	Set this flag to true if you want the original attachments to be retained in the pdf file after they are merged. This flag only gets picked up if the MergeAttachments flag above is used.
/IncludeDocProps	Set this flag if you want the MS Office properties to be transferred to the target pdf document.
/HandoutOrder	Sets the handout order, this flag only applies to Power Point jobs. The possible values are: PRN_PP_HANDOUT_VERTICAL_FIRST, PRN_PP_HANDOUT_HORIZONTAL_FIRST
/PPOutPutType	Sets the output type, it only works with the PowerPoint files. The possible values are: Slides = PRN_PP_OUTTYPE_SLIDES Build slides = PRN_PP_OUTTYPE_BUILDSLIDES Two slides handouts = PRN_PP_OUTTYPE_TWOSLIDEHANDOUTS Three slides handouts = PRN_PP_OUTTYPE_THREESLIDEHANDOUTS Four slides handouts = PRN_PP_OUTTYPE_FOURSLIDEHANDOUTS Six slides handouts = PRN_PP_OUTTYPE_SIXSLIDEHANDOUTS Nine slides handouts = PRN_PP_OUTTYPE_NINESLIDEHANDOUTS Notes= PRN_PP_OUTTYPE_NOTESPAGES Outline = PRN_PP_OUTTYPE_OUTLINE
/PrintGraphics	Sets the graphics setting for printing. Print Full Resolution = PRN_PB_PRINT_GRAPHICS_HIGHRES Print Low Resolution = PRN_PB_PRINT_GRAPHICS_LOWRES Print Graphics = PRN_PB_PRINT_GRAPHICS_NONE
/convertbookmarks	For MS Word, convert bookmarks

/bookmarkdepth	<p>This property will take effect only when the <u>ConvertBookmarks</u> property is set to True. Numbers defining bookmark levels must be equal to or larger than one. Word style names must not repeat in the string. The string must not start or end with the delimiter. When this property is empty, the default style mapping (Heading one through nine will be mapped to level one through nine) will be used. Therefore, empty string is functionally equivalent to:</p> <p>Heading 1 1 Heading 2 2 Heading 3 3 Heading 4 4 Heading 5 5 Heading 6 6 Heading 7 7 Heading 8 8 Heading 9 9</p> <p>Note: If you use non-English version of Microsoft Word, then you may need to replace the word "Heading" with its localized version.</p>
/converthyperlinks	Sets the flag to indicate whether to convert Word hyperlinks to PDF hyperlinks.
/printallsheets	The flag that indicates whether to print all Excel worksheets or not.
/printbgcolor	For files printed via IE Sets the flag that indicates whether to print background color or not when printing.
/Printscale	For Visio files, sets the print scale
/ieheader	This property modifies Internet Explorer's header setting.
/iefooter	This property modifies Internet Explorer's footer setting.
/imagecompression	If you want a lossless image compression, use PRN_IMAGE_COMPRESS_ZIP (ZIP compression).
/imagedownsizing	If this property is set to True, then the resolution of images are reduced to the DPI value specified in the <u>ImageDownsizeResolution</u> property.
/imagejpegquality	The allowed value range is from 5 to 100 with 100 being the highest quality.
/imagedownsizeresolution	If the <u>ImageDownsizing</u> property is set to True, then the resolution of images are reduced to the DPI value specified in this property.
/fontembedding	The option PRN_FONT_EMBED_FULLSET (embedding fullset of font) will cause significant increase in PDF file size, especially for CJK font, and therefore not recommended. If you need to embed font, PRN_FONT_EMBED_SUBSET (embed subset of font) will be a better choice.
/fontsubstitution	For the PRN_FONT_SUBST_TABLE (use font substitution table) option, you need to configure the substitution table. The table is stored under the "Device Setting" section of the printer driver properties (can be accessed from Control Panel).
/fontembedatype0	This option is recommended if you have non-standard fonts like barcode font.
/margintop	Margin in Inches.
/marginbottom	Margin in Inches.

/marginleft	Margin in Inches.
/marginright	Margin in Inches.
/pagewidth	In Inches.
/pageheight	In Inches.
/paperorientation	PORTRAIT or LANDSCAPE
/papersize	Word does not use the paper size setting from printer driver. If you need to change the paper size, use this property instead. If you need to use a custom paper size, set this property to PRN_MSO_PAPER_CUSTOM, and set the <u>PageWidth</u> and <u>PageHeight</u> properties.
/ PrintColorType	<p>With this property, you can set the PowerPoint to print either with</p> <ul style="list-style-type: none"> • Color : PRN_PP_PRINT_COLOR • Grey scale: PRN_PP_PRINT_GRAYSCALE • Black and White : PRN_PP_PRINT_BLACK_AND_WHITE
/queuwaittimeout	Since PowerPoint cannot perform multiple conversions at the same time, each conversion request will be put into queue, and they are converted one at a time. A waiting print job will timeout if it waits for more than the value specified in QueueWaitTimeout property. Timeout value is in milliseconds. Set to zero if you want to wait indefinitely.
/disablescripdebugger	Enables/Disables Internet Explorer's script debugger. It is highly recommended that Internet Explorer's script debugger is turned off during printing so that PDF conversion process is not interrupted.
/DisplayErrorDialogOnEveryError	Enables/Disables Internet Explorer's error dialog displayed on every error. It is highly recommended that this feature is turned off from Internet Explorer so that PDF conversion process is not interrupted.
/pdfa	The output file will be PDF/A-1b compliant.
/pdfx1a	The output file will be PDF/X-1a compliant.
/pdfx3	The output file will be PDF/X-3 compliant.
/ConvertAttachments	For msg files, email attachments are processed so that the resulting PDF is composed of the email plus each page of each attachment.
/IncludeDocumentMarkups	The "Include Document Markups" option allows Word comments and markup to be included in the generated PDF.

10.1.5 PDF File Processing

Parameter	Notes
/retainmetadata	Retains PDF metadata
/retainbookmarks	Retains PDF bookmarks
/password	Source PDF password
/resolution	Sets the DPI of images in the output file (used with pdftotif).
/pdfdpi	Sets the DPI of images in the output file (used with ocrimagepdf)

10.1.6 OCR [used with ocrimagepdf or tifftopdf when searchable pdf has been chosen]

Parameter	Notes																																				
Parameter	Notes																																				
/deskew	Straightens the image																																				
/despeckle	Removes dots below the specified pixel size																																				
/autorotate	Rotates the page image if required																																				
/language	OCR Language dictionary to be used. The default is English. <table border="1"> <thead> <tr> <th>LANGUAGE</th><th>/language Flag Value</th></tr> </thead> <tbody> <tr><td>English</td><td>0</td></tr> <tr><td>German</td><td>1</td></tr> <tr><td>French</td><td>2</td></tr> <tr><td>Russian</td><td>3</td></tr> <tr><td>Swedish</td><td>4</td></tr> <tr><td>Spanish</td><td>5</td></tr> <tr><td>Italian</td><td>6</td></tr> <tr><td>Russian English</td><td>7</td></tr> <tr><td>Ukrainian</td><td>8</td></tr> <tr><td>Serbian</td><td>9</td></tr> <tr><td>Croatian</td><td>10</td></tr> <tr><td>Polish</td><td>11</td></tr> <tr><td>Danish</td><td>12</td></tr> <tr><td>Portuguese</td><td>13</td></tr> <tr><td>Dutch</td><td>14</td></tr> <tr><td>Czech</td><td>15</td></tr> <tr><td>Roman</td><td>16</td></tr> </tbody> </table>	LANGUAGE	/language Flag Value	English	0	German	1	French	2	Russian	3	Swedish	4	Spanish	5	Italian	6	Russian English	7	Ukrainian	8	Serbian	9	Croatian	10	Polish	11	Danish	12	Portuguese	13	Dutch	14	Czech	15	Roman	16
LANGUAGE	/language Flag Value																																				
English	0																																				
German	1																																				
French	2																																				
Russian	3																																				
Swedish	4																																				
Spanish	5																																				
Italian	6																																				
Russian English	7																																				
Ukrainian	8																																				
Serbian	9																																				
Croatian	10																																				
Polish	11																																				
Danish	12																																				
Portuguese	13																																				
Dutch	14																																				
Czech	15																																				
Roman	16																																				

	<table><tr><td>Hungar</td><td>17</td></tr><tr><td>Bulgar</td><td>18</td></tr><tr><td>Slovenian</td><td>19</td></tr><tr><td>Latvian</td><td>20</td></tr><tr><td>Lithuanian</td><td>21</td></tr><tr><td>Estonian</td><td>22</td></tr><tr><td>Turkish</td><td>23</td></tr></table>	Hungar	17	Bulgar	18	Slovenian	19	Latvian	20	Lithuanian	21	Estonian	22	Turkish	23
Hungar	17														
Bulgar	18														
Slovenian	19														
Latvian	20														
Lithuanian	21														
Estonian	22														
Turkish	23														
/graphicsproc	<p>“all” : Treat all Graphics Areas as Text.</p> <p>“box” : Remove Box Lines in OCR Processing.</p>														
/extractimages	<p>One of the following :</p> <ul style="list-style-type: none">• Auto – TIFF Junction will select the most appropriate method.• Convert to TIFF – The PDF is rasterized using conversion to PDF.• Native														
/PDFDPI	An integer value representing the resolution of the rasterized Tiff file if “Convert to TIFF” is used above.														
/mrc	This enables Mixed Raster Compression which can dramatically reduce the output size of PDFs comprising color scans. Note that this option cannot be used in conjunction with the “Native” Image Method for OCRing PDFs as the Native method does not adjust the images within the PDF.														
/JBIG2	This is a compression used for Bitonal images.														
/OCRTextFile	<p>This option tells Autobahn DX that text found in the document should also be written to a text output file. The output file can be of 4 different types, use the “/TextFile” flag below to specify.</p> <ul style="list-style-type: none">• true: produce text output• false: do not produce text output														
/TextFile	<p>This flag must be used together with the “/OCRTextFile” flag above, it specifies the type of text file to be produced</p> <table><tr><th>Value</th><th>Output files</th></tr><tr><td>“plain text”</td><td>txt, pdf</td></tr><tr><td>“plain text (no pdf)”</td><td>txt only</td></tr><tr><td>“rtf”</td><td>rtf, pdf</td></tr><tr><td>“html”</td><td>html, pdf</td></tr></table>	Value	Output files	“plain text”	txt, pdf	“plain text (no pdf)”	txt only	“rtf”	rtf, pdf	“html”	html, pdf				
Value	Output files														
“plain text”	txt, pdf														
“plain text (no pdf)”	txt only														
“rtf”	rtf, pdf														
“html”	html, pdf														
/optimiseocr	See section 12.2 for a full explanation of this option.														

10.1.7 PDF Output File Settings – [used with pdfprops]

Parameter	Notes																				
/userpassword	Sets the user password for the output document																				
/ownerpassword	Sets the owner document for the output document.																				
/permissions	<p>A comma separated list of document permissions</p> <table> <tr> <th>Permission</th><th>Description</th></tr> <tr> <td>allowprinting</td><td>Allow high-quality printing</td></tr> <tr> <td>allowmodifycontents</td><td>Allow assembly (see below) and other document medications</td></tr> <tr> <td>allowcopy</td><td>Allow text and graphic copying and extraction</td></tr> <tr> <td>allowmodifyannotations</td><td>Allow modification of annotations</td></tr> <tr> <td>allowfillin</td><td>Allow filling of form fields</td></tr> <tr> <td>allowscreenreaders</td><td>Allow extraction of text and graphics in support of accessibility.</td></tr> <tr> <td>allowassembly</td><td>Allow rotation, insertion or deletion of pages.</td></tr> <tr> <td>allowdegradedprinting</td><td>Allow low-quality printing</td></tr> <tr> <td>allowall</td><td>Allow all the permissions</td></tr> </table>	Permission	Description	allowprinting	Allow high-quality printing	allowmodifycontents	Allow assembly (see below) and other document medications	allowcopy	Allow text and graphic copying and extraction	allowmodifyannotations	Allow modification of annotations	allowfillin	Allow filling of form fields	allowscreenreaders	Allow extraction of text and graphics in support of accessibility.	allowassembly	Allow rotation, insertion or deletion of pages.	allowdegradedprinting	Allow low-quality printing	allowall	Allow all the permissions
Permission	Description																				
allowprinting	Allow high-quality printing																				
allowmodifycontents	Allow assembly (see below) and other document medications																				
allowcopy	Allow text and graphic copying and extraction																				
allowmodifyannotations	Allow modification of annotations																				
allowfillin	Allow filling of form fields																				
allowscreenreaders	Allow extraction of text and graphics in support of accessibility.																				
allowassembly	Allow rotation, insertion or deletion of pages.																				
allowdegradedprinting	Allow low-quality printing																				
allowall	Allow all the permissions																				
/strength	Set to 128 to make use of security settings																				
/author	Sets the PDF information dictionary value.																				
/title	“																				

/subject	“
/keywords	“
/creator	“
/pagelayoutSinglepage	Single Page (SinglePage)
/pagelayoutContinuous	Continuous(OneColumn)
/pagelayoutContinuousfacingleft	ContinuousFacing [odd pages left] (TwoColumnLeft)
/pagelayoutContinuousfacingright	ContinuousFacing [odd pages right] (TwoColumnRight)
/pagemodeusenone	No Thumbnails or Bookmarks Visible (UseNone)
/pagemodeuseoutlines	Bookmarks Visible (Use Outlines)
/pagemodeusethumbs	Thumbnails Visible (UseThumbs)
/pagemodefullscreen	Full Screen Mode (FullScreen)
/hidetoolbar	The viewer’s tool bar will be hidden
/hidemenubar	The viewer’s menu bar will be hidden
/hidewindowui	The viewer’s UI elements (scrollbars etc.) will be hidden
/fitwindow	The viewer will resize the document’s window to fit the size of the first displayed page.
/centerwindow	The document window will be positioned in the center of the screen.
/nonfullscreenpagemodeusenone	On exiting full screen mode, neither outline nor thumbnail images are shown.
/nonfullscreenpagemodeuseoutline	On exiting full screen mode outlines are visible.
/nonfullscreenpagemodeusethumbs	On exiting full screen mode thumbnails are visible.

10.1.8 Sharepoint Settings – [used with sharepointdownload and sharepointupload]

Parameter	Notes
-----------	-------

/s	Site URL, the URL of the SharePoint site that you want to access, e.g. http://localhost/testsite
/l	Library, the name of the library that you want to access, e.g. "Test Library"
/k	The subfolder in the library to download from or upload to.
/f	The local folder to download documents to or upload document from.
/e	An optional extension mask that limits those files to manipulate, e.g. "pdf,tif"
/r	If set to "True" sub-folders of the Sharepoint Library are handled.
/a	The action: <ul style="list-style-type: none"> • Download: /a=0 • Upload: /a=1
/u	The username used to connect to the SharePoint site.
/p	The password (encrypted) used to connect to the SharePoint site.
/o	Set this if the site is in office 365
/c	Continue processing if an error occurs.

10.1.9 Compress PDF Settings – [used with compresspdf]

Parameter	Notes
/mrcq	JPEG quality setting (percentage value 1 - 100) for use in saving the background and foreground images. Default value is 75
/mrcb	Sampling size for the background portion of the image. The higher the number, the larger the size of the image blocks used for averaging which will result in a reduction in size but also quality. Default value is 3
/mrcf	Sampling size for the foreground portion of the image. The higher the number, the larger the size of the image blocks used for averaging which will result in a reduction in size but also quality. Default value is 3
/advancedflags	<p>A number of advanced flags are available for use under guidance from Aquaforest technical support. Contact support@aquaforest.com if needed.</p> <p>/pdfa or /pdfa=1 – convert the compressed document to PDF/A1b format /pdfa=2 – convert the compressed document to PDF/A2b format /pdfa=3 – convert the compressed document to PDF/A3b format /nojb2 – use G4 fax compression rather than JBIG2 for bitonal images /debug – generate additional informational messages /allowtext – allow PDFs containing text to be processed</p>

10.1.10 Extended Steps

See [Section 14.3](#)

10.1.11 Create XML Property File – [used with getxmlpdf]

Parameter	Notes
/CopyPDF	Value is true or false, setting this to true will copy the pdf source to the target folder.

10.1.12 OCR Any File to PDF– [used with ocranyfile]

This uses the flags in section [10.1.4](#) and [10.1.6](#)

10.1.13 TIFF/PDF Barcode – [used with barcode]

Command Line	Description
/ SplitByBarcode (bool)	Choose this option to split the PDF/TIFF file by Barcode
/RenameByBarcode (bool)	Choose this option to rename the PDF file based on Barcode.
/BarcodeFormats	Barcode formats supported. See table below for more explanation
/ ExcludedBarcodeFormats	Barcode formats not supported.
/SplitMode (bool)	Various Options for splitting Files by Barcode
/ TryHarder (bool)	Spend more time to try to find a barcode; optimize for accuracy, not speed. Default is true.
/SplitOutputPath (string)	The output file path template where the split files will be saved. - %VALUE%: Replaced by the barcode value found. - %INDEX%: Replaced by the current split index. - %FILENAME : Replaced by the file name
/SplitNoBarcodeTemplate (string)	The renaming template to use for page ranges where no barcodes were identified. Allowed templates: - %INDEX%; Replaced by the current split index. - %FILENAME: Replaced by the filename of the source file.
/Binarize	Switch this on if your input files are coloured, it first converts it to black and white before conversion.
/RemoveLines (float)	Remove lines from images. Value = 100.5
/Zones (string)	Only examine the region specified for barcode(s). Values =left(int), top(int), width(int), height(int) e.g. /Zones= 5,10,200,200
/BoxSize	This option is ideal for forms where sometimes boxes around text can cause an area to be identified as graphics. This option removes boxes from the temporary copy of the imaged

	used by the barcode reader. Technically, this option removes connected elements with a minimum area (in pixels and defined by this property). This option is currently only applied for bitonal images.
/PdfToImageCompression	PDF files get converted to TIFF files before the barcode are recognized, this flag represents the compression of the TIFF file. "CCITT4" or "LZW"
/PdfToImageDpi	PDF files get converted to TIFF files before the barcode are recognized, this flag represents the DPI of the TIFF file. 150,200,300
/Deskew (bool)	Deskew (straighten) the image. The default value is false
/ Despeckle (int)	Removes specks below the specified pixel size from the image. The default value is 0 and the maximum value is 9.
/ TempFolder (string)	This flag can be used to specify a temp location where the processing will be carried out.
/EndPage (int)	The page you want to start recognizing the barcode.
/StartPage (int)	The page you want to start recognizing the barcode.
/ BlankPageThreshold (int)	Any page with black pixels lower than the threshold set will be ruled as a blank page.
/ReadMultipleBarcodes (bool)	This is used to read multiple barcodes in a single page
/Morph	Morphological options that will be applied to the binarized image before OCR. If set to empty none is applied. Common options include those listed below but for more options please contact support@aquaforest.com: - d2.2 – 2x2 dilation applied to all black pixel areas, useful for faint prints. - e2.2 – 2x2 erosion applied to all black pixel areas, useful for heavy prints. - c2.2 – closing process that performs a 2x2 dilation followed by a 2x2 erosion with the result that holes and gaps in the characters are filled. This option should generally only be used under guidance from technical support.
/ PInvoke (bool)	Setting this to true will use PInvoke to create new processes.

/ ProductsOnly	Only decode the UPC and EAN families of barcodes.
/ LibTiffSavePageAsBmp	Sometimes if there is an image which is 1bpp and has LZW compression, the pre-processing can cause the colour of the image to be inverted (black to white and white to black). Set this to true to avoid this.

11 AUTOBAHN DX .NET API

An API is provided which allows a .Net application to allow execution of existing job definitions and creation “on the fly” of new jobs from XML Job Ticket files. The API DLL is located in the AUTOBAHN\bin folder and a sample Visual Studio 2008 project is provided in the AUTOBAHN \code examples\AutobahnAPIExample folder where AUTOBAHN is the folder where Autobahn DX has been installed – by default this is C:\Aquaforest\Autobahn DX.

11.1 API Example (Local Job)

```
using System;
using System.Threading;
using Aquaforest.Autobahn.API;

namespace ConsoleApplication2
{
    class Class1
    {
        [STAThread]
        static void Main(string[] args)
        {
            IJob job = null;
            string JobFinished;
            string Jobstatus;
            try
            {
                /* Run Job and Wait to Complete */

                job = new Job(1001);
                job.Start();
                job.WaitForExit();
                JobFinished=job.JobFinished();
                Jobstatus=job.Jobstatus();

                if(Jobstatus=="Error")
                {
                    Console.WriteLine("Job Failed");
                }
                else if(Jobstatus=="Stopped")
                {
                    if(JobFinished=="True")
                        Console.WriteLine("Job Completed");
                    else
                        Console.WriteLine("Job Was Terminated");
                }
                job.Dispose();

                /* Run Job and allow 10 seconds to Complete */

                job = new Job(1001);
                job.Start();
                job.WaitForExit(10000);
                JobFinished=job.JobFinished();
                Jobstatus=job.Jobstatus();

                if(Jobstatus=="Error")
                {
                    Console.WriteLine("Job Failed - Check Job Log for Details");
                }
            }
        }
    }
}
```

```

        else if(Jobstatus=="Stopped")
        {
            if(JobFinished=="True")
                Console.WriteLine("Job Completed");
            else
                Console.WriteLine("Job Was Terminated due to
Timeout");
        }
        job.Dispose();
    }
    catch (Exception oExp)
    {
        Console.WriteLine(oExp.Message);
        Console.ReadLine();
    }
}
}

```

11.2 API Example (Remote Job)

If you have remote access to the machine where autobahn is installed, you can use the API to invoke jobs remotely.

```

using System;
using System.Threading;
using Aquaforest.Autobahn.API;
namespace AutobahnRemoteAPIExample
{
    internal class Program
    {
        private static int Main(string[] args)
        {
            IJob loJob = null;
            Console.WriteLine("Enter the Job ID Below.");
            int liJobID = ParseInt(Console.ReadLine()); // Read Job ID To Run

            Console.WriteLine("Enter the Job Timeout in Ms (The job will exit
if this value elapses in)");
            int liTimeOut = ParseInt(Console.ReadLine()); // MS to wait (0 to
wait until job completion)
            /*
             * Parse the location of the config file.
             * If you want to use the "Autobahn.config" in this project, follow
the steps below.
             * 1. Replace all the "remotehost" values with the host name of the
remote machine.
             * 2. Change the "remote.port" value to the port number of the ADX
instance running on the remote machine.
             * you can find this in the config file of ADX on the remote
machine in "ADXInstallation\config\autobahn.config"
             */
            Console.WriteLine("The location of the config file.");
            string configFile = Console.ReadLine();
            int liRetVal = 0;

            try
            {

```

```

        loJob = new Job(liJobID, configFile);

        loJob.Start();

        if (liTimeOut > 0)
        {
            loJob.WaitForExit(liTimeOut);
        }
        else
        {
            loJob.WaitForExit();
            Console.WriteLine("Job execution finished:" +
loJob.JobFinished());
            Console.WriteLine("Exit code is:" + loJob.Jobstatus());
        }

        if (loJob.Jobstatus().ToUpper().Equals("ERROR"))
        {
            liRetVal = -1;
        }
        else if (loJob.Jobstatus().ToUpper().Equals("STOPPED"))
        {
            if (loJob.JobFinished().ToUpper().Equals("TRUE"))
            {
                liRetVal = 0;
            }
            else
            {
                liRetVal = -1;
            }
        }
    }
    catch (Exception oExp)
    {
        liRetVal = -1;
        Console.WriteLine(oExp.Message);
    }
    finally
    {
        if (loJob != null)
        {
            loJob.Dispose();
        }
    }
    Console.WriteLine(liRetVal.ToString());
    Console.ReadLine();
    return liRetVal;
}

private static int ParseInt(string psValue)
{
    try
    {
        return int.Parse(psValue);
    }
    catch
    {
        ///---[ Ignore ]---
    }
    return 0;
}
}
}
}

```

Constructors	public Job(int jobid) <i>Create Job object using an existing jobid.</i>
	public Job(string jobdeffile) <i>Create Job object using a temporary job definition file.</i>
	public Job(int jobid,string config) <i>Create Job object using an existing jobid and config file of with the configuration of the remote machine</i>
	public Job(string jobdeffile,string config) <i>Create Job object using a temporary job definition file and config file of with the configuration of the remote machine</i>
Methods	public Start() <i>Starts the Job.</i>
	public void WaitForExit(int ms) <i>Waits for the job to exit, for up to ms milliseconds. The job is stopped if it has not completed.</i>
	public void WaitForExit() <i>Waits indefinitely for the job to compete.</i>
	public virtual void Dispose() <i>Disposes of the resources associated with the Job.</i>
	Public string Jobstatus() <i>Returns the status of the job which may be either Stopped or Error. This should be checked in conjunction with the value of JobFinished() to determine whether the job completed before being stopped.</i>
	Public string JobFinished() <i>Indicates whether the job has completed (return value True) or has been stopped (return value False) as a result of timeout being exceeded.</i>
	Public void ClearError(string JobStatusPath) When a job is error, ClearError(string jobstatusPath) will clear the error job and set the job status to stopped.

12 OCR PROPERTIES FILE AND THE ADVANCE PRE PROCESSING OPTION

12.1 Properties File

The following are descriptions of those properties in the file Properties.xml that are most likely to be changed to improve engine performance. If you require further information regarding any properties in the file then please contact Aquaforest via support@aquaforest.com for assistance.

Binarize – This setting determines how the image will be converted into a bitonal one for OCR. The following are valid options:

- 1 – This utilizes a technique whereby those parts of the image that have certain characteristics indicative of characters are extracted from the underlying image. This approach can give the best results on pages such as magazine images, news print, etc and will handle light text on darker backgrounds. This approach can cause an increase in processing time with certain images.
- 0 – This utilizes the binarization capabilities built into the OCR engine and whilst it can give good results in limited situations it is not generally recommended.
- >0 – A value greater than 0 (the recommended default is 200) will use a simple threshold technique comparing the intensity of the pixel to the threshold value to determine whether it should be set to black or white. This simple approach is the fastest option.

BoxSize – Setting a value above 0 will cause the removal of enclosing boxes from the image used for the OCR processing. The default recommended is 100, i.e. where the box edges are 100 pixels or greater.

BackgroundFactor - Sampling size for the background portion of the image. The higher the number, the larger the size of the image blocks used for averaging which will result in a reduction in size but also quality. Default value is 3

DotMatrix - Set this to True to improve recognition of dot-matrix fonts. Default value is False. If set to true for non dot-matrix fonts then the recognition can be poor

ForegroundFactor - Sampling size for the foreground portion of the image. The higher the number, the larger the size of the image blocks used for averaging which will result in a reduction in size but also quality. Default value is 3

Jbig2EncFlags – These are the flags that will be passed to the application used to generate JBIG2 versions of images used in PDF generation (assuming this compression is enabled). Options are as follows:

- b <basename>: output file root name when using symbol coding
- d --duplicate-line-removal: use TPGD in generic region coder
- p --pdf: produce PDF ready data
- s --symbol-mode: use text region, not generic coder
- t <threshold>: set classification threshold for symbol coder (def: 0.85)
- T <bw threshold>: set 1 bpp threshold (def: 188)

-r --refine: use refinement (requires -s: lossless)
-O <outfile>: dump thresholded image as PNG
-2: upsample 2x before thresholding
-4: upsample 4x before thresholding
-S: remove images from mixed input and save separately
-j --jpeg-output: write images from mixed input as JPEG
-v: be verbose

Language – The acceptable vales are as follows:

0 - English
1 - German
2 - French
3 - Russian
4 - Swedish
5 - Spanish
6 - Italian
7 - Russian English
8 - Ukrainian
9 - Serbian
10 - Croatian
11 - Polish
12 - Danish
13 - Portuguese
14 - Dutch
19 - Czech
20 - Roman
21 - Hungar
22 - Bulgar
23 - Slovenian
24 - Latvian
25 - Lithuanian
26 - Estonian
27 - Turkish

MaxDeskew – Maximum angle by which a page will be deskewed

Morph – Morphological options that will be applied to the binarized image before OCR. If left blank none is applied. Common options include those listed below but for more options please contact support@aquaforest.com:

d2.2 – 2x2 dilation applied to all black pixel areas, useful for faint prints.
e2.2 – 2x2 erosion applied to all black pixel areas, useful for heavy prints.
c2.2 – closing process that performs a 2x2 dilation followed by a 2x2 erosion with the result that holes and gaps in the characters are filled.

NoPictures - By default, if an area of the document is identified as a graphic area then no OCR processing is run on that area. However, certain documents may include areas or boxes that are identified as “graphic” or “picture” areas but that actually do contain useful text. Setting NoPictures to True will cause it to ignore areas identified as pictures whilst setting it to False will force OCR of areas identified as pictures.

OneColumn - The default value for this is true which improves the handling of single column text. Better handling of multi-column text such as magazine or news print can be achieved.

PdfToImage – The SDK ships with two engines for the conversion of PDF pages to images for OCR. The default engine is used when this is set to 0 but if certain PDF source documents are proving problematic then the alternate engine can be used by changing this value to 1.

PdfToImageIncludeText – When set to False this will prevent the conversion of real text (i.e. electronically generated as opposed to text that is part of a scanned image) from being rendered in the page images extracted from the PDF. This is because the text is already searchable and so generally does not require OCR. The value can be set to True however if the OCR is required on this real text.

Quality - JPEG quality setting (percentage value 1 - 100) for use in saving the background and foreground images. Default value is 75

RemoveLines – The value used in Line removal. If blank no line removal will occur. The normal value to use to enable line removal is 100.5 but if you are experience difficulties with this value or have any questions then please contact support@aquaforest.com.

12.2 Advance Pre Processing

This option can be used to run each page OCR with 2 or more different settings and then chose the best set of results.

When the /optimiseocr is specified in the advanced flag field. The OCR and image processing engines will use the settings in the ImagePreProcessingDefaults section of the file Properties.xml modified by any properties set on the OCR and PreProcessing objects.

This will enable the use of these default settings first (without modification by the properties set on the OCR and PreProcessing objects) followed by the same defaults modified by the values in the ImagePreProcessing sections from ID="1" to ID="n" where n is the last consecutive set defined in Properties.xml.

Using heuristics and dictionary lookup the quality of the OCR output is then compared in order to determine the optimum set to output. In this way it is possible to define different sets of OCR and pre-processing conditions that are suited to different types of source documents. This approach can also improve the handling of documents that contain different types of pages, e.g. scanned at different qualities, containing different languages, containing standard and dot matrix prints, etc.

Sample Section of Properties.xml

```
<ImagePreProcessing ID="1">
  <Binarize>-1</Binarize>
  <Morph>c2.2</Morph>
</ImagePreProcessing>
<ImagePreProcessingDefaults>
  <RemoveLines></RemoveLines>
  <Binarize>200</Binarize>
```

```

<BlackPixelLimit>0.65</BlackPixelLimit>
<BoxSize>0</BoxSize>
<GrayscaleQuality>0</GrayscaleQuality>
<Jbig2EncFlags>-s</Jbig2EncFlags>
<Language>0</Language>
<MaxDeskew>10</MaxDeskew>
<MinDeskewConfidence>3.0</MinDeskewConfidence>
<Morph></Morph>
<Mrc>
  <ForegroundFactor>3</ForegroundFactor>
  <BackgroundFactor>3</BackgroundFactor>
  <Quality>75</Quality>
</Mrc>
<Ocr>
  <DotMatrix>False</DotMatrix>
  <OneColumn>False</OneColumn>
  <NoPictures>False</NoPictures>
  <Tables>False</Tables>
</Ocr>
<PdfImageExtraction>
  <PdfToImage>0</PdfToImage>
  <PdfToImageMinRes>200</PdfToImageMinRes>
  <PdfToImageMaxRes>300</PdfToImageMaxRes>
  <PdfToImageIncludeText>False</PdfToImageIncludeText>
</PdfImageExtraction>
<RemoveLines></RemoveLines>
<SavePredespeckle>False</SavePredespeckle>
<TextLayerExtraction>
  <MaxBoxes>0</MaxBoxes>
  <FilterWidth>130</FilterWidth>
  <FilterHeight>130</FilterHeight>
  <FilterRatio>1</FilterRatio>
  <FilterPercentage>0.6</FilterPercentage>
  <FilterWidthInverted>40</FilterWidthInverted>
  <FilterHeightInverted>40</FilterHeightInverted>
  <FilterRatioInverted>0.95</FilterRatioInverted>
  <FilterPercentageInverted>0.5</FilterPercentageInverted>
</TextLayerExtraction>
</ImagePreProcessingDefaults>

```

13 THE MERGE FLAG FEATURE

This feature is used to give the user a certain level of control over which folders to be included in the merge operations ("Merge Tiffs", "Merge PDF", "Merge Tiffs to PDF" and "Extended Merge Tiffs to PDF"). It provides the user with a mechanism of flagging folders that are to be included for processing.

To use this feature, the following steps need to be followed:

- Choose a name you want to set as the flag name. For instance, "_ready".
- Open Autobahn.config file located at "<InstallDirectory>\Autobahn DX\config\" and change the value of `<add key="mergeflag" value="" />` to `<add key="mergeflag" value="ready.adx.merge" />`.

Note: The file extension must be ".adx.merge" for this to work.*

- Next create the 0 size byte file named "_ready.adx.merge" and copy and paste in each folder that requires processing.
- Restart the service to load the new configuration.

Note: restarting the service will cause all jobs that are running through the job manager to terminate.

14 EXTENDED OCR MODULE

The optional Extended OCR module extends Autobahn DX 3.0 with an additional OCR engine and has the following benefits over and above the standard Aquaforest OCR engine:

- IRIS OCR Engine providing enhanced recognition
- New PDF Rasterizer component
- DOCX Output option
- Improved RTF Output
- CSV and SpreadsheetML output options
- Additional Western Language Support (see [section 15.3](#) for details)
- Optional Asian Language Support
- Support for multiple languages within a single document from the same alphabet - e.g. French + German + Italian

14.1 Trial Licensing

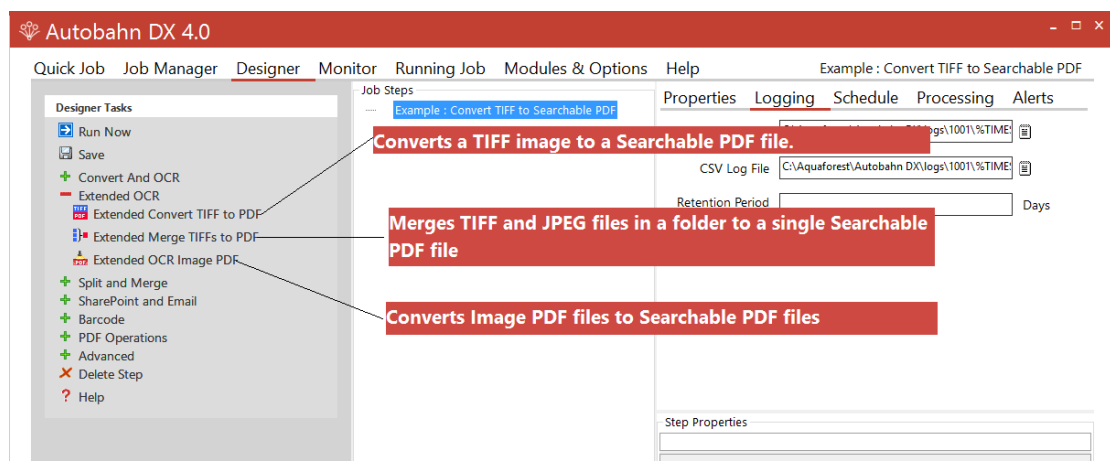
The Extended OCR Module for Autobahn DX is licensed as an optional module and is not enabled by default in the trial version of the product.

To evaluate the module you can enter EXTENDED OCR TRIAL as the license key under the “Modules and Licensing” tab. To evaluate the Asian OCR capabilities, enter EXTENDED OCR ASIAN TRIAL.

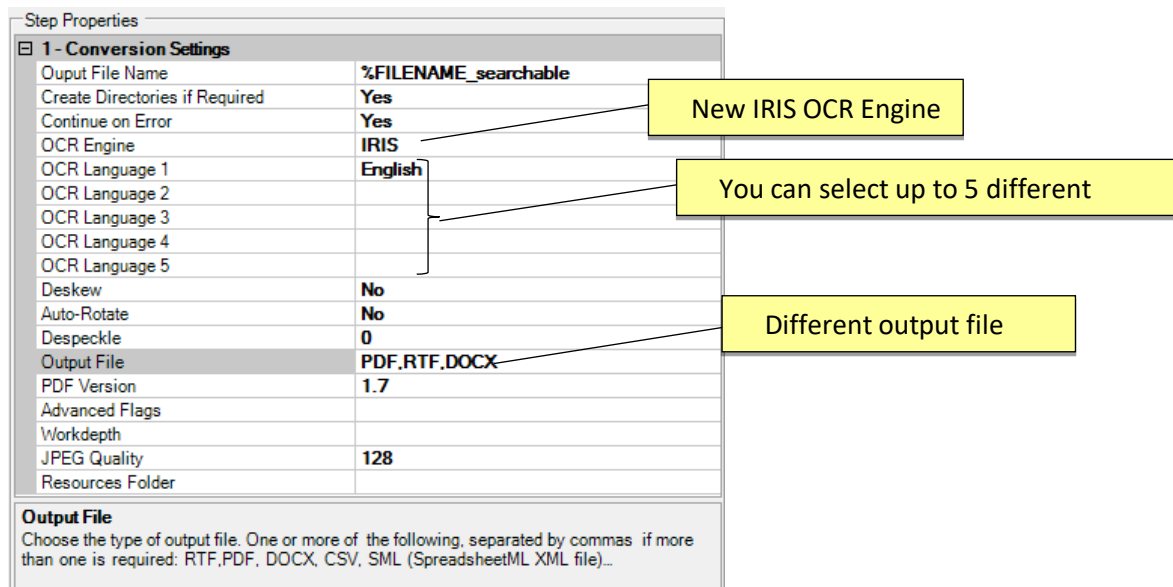
14.2 New Job Manager Steps

The Extended OCR Module provides the following three new job steps:

- Extended Convert TIFF to PDF
- Extended Merge TIFFs to PDF
- Extended OCR Image PDF



These job steps mirror the default equivalents (Convert TIFF to PDF etc.) but will have some different options (e.g. different language and output formats) as shown below.



14.3 Extended Command Line Interface

The Autobahn DX command line interface has been enhanced to support the new Extended OCR module. **Using /ocrengine=1 as a parameter is a requirement.**

```
autobahndx.exe /operation=[operation name] /source=[tiff file or folder]
/output=[output file] /target=[target folder] [/option=value]...
```

Examples

1. Generate a searchable PDF c:\out\outfile.pdf and a Word file c:\out\outfile.docx from a multi-page TIFF file

```
autobahndx.exe /source=c:\in\in.tif /sourcetype=file /target=c:\out /output=outfile
/outputtype=pdf,docx /operation=tifftopdf /ocrengine=1
```

2. Generate a searchable PDF file from a folder of TIFF and JPEG files, with Deskew and page orientation detection and correction.

```
autobahndx.exe /source=c:\in\folder /sourcetype=folder /target=c:\out /output=outfile
/outputtype=pdf /autorotate /deskew /operation=mergetifftopdf /ocrengine=1
```

3. Generate searchable PDF files from image PDF files found in a folder and subfolders, while keeping the original file names.

```
autobahndx.exe /source=c:\in\folder /sourcetype=tree /target=c:\out
/output=%FILENAME /outputtype=pdf operation=ocrimagepdf /ocrengine=1
```

The three new Extended OCR options use the parameters listed in the table below.

Parameter	Notes
/operation	The operation that needs to be carried out: <ul style="list-style-type: none"> • tifftopdf • mergetifftopdf • ocrimagepdf
/ocrengine	The OCR engine to use. This <u>must</u> be set to 1 to use the IRIS engine. /ocrengine=1
/source	Source file or folder
/sourcetype	File (default) or Folder
/target	The Target folder
/output	The output filename excluding the extension (which will be added according to the output file type).
/outputtype	One or more of the following, separated by commas if more than one is required. RTF PDF DOCX CSV* SML (SpreadsheetML XML file)* HTM TXT *These output formats are suitable for table-oriented pages that can be mapped onto a spreadsheet format.
/ExtractImages	Whether to convert the images in a PDF document to TIFF or not. <ul style="list-style-type: none"> • Convert to TIFF – The pages in the PDF document are rasterized and saved as TIFF images • Native - This method places the OCR'ed text directly into a copy of the original PDF rather than creating an entirely new PDF.
/Autorotate	Detect page orientation and correct if required
/RemoveBlankPage	Set this to true to remove blank pages from Tiff or PDF documents. A value needs to be set for sensitivity (see below).

/Sensitivity	The sensitivity, from 1 to 100. With a high sensitivity, less blank pages are detected.																																				
/Deskew	Rotates the image to correct its skew angle.																																				
/Despeckle	Removes all the groups of connected pixels with a number of pixels below the parameter. Suggested range: 1-20.																																				
/Workdepth	This parameter (0 – 255) defines how deeply the OCR engine will analyze a page with 255 being the deepest. For poorer quality documents, higher values can give better recognition results.																																				
/JPEGQuality	This parameter (0 – 255) determines the compression/quality of color JPEG images in generated PDFs. 0 gives the smallest file size whilst 255 gives the best quality. The default value is 128.																																				
/PDFVersion	This determines the PDF version of the generated PDF : 1.4 1.5 1.6 1.7 PDF/A1B (<i>PDF/A-1b</i>)																																				
/language	Determines the language to be used for OCR. This may be a comma separated list for multiple languages e.g. /language=1, 2 for German and French. Note that these codes are not the same as those used by the default Aquaforest engine. <table> <thead> <tr> <th>Language</th><th>Code</th></tr> </thead> <tbody> <tr><td>ENGLISH(Default)</td><td>0</td></tr> <tr><td>GERMAN</td><td>1</td></tr> <tr><td>FRENCH</td><td>2</td></tr> <tr><td>SPANISH</td><td>3</td></tr> <tr><td>ITALIAN</td><td>4</td></tr> <tr><td>BRITISH</td><td>5</td></tr> <tr><td>SWEDISH</td><td>6</td></tr> <tr><td>DANISH</td><td>7</td></tr> <tr><td>NORWEGIAN</td><td>8</td></tr> <tr><td>DUTCH</td><td>9</td></tr> <tr><td>PORTUGUESE</td><td>10</td></tr> <tr><td>BRAZILIAN</td><td>11</td></tr> <tr><td>GALICIAN</td><td>12</td></tr> <tr><td>ICELANDIC</td><td>13</td></tr> <tr><td>GREEK</td><td>14</td></tr> <tr><td>CZECH</td><td>15</td></tr> <tr><td>HUNGARIAN</td><td>16</td></tr> </tbody> </table>	Language	Code	ENGLISH(Default)	0	GERMAN	1	FRENCH	2	SPANISH	3	ITALIAN	4	BRITISH	5	SWEDISH	6	DANISH	7	NORWEGIAN	8	DUTCH	9	PORTUGUESE	10	BRAZILIAN	11	GALICIAN	12	ICELANDIC	13	GREEK	14	CZECH	15	HUNGARIAN	16
Language	Code																																				
ENGLISH(Default)	0																																				
GERMAN	1																																				
FRENCH	2																																				
SPANISH	3																																				
ITALIAN	4																																				
BRITISH	5																																				
SWEDISH	6																																				
DANISH	7																																				
NORWEGIAN	8																																				
DUTCH	9																																				
PORTUGUESE	10																																				
BRAZILIAN	11																																				
GALICIAN	12																																				
ICELANDIC	13																																				
GREEK	14																																				
CZECH	15																																				
HUNGARIAN	16																																				

	POLISH	17
	ROMANIAN	18
	SLOVAK	19
	CROATIAN	20
	SERBIAN	21
	SLOVENIAN	22
	LUXEMB	23
	FINNISH	24
	TURKISH	25
	RUSSIAN	26
	BYELORUSSIAN	27
	UKRAINIAN	28
	MACEDONIAN	29
	BULGARIAN	30
	ESTONIAN	31
	LITHUANIAN	32
	AFRIKAANS	33
	ALBANIAN	34
	CATALAN	35
	IRISH_GAELIC	36
	SCOTTISH_GAELIC	37
	BASQUE	38
	BRETON	39
	CORSICAN	40
	FRISIAN	41
	NYNORSK	42
	INDONESIAN	43
	MALAY	44
	SWAHILI	45
	TAGALOG	46
	JAPANESE	47 *Requires the Asian OCR option
	KOREAN	48 *Requires the Asian OCR option
	SCHINESE	49 *Requires the Asian OCR option
	TCHINESE	50 *Requires the Asian OCR option
	QUECHA	51
	AYMARA	52
	FAROESE	53
	FRIULIAN	54
	GREENLANDIC	55
	HAITIAN_CREOLE	56
	RHAETO_ROMAN	57
	SARDINIAN	58
	KURDISH	59
	CEBUANO	60
	BEMBA	61
	CHAMORRO	62
	FIJIAN	63

	GANDA 64 HANI 65 IDO 66 INTERLINGUA 67 KICONGO 68 KINYARWANDA 69 MALAGASY 70 MAORI 71 MAYAN 72 MINANGKABAU 73 NAHUATL 74 NYANJA 75 RUNDI 76 SAMOAN 77 SHONA 78 SOMALI 79 SOTHO 80 SUNDANESE 81 TAHITIAN 82 TONGA 83 TSWANA 84 WOLOF 85 XHOSA 86 ZAPOTEC 87 JAVANESE 88 PIDGIN_NIGERIA 89 OCCITAN 90 MANX 91 TOK_PISIN 92 BISLAMA 93 HILIGAYNON 94 KAPAMPANGAN 95 BALINESE 96 BIKOL 97 ILOCANO 98 MADURESE 99 WARAY 100 NONE 101(No Language just a Latin alphabet) SERBIAN_LATIN 102 LATIN 103 LATVIAN 104
/createfolders	Create output folder if it does not exists. Default true.
/dpi	Sets the DPI of images in the output file. Set to Auto by default, alternatively can be set to 300, 200 or 150 to force a specific resolution.
/nonimagepdf	This allows control over the treatment of non image-only PDFs, i.e. PDFs that have some text in them as well as images. The options are :

	<ul style="list-style-type: none"> • OCR. The document will be OCR'd using the image method defined by "Image Method" • Raise Error. The task will terminate with an error. If "On Error Continue" is set this then behaves as Skip. This is the default. • Skip. The document will not be processed. • Pass Through. The file will not be processed, but a copy of the document will be made and named as if the processing had occurred.
/noocr	Whether or not to perform OCR on the document (Yes to perform OCR, No to not perform OCR).
/AdvancedDespeckle	The size of the speckles to remove.
/RemoveWhitePixels	By default, despeckle removes black pixels. If set to true, the despeckle will remove white pixels rather than black pixels.
/Binarization	Whether or not to perform binarization on the document.
/Brightness	The brightness (higher values will make the result darker).
/Contrast	The contrast (lower values will make the result darker).
/SmoothingLevel	Smoothing may be useful to binarize text with a colored background in order to avoid noisy pixels (0 disables smoothing, higher values smooth more).
/Threshold	Sets the threshold for fixed threshold binarization (0 for automatic threshold computation).
/RemoveLines	Whether or not to remove lines from an image (The image must be black and white).
/HorizontalCleanX	The parameter for cleaning noisy pixels attached to the horizontal lines.
/HorizontalCleanY	The parameter for cleaning noisy pixels attached to the horizontal lines.
/VerticalCleanX	The parameter for cleaning noisy pixels attached to the vertical lines.
/VerticalCleanY	The parameter for cleaning noisy pixels attached to the vertical lines.
/HorizontalDilate	The dilate parameter that helps the detection of horizontal lines.
/VerticalDilate	The dilate parameter that helps the detection of vertical lines.
/HorizontalMaxGap	The maximum horizontal line gap to close. It is useful to remove broken lines.
/VerticalMaxGap	The maximum vertical line gap to close. It is useful to remove broken lines.
/HorizontalMaxThickness	The maximum thickness of the horizontal lines to remove. It is useful to keep vertical lines larger than this parameter. Can be also useful to keep vertical letter strokes.
/VerticalMaxThickness	The maximum thickness of the vertical lines to remove. It is useful to keep horizontal lines larger than this parameter. Can be also useful to keep horizontal letter strokes.

/HorizontalMinLength	The minimum length of the horizontal lines to remove.
/VerticalMinLength	The minimum length of the vertical lines to remove.
/RemoveDarkBorders	Removes the dark surrounding from bitonal, grayscale or color images. The dark surrounding of the image is whitened (Note: The dark border should be touching the edge of the page for this to work).
/Interpolation	Interpolates the source image to the given resolution. This value (the target resolution) must be greater than the source image's resolution.
/InterpolationMode	Sets the interpolation mode.
/KeepOriginalImage	Yes to keep the original image as it is. No to output the image generated after pre-processing is applied.
/resourcesfolder	By default the OCR resources folder is a subfolder of the extendedocr folder. This option allows the resources to be located elsewhere if required.

15 IHQC MODULE

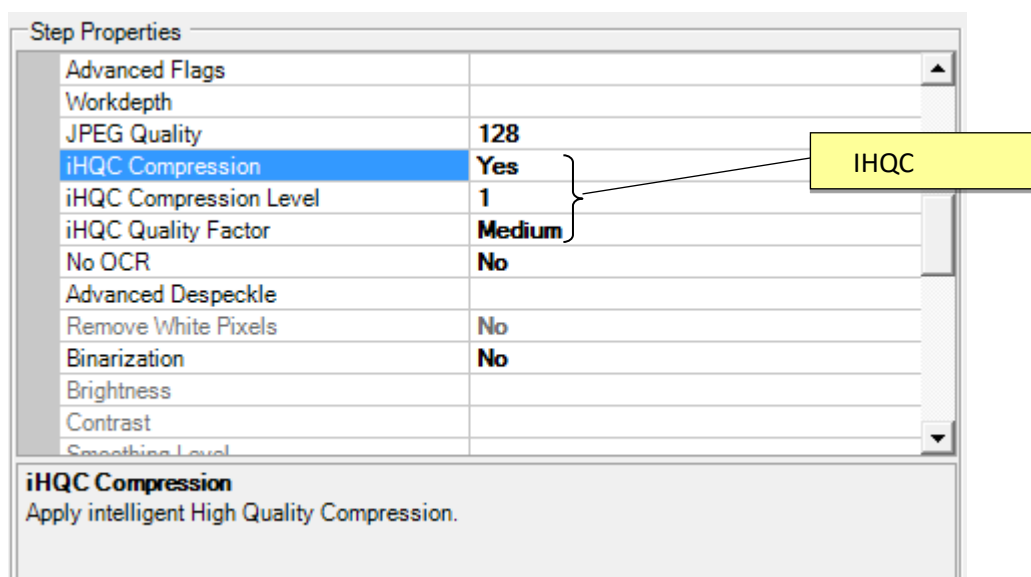
The IHQC Module is an optional module in Extended OCR. It enables the use of IRIS' new Intelligent High Quality Compression technology for powerful PDF compression without compromising visual quality, text resolution and legibility of documents.

15.1 Trial Licensing

The IHQC Module for Autobahn DX is licensed as an optional module and is not enabled by default in the trial version of the product.

To evaluate the module you can enter EXTENDEDOCRIHQCTRIAL as the license key under the "Modules and Licensing" tab. To evaluate IHQC with Asian OCR capabilities, enter EXTENDEDOCRASIANIHQCTRIAL.

15.2 IHQC properties



15.3 Command Line Interface

```
autobahndx.exe /operation=[operation name] /source=[tiff file or folder]  
/output=[output file] /target=[target folder] /mrc=[true or false] /ihqclevel=[1 to 4]  
/ihqcf=[1 to 9] [/option=value]...
```

Example

Generate a compressed searchable PDF file from a folder of TIFF and JPEG files using intelligent high quality compression.

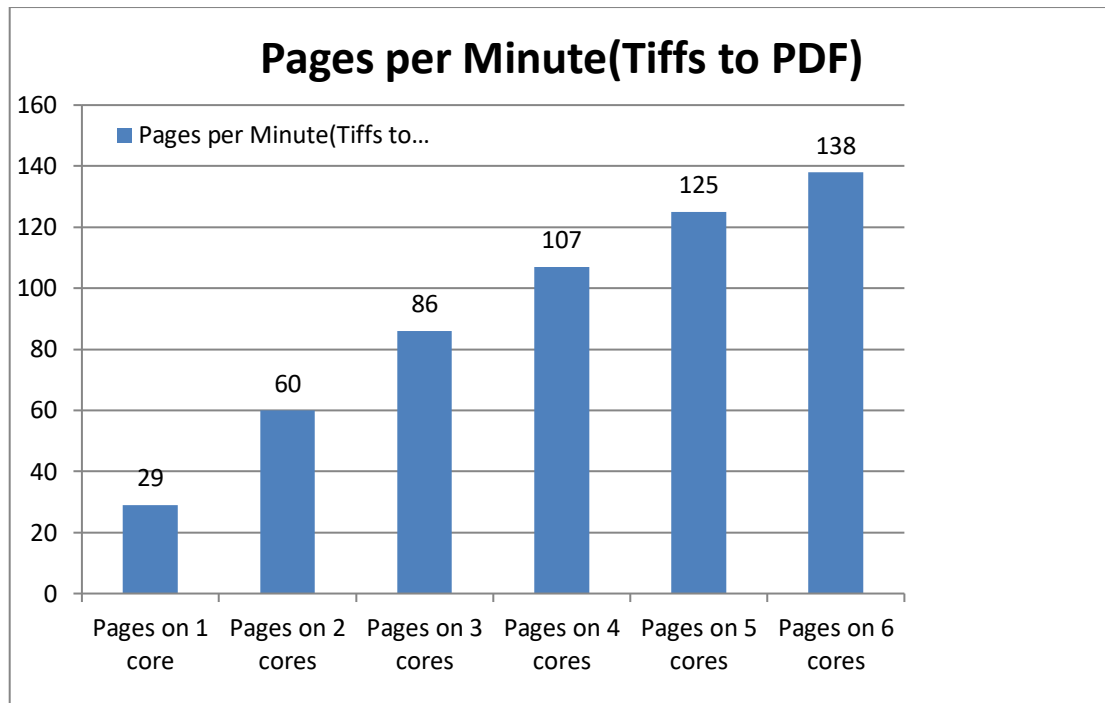
```
autobahndx.exe /source=c:\in\folder /sourcetype=folder /target=c:\out /output=outfilef
/outputtype=pdf operation=mergetifftopdf /mrc=true /ihqcleve=4 /ihqcqf=5
/ocrengine=1
```

The following parameters are needed to use IHQC:

Parameter	Notes																				
/mrc	Apply intelligent High Quality Compression. True or False																				
/IHQCLevel	The compression level to be used. Level 1 is the basic compression level. Level 3 is the most advanced intelligent High Quality Compression mode. <table> <tr> <th>Compression Level</th><th>Code</th></tr> <tr> <td>3</td><td>4</td></tr> <tr> <td>2b</td><td>3</td></tr> <tr> <td>2a</td><td>2</td></tr> <tr> <td>1</td><td>1</td></tr> </table>	Compression Level	Code	3	4	2b	3	2a	2	1	1										
Compression Level	Code																				
3	4																				
2b	3																				
2a	2																				
1	1																				
/IHQCQF	The IHQC quality factor: <table> <tr> <th>Quality</th><th>Code</th></tr> <tr> <td>Maximal quality</td><td>9</td></tr> <tr> <td>Very high quality</td><td>8</td></tr> <tr> <td>High quality</td><td>7</td></tr> <tr> <td>Favour quality over size</td><td>6</td></tr> <tr> <td>Medium</td><td>5</td></tr> <tr> <td>Favour size over quality</td><td>4</td></tr> <tr> <td>Small size</td><td>3</td></tr> <tr> <td>Very Small Size</td><td>2</td></tr> <tr> <td>Minimal size</td><td>1</td></tr> </table>	Quality	Code	Maximal quality	9	Very high quality	8	High quality	7	Favour quality over size	6	Medium	5	Favour size over quality	4	Small size	3	Very Small Size	2	Minimal size	1
Quality	Code																				
Maximal quality	9																				
Very high quality	8																				
High quality	7																				
Favour quality over size	6																				
Medium	5																				
Favour size over quality	4																				
Small size	3																				
Very Small Size	2																				
Minimal size	1																				

16 MULTICORE MODULE

This module is used to take full advantage of the number processors available on a computer. The current release allows users to process up to 64 files in parallel thereby reducing the time needed to execute a job. Below is a chart showing the number pages converted from TIFFs to PDF per minute.



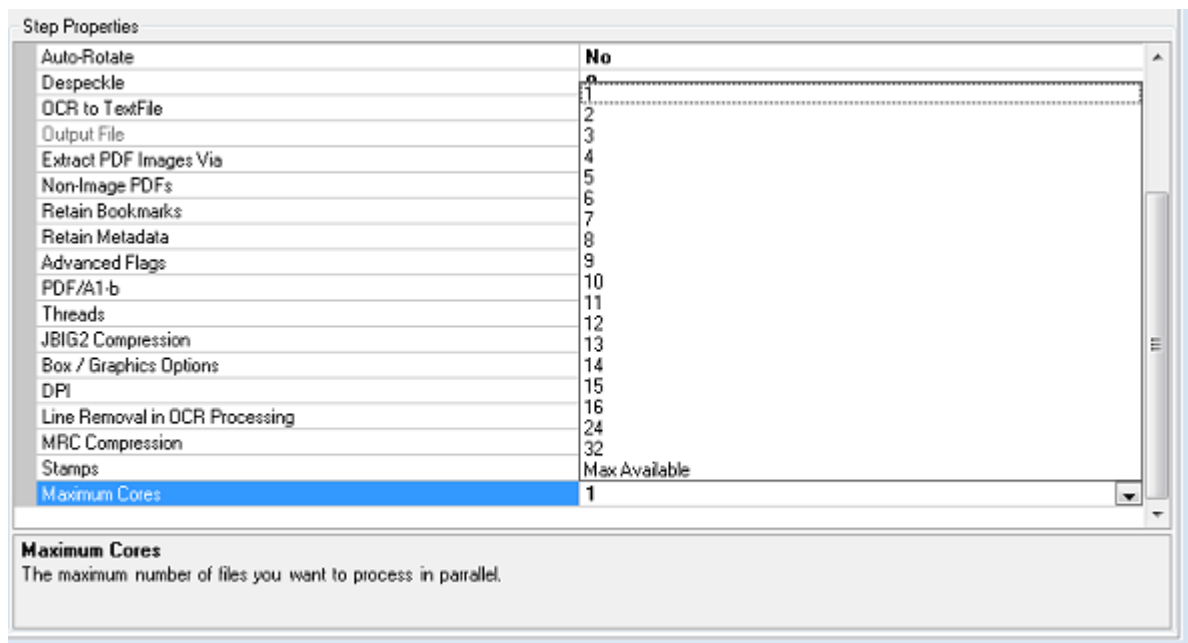
16.1 Trial Licensing

The MultiCore Module for Autobahn DX is licensed as an optional module and is not enabled by default in the trial version of the product.

To evaluate the module you can select the MULTICORETRIAL option as the license key under the “Modules and Licensing” tab.

16.2 Using the MultiCore Module

The MultiCore module is enabled on all job step types, but you might not notice the improvement on fast job steps like Merge TIFFs, Split TIFFs, Merge PDFs and Split PDFs. To take advantage of the MultiCore module, the number of processors needed to run a job can be set from the MaxCores property from the step properties section as shown below. Just bear in mind that setting this value to the number cores on your system will cause a 100% usage of CPU resources by the process. The Max Available option allows .NET to decide the best number of processors to be used.



Note: Setting the Maximum Cores to Max Available will set the number of core to the Minimum between the number of cores on your system and number of cores on your license.

16.3 Command Line Interface

The Autobahn DX command line interface has been enhanced to support the new MultiCore module. Using **/maxcores=x** as a parameter is a requirement, where x is the number of cores.

```
autobahndx.exe /operation=[operation name] /source=[tiff file or folder]
/output=[output file] /target=[target folder] [/option=value]...
```

Example

Generate searchable PDF files from image PDF files found in a folder and subfolders, while keeping the original file names (using 4 processors).

```
autobahndx.exe /source=c:\in\folder /sourcetype=tree /target=c:\out
/output=%FILENAME /outputtype=pdf operation=ocrimagepdf /ocrengine=1
/maxcores=4
```

The MultiCore module uses the parameter listed below.

Parameter	Notes
/maxcores	Any integer representing the number of cores needed.

17 BARCODE SUPPORT

Autobahn DX now has the ability to Split and rename PDF/TIFF Files based on barcodes present in them.

17.1 Barcode Formats

The table below gives us details about the Barcode Formats supported by Autobahn DX

Barcode Format	Code	Group
AZTEC	1	2D
CODABAR	2	1D
CODE_39	4	1D
CODE_93	8	1D
CODE_128	16	1D
DATA_MATRIX	32	2D
EAN_8	64	1D
EAN_13	128	1D
ITF (CODE_25)	256	1D
MAXICODE	512	2D
PDF_417	1024	Others
QR_CODE	2048	2D
RSS_14	4096	Others
RSS_EXPANDED	8192	Others
UPC_A	16384	1D
UPC_E	32768	1D
UPC_EAN_EXTENSION	65536	Others
MSI	131072	Others
PLESSEY	262144	Others

18 HIGH AVAILABILITY

18.1 Background information

The high availability step in Autobahn DX is designed to utilise two instances of the product running on separate hosts, each instance will be configured with a job which will be scheduled to run at given intervals using the Autobahn scheduler.

The concept is based on the master host initially running the conversion whilst the slave host continuously monitors the master host, the slave host will take over the conversions if the master host:

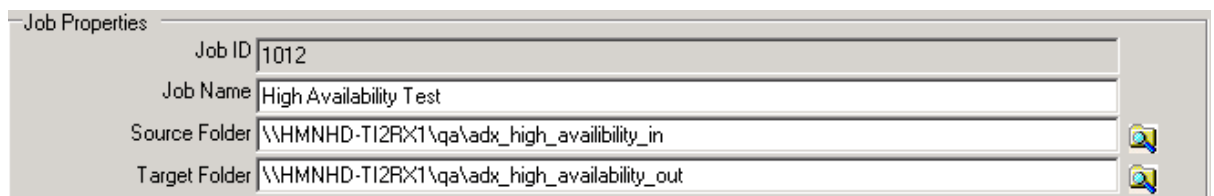
- Is NOT accessible (based on a ping).
- Autobahn Service is NOT running.
- Job ID on the Master host is in NOT 'Running'.

18.2 Configuring the job on host one:

1. Create a new job and add the 'High Availability' step as the first step.
2. Add any additional required step for your conversion.



3. Next define the Source and Target folders for the Job, these need to be on a shared network location accessible to both hosts.

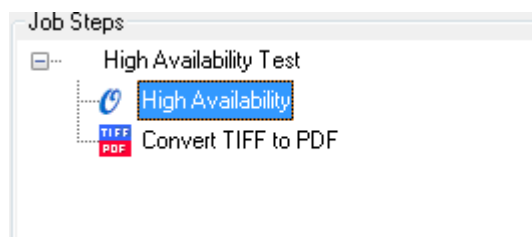


4. In the 'High Availability' step properties section define the following:
 - a. Enter the Job ID on the current host.
 - b. Select the Default status of the current host (Master | Slave)
 - c. Enter the shared.txt file location – this needs to be on a shared network location accessible to both hosts.
 - d. Name of the paired host.
 - e. Install path of Autobahn DX on the paired host.

Step Properties	
1 - Shared Settings	
Current Job ID	1012
Default Status	Master
Shared Status File	\\HMNHD-TI2RX1\Backups\Shrevin\qa\adx_high_availability_shared\shared.txt
2 - Pair Settings	
Hostname	aquaforestqa
ADX Install Path	C:\Aquaforest\Autobahn DX
Job ID	1007

18.3 Configuring the job on host two:

1. Create a new job and add the 'High Availability' step as the first step.
2. Add any additional required step for your conversion.



3. Next define the Source and Target folders for the Job, these need to be the same as those configured in the job on the first host.

Job Properties	
Job ID	1007
Job Name	High Availability Test
Source Folder	\\HMNHD-TI2RX1\Backups\qa\adx_high_availability_in
Target Folder	\\HMNHD-TI2RX1\Backups\qa\adx_high_availability_out

4. In the 'High Availability' step properties section define the following:
 - a. Enter the Job ID on the current host.
 - b. Select the Default status of the current host (Master | Slave)
 - c. Enter the shared.txt file location set in the job on the first host.
 - d. Name of the paired host.
 - e. Install path of Autobahn DX on the paired host.

Step Properties	
1 - Shared Settings	
Current Job ID	1007
Default Status	Slave
Shared Status File	\\HMNHD-TI2RX1\Backups\Shrevin\qa\adx_high_availability_shared\shared.txt
2 - Pair Settings	
Hostname	fileserver
ADX Install Path	D:\Aquaforest\Autobahn DX
Job ID	1012

18.4 Configuring the scheduler

The scheduler is job specific and will need to be configured for each job on each host.

By default this is set to Ad-Hoc, change this to run continuously and set the desired frequency. In the following example the scheduler will attempt to start the job every minute between 12:00 and 23:59.

If the job is already running on the master host the scheduler will attempt to start the job after another minute.

When the scheduler attempts to start the job on the slave host, the slave will check to see if the master host is up AND if the Autobahn Service is running AND if the job is running. If these conditions are met the job will not run and the scheduler will try after another minute.

19 ANY FILE TO PDF

This is divided into two steps OCR any file to PDF and Convert Any File To PDF:

19.1 OCR Any File to PDF

The OCR Any file step is a combination of the “Convert Any File to PDF” and OCR image PDF.

The idea behind this step is to allow users to point this job to a folder with different file types and then Autobahn will decide on the operations to carry out to make these files searchable PDF files.

The main advantage of this step is that users can go from any file type to a searchable PDFs in an atomic process, hence allowing them to uncheck the “Use Work Folder” Which makes the processed files available in the target folder as soon as it is processed.

19.1.1 Configuration

A Configuration file is available for this step in the location below,
“Autobahn Dx DIR\bin\ AnyFileToSearchablePDF.exe.config”.

This allows the user to have some control over the step, Additional Configuration variables that can be set via the configuration file are as follows:

```
<configuration>
  <appSettings>
    <add key="ConvertToPDF"
value=".docx.doc.rtf.xls.xlsx.ppt.pptx.vsd.txt.xml.html.pub.puz.htm.mht.msg.odt.swx.w
pd.ods.sxc.odp.sxi.odg.sxd"/>
    <add key="OCRFile" value=".tiff.tif.pdf.jpg.jpeg.png.bmp.gif"/>
    <add key="ConvertToPDFAndOCR" value=".ps"/>
  </appSettings>
  <startup>
    <supportedRuntime version="v4.0" sku=".NETFramework,Version=v4.5" />
  </startup>
</configuration>
```

Command Line / Config File Name	Description
ConvertToPDF	A list of file extensions to be converted to PDF Only. Note: these should be text based documents.
OCRFile	A list of file extensions to OCR'd Only. Note: These should be Image PDFs and Image Files only.
ConvertToPDFAndOCR	A list of file extensions to be Converted to PDF and OCR'd.

19.2 Convert Any File to PDF

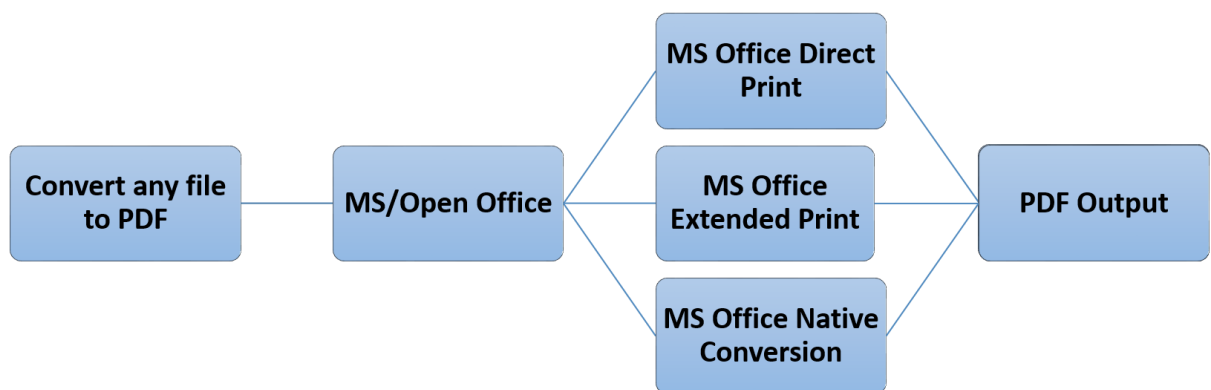
This converts any file type to PDF, the search ability status of the output PDF depends on the source document, E.G MS Office Input file.

This step uses a virtual printer to print files to a PDF file instead of a physical printer. Due to the printer and Microsoft office automation, there are a lot of technical and security Limitations. Thus, we have introduced different methods of converting files to PDF so that our users can have a robust solution to their requirements.

We have provided a configuration file to allow users switch between these various methods. This blog will provide a detailed explanation of the different configuration options provided by Aquaforest.

19.2.1 Overview of the Different Conversions Methods

Aquaforest uses three different methods to convert office files to PDF files, these methods are explained in the section below.



19.2.1.1 MS Office Native Conversion

This step uses the “Save as PDF” option in MS Office to save the PDF file directly. This requires Microsoft Office 2007 or newer. Microsoft Office 2007 requires the free "Save as PDF or XPS" add-in for Office 2007 to be installed. We recommend you use the 2010 and new versions.

If you are not interested in changing properties like Image Compression, Image Downsizing, Font embedding and you are ok with the default PDF/A output from your version of office, we recommend using this approach.

19.2.1.2 MS Office Direct Print

This method uses the BCL 'easyPDF SDK x' printer to print out PDF files directly from Microsoft Office. This is the recommended option for producing PDF/A files and PDF files with font embedding.

19.2.1.3 MS Office Extended Print

In this method, Office automation is used to create an intermediate XPS file, which is then printed with automatic hyperlink extraction. This approach has some technical differences to the first method that allows the users to use the software in a different way. This requires Microsoft Office 2007 or newer. Microsoft Office 2007 requires the free "Save as PDF or XPS" add-in for Office 2007 to be installed.

If you are performing conversions in server environments e.g., via IIS, Windows Services, Session 0 and ASP, this method does not require an interactive user to be logged on for server conversions to succeed, thus we recommend this setting for server environments.

19.2.2 Comparison of the features provided by the different methods

The table below shows you the features available in the different methods.

Property	Direct Print	Extended Print	Native Conversion
Bookmark depth	✓	✓	✓
Convert Hyperlinks	✓	✓	✓
Convert Bookmarks (Word)	✓	✓	✓
IncludeDocumentMarkups (Track Changes Word)	✓	✓	✓
Paper Orientation	✓	✓	✓
Paper Size	✓	✓	✓
Margin	✓	✓	✓
PDF/A1b	✓	✓	Depends on the version of Microsoft Office
PDF/X1a	✓	✓	
PDF/X3	✓	✓	
Image Compression	✓	✓	✗
Image Downsizing	✓	✓	✗
Font Embedding	✓	✓	✗
Print All Sheets(Excel)	✓	✓	✓
Include Document Properties	✗	✓	✓
Fit to Page (Excel)	✓	✓	✓
MSG Files	✓	✗	✗
Frame Slides (PowerPoint)	✓	✓	✓
Print Color Type (PowerPoint)	✓	✓	✓
Output Type (PowerPoint)	✓	✓	✓
Handout Order (PowerPoint)	✓	✓	✓
Print Graphics (Pub)	✓	✗	✗

19.2.2.1 In-depth Look at the Configuration file

The configuration file can be found in the following locations:

- Autobahn DX: "Autobahn DX Installation directory \pj\bin\topdf.exe.config"
- PDF Junction: "PDF Junction Installation directory \bin\topdf.exe.config"

Below are the contents of the configuration file, to use a method for a file type, just write the extension in the value property of the conversion Method as shown below.

Note: Do not write an extension in more than one method

```
<!-- Extension Mapping -->
<add key="AutoExtension" value=""/>
<add key="AutoExtensionEx" value=".jpeg.jpg.txt"/>
<add key="AutoExtensionOpenNative" value=""/>
<add key="AutoExtensionNative" value=""/>
<add key="WordExtension" value=""/>
<add key="WordExtensionEx" value=".docx.doc.rtf"/>
<add key="ExcelExtension" value=".xls.xlsx"/>
<add key="ExcelExtensionEx" value=""/>
<add key="PowerPointExtension" value=""/>
<add key="PowerPointExtensionEx" value=".ppt.pptx"/>
<add key="VisioExtension" value=""/>
<add key="VisioExtensionEx" value=".vsd"/>
<add key="IEExtension" value=".xml"/>
<add key="PublisherExtension" value=""/>
<add key="PublisherExtensionEx" value=".pub.puz"/>
<add key="IEExtendedExtension" value=".mht"/>
<add key="HTMLExtension" value=".htm.html"/>
<add key="OutlookExtension" value=".msg"/>
<add key="OpenOfficeExtension" value=".odt.swx.wpd.ods.sxc.odp.sxi.odg.sxd"/>
<add key="ExcludedExtensions" value=".zip.exe.pps.ps.chm"/>
<add key="PDFExtension" value=".pdf"/>
<!--Native-->
<add key="NativeOfficePDF" value="true"/>
```

19.2.3 Mappings Between Configuration File and the Conversion Methods

The table below maps the configuration file with the Conversion Methods discussed earlier.

Note: The Configuration options ending with “Ex” work with the “NativeOfficePDF” config option to select a suitable conversion method.

Configuration	Conversion Method	File Types	Comment
AutoExtension	Direct Print	All file types	This option works with any file extension that has an application that is compatible with the BCL printer
AutoExtensionEx	Extended Print	All file types	
AutoExtensionNative	Native Conversion	MS Office files	
OpenOfficeExtension	Direct Print	Open Office files	This option works with all files that can be opened in open office.
AutoExtensionOpenNative	Native Conversion	Open Office files	
WordExtension	Direct Print	.doc, .docx, .rtf... (All files that can be opened in MS Word)	
WordExtensionEx NativeOfficePDF=true	Native Conversion		
WordExtensionEx NativeOfficePDF=false	Extended Print		
ExcelExtension	Direct Print	.xls, .csv, .xlsx... (All files that open in excel)	
ExcelExtensionEx NativeOfficePDF=true	Native Conversion		
ExcelExtensionEx NativeOfficePDF=false	Extended Print		
PowerPointExtension	Direct Print	.ppt, .pptx (All power point files)	
PowerPointExtensionEx NativeOfficePDF=true	Native Conversion		
PowerPointExtensionEx NativeOfficePDF=false	Extended Print		
VisioExtension	Direct Print	.vsd	
VisioExtensionEx NativeOfficePDF=true	Native Conversion		
VisioExtensionEx NativeOfficePDF=false	Extended Print		
IEExtension	Direct Print	.html, .xml, .mht All IE files.	
IEExtendedExtension	Extended Print		
HTMLExtension	Direct Print	.htm, .html	
PublisherExtension	Direct Print	.pub, .puz	
PublisherExtensionEx NativeOfficePDF=true	Native Conversion		
PublisherExtensionEx NativeOfficePDF=false	Extended Print		
OutlookExtension	Direct Print	.msg files	
PDFExtension		PDF files	We usually convert PDF attachments if you select the option
ExcludedExtensions		others	Skips all the extensions present here.

20 KINGFISHER JOB STEP

Aquaforest Kingfisher is one of our products that can perform the operations below on PDF files.

- Separate by Text Patterns
- Separate by Barcodes
- Renaming based on Text Patterns
- Renaming based on barcodes
- Zonal Patterns
- Extract Text to Text Files
- Extract Text to CSV/Excel Files

You can now use the “Kingfisher Job” step to run jobs that you have set up in kingfisher with in Autobahn DX, for more information about kingfisher, visit the link below.

<https://www.aquaforest.com/en/kingfisher.asp>

You can check here for more details on how to set up a kingfisher job in autobahn dx.

<https://www.aquaforest.com/wp/index.php/adding-a-kingfisher-job-as-an-autobahn-dx-step/>

21 AUTOBAHN DX CONFIGURATION FILES

This section will list the different configuration files we have in Autobahn DX and their uses.

21.1 tiffjunction.exe.config

The TIFF Junction configuration file “tiffjunction.exe.config” can be found in the “tj\bin” directory of Autobahn DX, this file allows the user to make some backend changes to the way TIFF Junction works. Below are the contents of the file.

```
<?xml version="1.0"?>
<configuration>
  <startup useLegacyV2RuntimeActivationPolicy="true">
  </startup>
  <appSettings>
    <add key="SafeAndSlow" value="false" />
    <add key="DateFormat" value="MM dd yyyy" />
    <add key="AllowErrorTiffFiles" value="false" />
    <add key="UseLibTiff4JPEG" value="false" />
    <add key="OrderByInt" value="true" />
    <!--Extensions in lower case -->
    <add key="AcceptedImages" value=".jpeg,.png,.bmp,.wbmp,.tif,.tiff,.gif,.jpg"/>
  </appSettings>
</configuration>
```

We are concerned only with the element within the “appSettings” tags, the table below gives a more detailed explanation of what each

Directory	Contents
SafeAndSlow	Set this to true if you want TIFF Junction to carry out extra checks and validations like PDF/A validation after conversion. Setting it to true will make TIFF Junction slower.
DateFormat	You can change the DateFormat of the output file names here, this works in conjunction with the %DATESTAMP%.
AcceptedImages	Tiff junction will treat any extension found here as an acceptable image file.
OrderByInt	When merging files with numbers as their file name, setting this to true will make sure that they are ordered numerically.
AllowErrorTiffFiles UseLibTiff4JPEG	Only use this when advised from Aquaforest support.

21.2 pj.exe.config

The PDF Junction configuration file “pj.exe.config” can be found in the “pj\bin” directory of Autobahn DX, this file allows the user to make some backend changes to the way PDF Junction works. Below are the contents of the file.

```
<?xml version="1.0"?>
<configuration>
  <startup useLegacyV2RuntimeActivationPolicy="true">
  </startup>
  <appSettings>
    <add key="OrderByInt" value="true"/>
    <add key="ValidatePDFa" value="true"/>
    <add key="RemoveDuplicateFontFiles" value="true"/>
    <add key="DateFormat" value="MM dd yyyy" />
  </appSettings>
</configuration>
```

We are concerned only with the element within the “appSettings” tags, the table below gives a more detailed explanation of what each

Directory	Contents
ValidatePDFa	Set this to true if you want PDF Junction to validate PDF/A files after conversion.
DateFormat	You can change the DateFormat of the output file names here, this works in conjunction with the %DATESTAMP%.
RemoveDuplicateFontFiles	When merging PDFs with embedded fonts, this option will make sure there are no duplicate font files in the target file, setting this to false can cause very large output PDF files, while setting it to true might slow down the process a bit.
OrderByInt	When merging files with numbers as their file name, setting this to true will make sure that they are ordered numerically.

21.3 Others

File name	Location	Comment
Autobahn.config	config	Do not change until instructed by support.
topdf.exe.config	Pj\bin	Check section 19.1.1 for more details
AnyFileToSearchableP DF.exe.config	bin	Check section 19.2.2.1 for more details

22 AUTOBAHN DX DIRECTORIES

After installation, the following subdirectories are created in the PDF Junction install directory:

Directory	Contents
bin	Executables, DLLs and WSH files.
code examples	Sample API and command line projects
config	gettingstarted Autobahn.config
custom	Custom Script Files
logs	Default location for log files is logs/%JOBID%/ %DATESTAMP%.txt
jobdef	Contains the Job Definition files.
jobstatus	Contains the Job Status files.
steptype	Contains the StepType definition files.
samples	Sample documents
work	Default work directory. Subdirectories are created as required underneath this directory and named 9999/work1, 9999/work2 etc. where 9999 is the jobid.
support	Contain our Diagnostic Tool to help user during support cases.
temp	Default directory for temporary files.
Pc	Stand-alone PDF Compression
pj	PDF Junction Install
tj	TIFF Junction Install
license	Contains key.txt which holds the license key
docs	Includes the Autobahn reference guide and release notes

23 ACKNOWLEDGEMENTS

This product makes use of several Open Source components which are included in binary form. The appropriate acknowledgements and copyright notices are given below.

Name	Homepage
BitMiracle.LibTiff.NET	Homepage GitHub
Cuneiform	n/a (Copyright (c) 1993-2008, Cognitive Technologies)
FreedImage.NET	Homepage
IKVM.NET	Homepage Sourceforge
Leptonica	Homepage
Libjpeg	Homepage
Libpng	Homepage
Libtiff	Homepage
log4Net	Homepage
PDFBox	Homepage
veraPDF	Homepage GitHub
Zlib	Homepage
ZXing.NET	Homepage