



PDF Junction
Standard and Professional
Editions
Reference Guide Version 3.2

November 2012

© Copyright 2007-2012 Aquaforest Limited

<http://www.aquaforest.com/>

CONTENTS

1	INTRODUCTION	3
1.1	INSTALLATION	3
1.2	SYSTEM REQUIREMENTS	3
1.3	CONFIGURATION FOR CONVERSION TO PDF – SYSTEM REQUIREMENTS	3
1.3.1	<i>Native Application</i>	3
1.3.2	<i>Service Configuration</i>	3
1.4	LICENCING AND PURCHASING.....	4
1.5	CONVENTIONS	4
2	PDF JUNCTION WINDOWS INTERFACE.....	5
2.1	MAIN WINDOW.....	5
2.1.1	<i>Job Definition Section</i>	5
2.1.2	<i>Options Section</i>	7
2.1.3	<i>Split Options Section</i>	7
2.1.4	<i>PDF To TIFF Section</i>	8
2.1.5	<i>Extract Text From PDF Section</i>	8
2.1.6	<i>Task Log Section</i>	8
2.2	SECURITY SETTINGS	9
2.2.1	<i>Source Document Security</i>	9
2.2.2	<i>Target Document Security</i>	9
2.3	DOCUMENT METADATA	10
2.4	DOCUMENT DISPLAY OPTIONS	10
2.4.1	<i>Display Modes</i>	11
2.4.2	<i>Settings</i>	11
2.5	CUSTOM SETTINGS	12
2.5.1	<i>Custom Script and Log Files</i>	12
2.5.2	<i>Run Custom Script</i>	12
3	USING PDF JUNCTION FROM THE COMMAND LINE.....	13
3.1	COMMAND LINE SYNTAX	13
3.2	EXAMPLE COMMANDS.....	14
3.2.1	<i>Example jobid Commands</i>	14
3.2.2	<i>Example Split Commands</i>	14
3.2.3	<i>Example Merge Commands</i>	15
3.2.4	<i>Example Set Commands</i>	15
3.2.5	<i>Example Get Command</i>	15
3.3	JOBOPTION SPECIFICATIONS	16
3.3.1	<i>Job Options for Split Operations</i>	16
3.3.2	<i>Job Options for Merge Operations</i>	17
3.3.3	<i>Job Options for Set Operations</i>	17
3.3.4	<i>Job Options for Get Operations</i>	18
3.4	METADATA SPECIFICATION.....	18
3.5	SECURITY SPECIFICATION.....	18
3.6	DOCOPTIONS SPECIFICATION	19
4	CONVERSION TO PDF – GUI AND COMMAND LINES INTERFACES (PROFESSIONAL EDITION)	20
4.1	GUI INTERFACE	20
4.2	COMMAND LINE INTERFACE.....	23
4.3	CONFIGURATION FILE	24
5	PDF TO TIFF CONVERSION COMMAND LINE INTERFACE.....	26
5.1	COMMAND LINE INTERFACE.....	26
6	PDF TEXT EXTRACTION COMMAND LINE INTERFACE.....	27

6.1	COMMAND LINE INTERFACE.....	27
7	WEB OPTIMIZATION (LINEARIZATION) COMMAND LINE INTERFACE	27
7.1	COMMAND LINE INTERFACE.....	27
8	SET XMP PROPERTIES (PROFESSIONAL EDITION ONLY).....	28
8.1	SETTING METADATA	28
8.2	COMMAND LINE INTERFACE.....	29
9	XML JOB TICKET FILES	30
10	CUSTOM SCRIPTS.....	31
11	XML “INFORMATION” FILES.....	32
12	PDF JUNCTION FILES AND DIRECTORIES	33
13	SUPPORT	33
14	ACKNOWLEDGEMENTS	33

1 INTRODUCTION

PDF Junction provides a set of processing tools for PDF files, including splitting, merging, setting of security and other attributes, and generation of XML metadata files. In addition, the Professional version of the product also supports conversion of Microsoft Office and other documents to PDF, and the setting of XMP properties.

The product has both a GUI and command-line interface. Batch processes can be defined using the GUI to create an XML Job Ticket file which can be run using the GUI, or using the command line. In addition, all options can be used from the command line without having used the GUI.

1.1 Installation

The installation MSI will guide you through the process of setting up PDF Junction.

1.2 System Requirements

- Windows XP, Windows 2003, 2008, Vista, Windows 7 (32/64 bit)
- Native Applications (such as Microsoft Office) are required for PDF Conversion.
- From version 3.1 PDF Junction may be configured to allow Open Office may be
- 50Mb of disk space is required.

1.3 Configuration for Conversion to PDF – System Requirements

The “Convert any file to PDF” process makes use of a print driver to generate the PDF which has the following pre-requisites to successfully perform a conversion :

1.3.1 Native Application

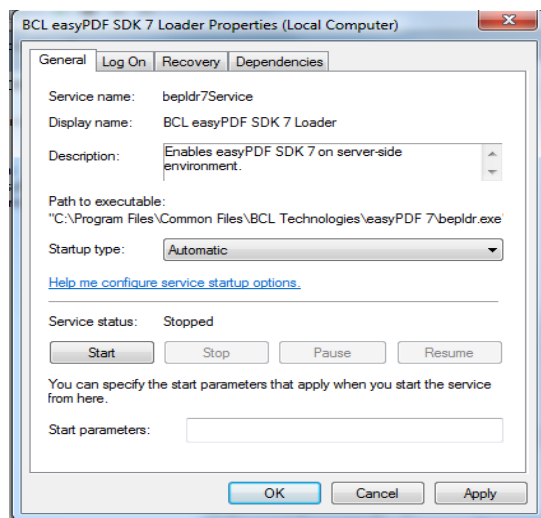
An application must be installed which is capable of printing the file type to be converted to PDF. Most commonly this will be applications or office suites such as Microsoft Office or Open Office. In addition, the application must be able to be automated as the print driver process occurs as a background automated task via a service.

Section 4.3 of the reference guide details how PDF Junction can be configured to make use of specific applications for certain file types – for example how to use Open Office to assist converting Microsoft Word documents and therefore eliminate the need for Microsoft Office to be installed.

1.3.2 Service Configuration

The conversion print driver is called via the BCL easyPDF SDK 7 Loader service which can be configured via Control Panel | Administrative Tools | Services.

As the conversion is automated it is important that the Log On user for the service has permission to access the required native applications without any pop-up dialog boxes. It may be convenient to configure a specific user – eg “bcluser” and configure the service to run as this user - having first logged in as the user and launch each of the relevant applications to ensure that there are no popup dialog boxes that would remain when accessed in batch mode.



1.4 Licencing and Purchasing

Unlicensed versions are fully functional and not time-restricted, but all generated PDF files have an alert message which indicates that the document was generated with an unlicensed versions of the product.

When a license is purchased (see <http://www.aquaforest.com/en/buy001.asp>) a permanent license key will be issued for use with the product which should be entered using the Help | License option of the GUI. There is no need to download another version of the software.

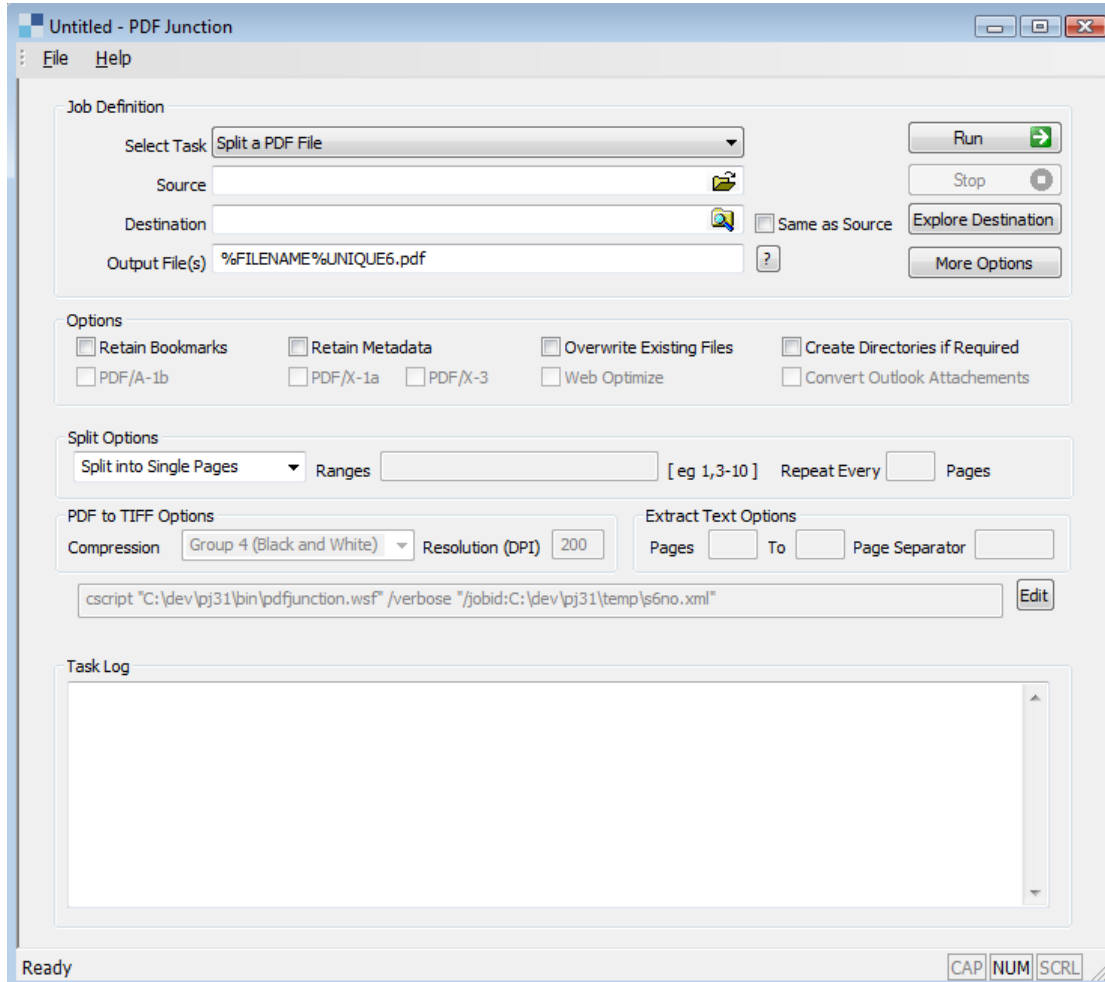
1.5 Conventions

Throughout this guide type in **bold courier** is used to represent operating system commands and *PDFJUNCTIONDIR* represents the directory in which PDF Junction was installed, by default C:\Aquaforest\PDF Junction.

2 PDF JUNCTION WINDOWS INTERFACE

2.1 Main Window

When PDF Junction is launched, the main window is displayed as shown below. This allows the definition and running of jobs, as well as saving and loading job definitions to and from files.



2.1.1 Job Definition Section

Screen Field / Button	Description
Run	Runs the current job. Job output will appear in the "task log section of the screen".
Stop	Halts processing of the currently running job.
Explore Destination	Launches Windows Explorer using the destination as the starting point.
More Options	This launches a set of property sheets which can be used to set properties of the generated PDF files, such as security and metadata values. See sections 2.2 through 2.5 for more details.

Screen Field / Button	Description				
Select Task	<p>This defines which task is to be run and may be one of :</p> <p>Split a PDF file Split a Folder of PDF Files Split a Folder Tree of PDF Files</p> <p>Merge a Folder of PDF Files Merge each Folder in Folder Tree</p> <p>Set Properties of a PDF File Set Properties of a Folder of PDF Files Set Properties of a Folder Tree of PDF Files</p> <p>Create Properties XML File of a PDF File Create Properties XML File for each PDF file in a Folder Create Properties XML File for each PDF file in a Folder Tree</p> <p>Convert a PDF File to TIFF Convert a Folder of PDF Files to TIFF Convert a Folder Tree of PDF Files to TIFF</p> <p>Extract Text from a PDF File Extract Text from each PDF File in a Folder Extract Text from each PDF File in a Folder Tree</p> <p>Convert a File to PDF Convert a Folder of Files to PDF Convert a Folder Tree of Files to PDF</p> <p>Set XMP Properties of a PDF File* Set XMP Properties for each PDF file in a Folder* Set XMP Properties for each PDF file in a Folder Tree*</p> <p>Web Optimize a PDF File Web Optimize a Folder of PDF Files Web Optimize a Folder Tree of PDF Files</p> <p>*See section 7 for further details</p>				
Source	The source PDF file or directory.				
Destination	The location where the generated PDF file(s) will be placed. This can be set to be the same as the source location. Note that PDF Junction cannot overwrite source files, a new file is always made.				
Output File(s)	<p>This defines the template output file name.</p> <table border="1" data-bbox="671 1794 1342 2009"> <tbody> <tr> <td data-bbox="671 1794 895 1854">%BOOKMARK</td> <td data-bbox="895 1794 1342 1854">Bookmark title</td> </tr> <tr> <td data-bbox="671 1854 895 2009">%PAGE<i>n</i></td> <td data-bbox="895 1854 1342 2009">The first page number from source file, zero padded to <i>n</i> digits. If <i>n</i> is not supplied or is zero, then zero padding is not used.</td> </tr> </tbody> </table>	%BOOKMARK	Bookmark title	%PAGE <i>n</i>	The first page number from source file, zero padded to <i>n</i> digits. If <i>n</i> is not supplied or is zero, then zero padding is not used.
%BOOKMARK	Bookmark title				
%PAGE <i>n</i>	The first page number from source file, zero padded to <i>n</i> digits. If <i>n</i> is not supplied or is zero, then zero padding is not used.				

	%FILENAME	Source file name without .pdf
	%UNIQUE n	Unique number starting at 1. If n is supplied, then zero padding to n digits is used. If n is not supplied or is zero, then zero padding is not used.
	%DIRNAME	Source directory name of the directory currently being processed.
	<i>String</i>	(Any string)

The .pdf extension is automatically added if not specified.

For example, a split operation using %FILENAME-part%UNIQUE6% which would give *filename.pdf* split into *filename-part000001.pdf filename-part000002.pdf* etc.

2.1.2 Options Section

Screen Field / Button	Description
Retain Bookmarks	If checked, generated files will include bookmarks from the original file.
Retain Metadata	If checked, generated files will include metadata (such as Author and Title) from the original file.
Overwrite Existing Files	If checked, generated PDF files will overwrite existing files of the same name (but not source files)
Create Directories where required	If checked, when processing a tree, subdirectories will be created in the target directory tree when required.
PDF/A-1b	The generated PDF file will be PDF/A-1b compliant.
PDF/X-1a	The generated PDF file will be PDF/X-1a compliant.
PDF/X-3	The generated PDF file will be PDF/X-3 compliant.
Web Optimize	The generated PDF file will be Web Optimized (Linearized)
Convert Outlook Attachments	If selected (when converting .msg files) the generated PDF file will comprise the email plus each page of each attachment.

2.1.3 Split Options Section

Screen Field / Button	Description								
Split Type	<i>One of:</i> Split into single pages Split by top-level bookmark Split by ranges (See below) Split by repeating ranges (See below)								
Page Ranges	Set of page ranges separated by commas that defines which pages from the original should be extracted. The following types of page ranges are allowed : <table border="1" data-bbox="671 1890 1355 2018"> <tr> <td>1</td> <td>Specifies a single page</td> </tr> <tr> <td>1-3</td> <td>Specifies a range of pages</td> </tr> <tr> <td>10-20even</td> <td>Specifies even pages within the range</td> </tr> <tr> <td>10-20odd</td> <td>Specifies odd pages within the range</td> </tr> </table>	1	Specifies a single page	1-3	Specifies a range of pages	10-20even	Specifies even pages within the range	10-20odd	Specifies odd pages within the range
1	Specifies a single page								
1-3	Specifies a range of pages								
10-20even	Specifies even pages within the range								
10-20odd	Specifies odd pages within the range								

	20-lastpage	Note that <i>lastpage</i> can be used to represent the last page in the document.
Repeating Range	<p>Apply the page range to each set of <i>Page Ranges</i> pages within the document. For example if 2-4 is specified for page ranges, and 4 is specified as the repeating range, then the range is re-applied every 4 pages.</p> <p>Hence the file is split such that the first output file contains pages 2-4 from the original document, the second contains pages 6-8 and so on.</p>	

2.1.4 PDF To TIFF Section

Screen Field / Button	Description
Compression	This specifies the compression that will be used in the TIFF version of the PDF file. The choices are Group 4 (black and white only) or LZW (which also supports color). The default is Group 4.
Resolution	This specifies the resolution in DPI of the result TIFF file. The default is 200. A higher figure of 300 can give better results in some cases, at the cost of a larger file size.

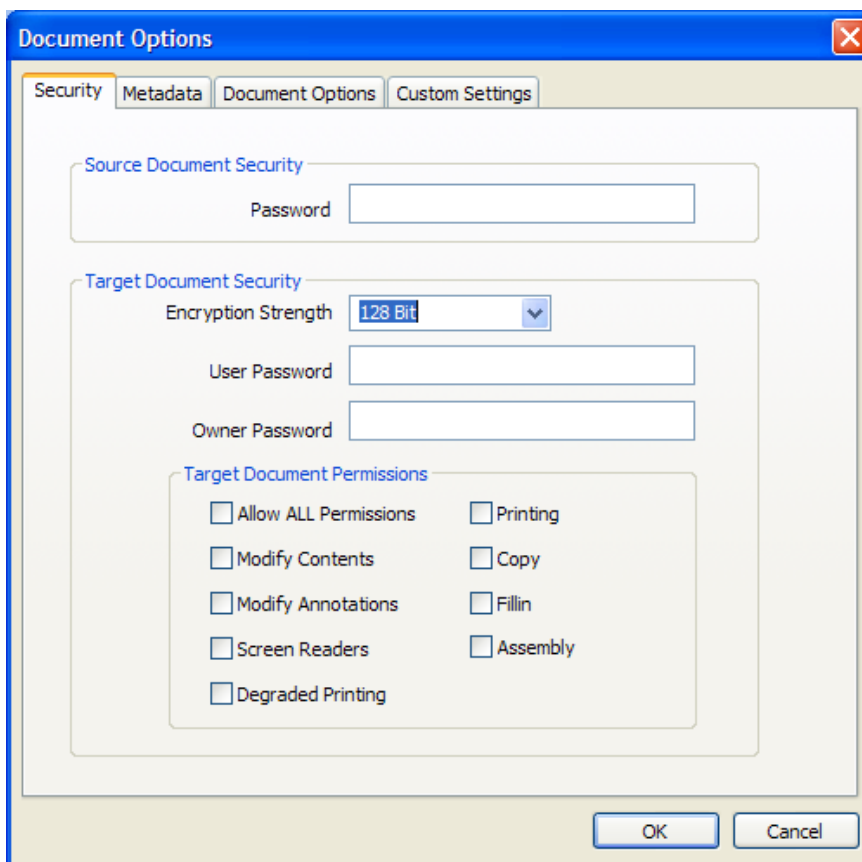
2.1.5 Extract Text From PDF Section

Screen Field / Button	Description
From, To	This defines the range of pages that will have text extracted. By default all pages are processed.
Page Sep	This allows the definition of an optional page separator string in the output text file.

2.1.6 Task Log Section

Screen Field / Button	Description
Command	This is the operating system command that is used to run the job. It can be edited after using the “Edit” button, although there is normally no need for this.
Task Output	The output of the job appears here.

2.2 Security Settings



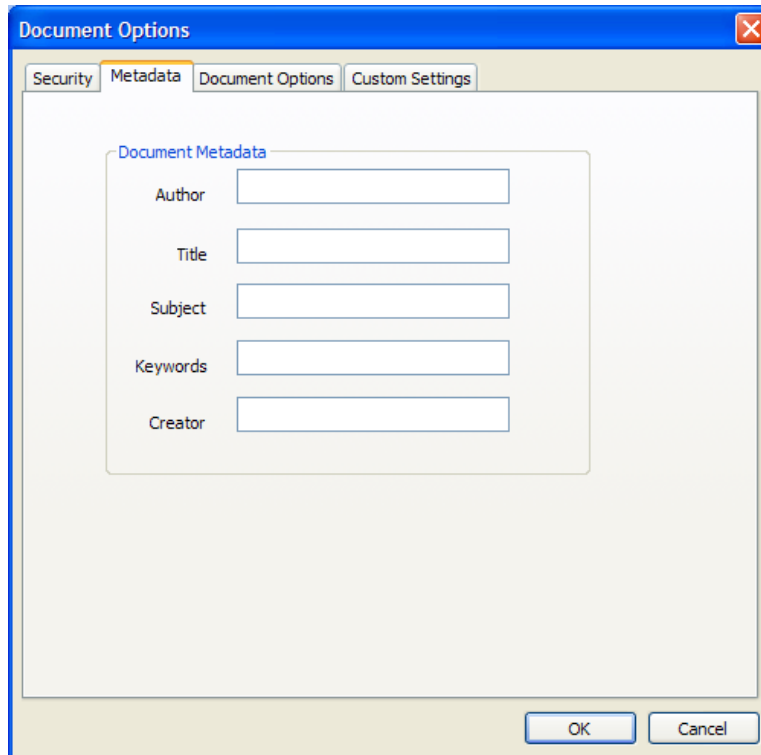
2.2.1 Source Document Security

Screen Field / Button	Description
Password	If the source document requires a password it should be entered here.

2.2.2 Target Document Security

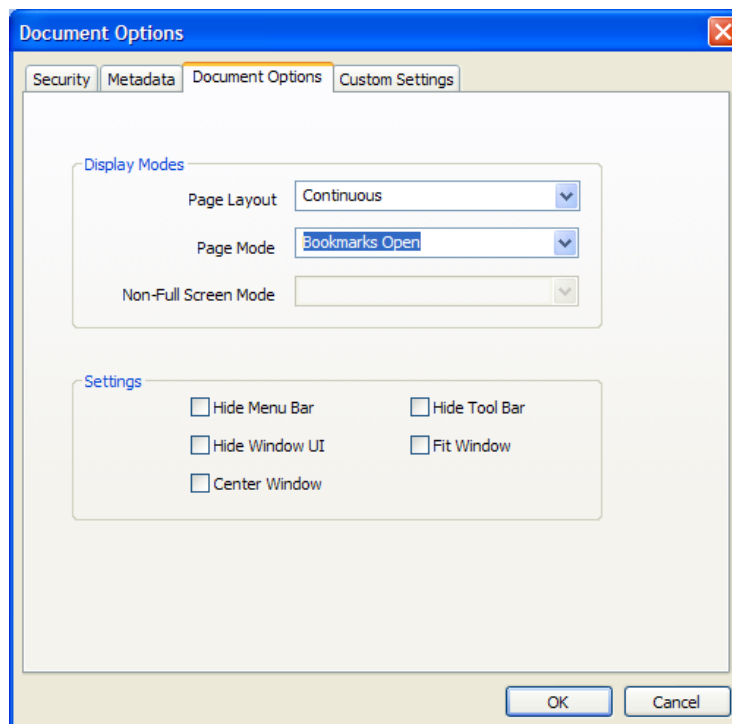
Option	Description																				
User Password	A password that will be required to open the document.																				
Owner Password	A password that will be required to change the document permissions.																				
Permissions	<table border="1"> <thead> <tr> <th>Permission</th> <th>Description</th> </tr> </thead> <tbody> <tr> <td>Allow ALL Permissions</td> <td>All all the permissions below.</td> </tr> <tr> <td>Printing</td> <td>Allow high-quality printing</td> </tr> <tr> <td>Modify Contents</td> <td>Allow assembly (see below) and other document medications</td> </tr> <tr> <td>Copy</td> <td>Allow text and graphic copying and extraction</td> </tr> <tr> <td>Modify Annotations</td> <td>Allow modification of annotations</td> </tr> <tr> <td>Fillin</td> <td>Allow filling of form fields</td> </tr> <tr> <td>Screen Readers</td> <td>Allow extraction of text and graphics in support of accessibility.</td> </tr> <tr> <td>Assembly</td> <td>Allow rotation, insertion or deletion of pages.</td> </tr> <tr> <td>Degraded Printing</td> <td>Allow low-quality printing</td> </tr> </tbody> </table>	Permission	Description	Allow ALL Permissions	All all the permissions below.	Printing	Allow high-quality printing	Modify Contents	Allow assembly (see below) and other document medications	Copy	Allow text and graphic copying and extraction	Modify Annotations	Allow modification of annotations	Fillin	Allow filling of form fields	Screen Readers	Allow extraction of text and graphics in support of accessibility.	Assembly	Allow rotation, insertion or deletion of pages.	Degraded Printing	Allow low-quality printing
	Permission	Description																			
	Allow ALL Permissions	All all the permissions below.																			
	Printing	Allow high-quality printing																			
	Modify Contents	Allow assembly (see below) and other document medications																			
	Copy	Allow text and graphic copying and extraction																			
	Modify Annotations	Allow modification of annotations																			
	Fillin	Allow filling of form fields																			
	Screen Readers	Allow extraction of text and graphics in support of accessibility.																			
Assembly	Allow rotation, insertion or deletion of pages.																				
Degraded Printing	Allow low-quality printing																				

2.3 Document Metadata



This page allows setting of the generated PDF Document Properties. Custom and XMP metadata may also be set – see section 7 for further details.

2.4 Document Display Options



2.4.1 Display Modes

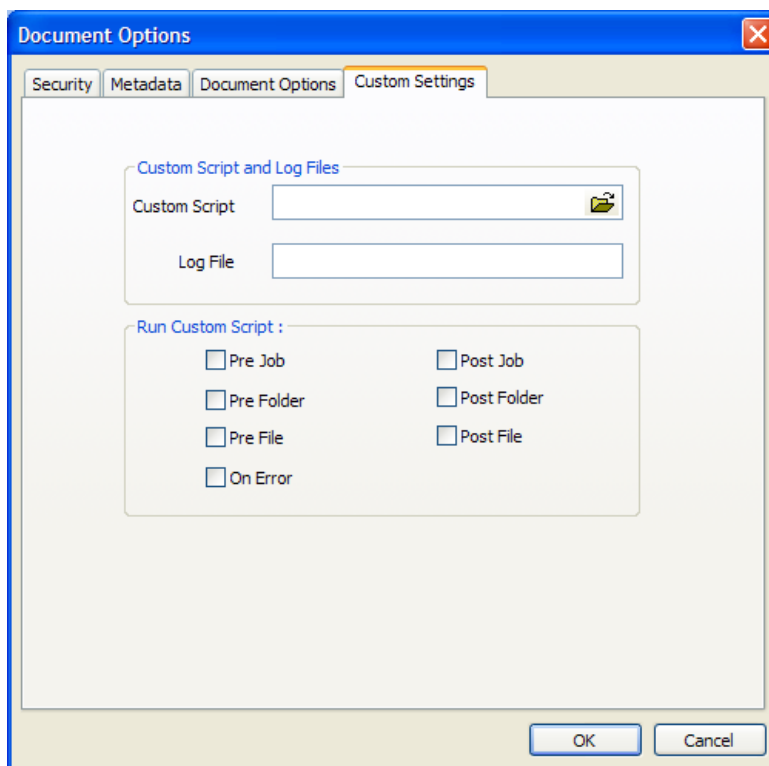
Option	Description
Page Layout	The setting for initial document page display. One of : <ul style="list-style-type: none">• Single Page• Continuous• Continuous Facing (odd pages left)• Continuous Facing (odd pages right)
Page Mode	The setting for initial viewer mode. One of : <ul style="list-style-type: none">• Neither Bookmarks nor Thumbnails Open• Bookmarks Open• Thumbnails Open• Bookmarks & Thumbnails Open• Full Screen
Non-Full Screen Mode	Only applicable where Page Mode=Full Screen. The setting for document page display when exiting Full Screen mode. One of : <ul style="list-style-type: none">• Neither Bookmarks nor Thumbnails Open• Bookmarks Open• Thumbnails Open

2.4.2 Settings

Option	Description
Hide Tool Bar	The viewer's tool bar will be hidden
Hide Menu Bar	The viewer's menu bar will be hidden
Hide Window UI	The viewer's UI elements (scrollbars etc) will be hidden
Fit Window	The viewer will resize the document's window to fit the size of the first displayed page.
Center Window	The document window will be positioned in the center of the screen.

2.5 Custom Settings

See section 5 for full details of running Custom Scripts.



2.5.1 Custom Script and Log Files

Option	Description
Custom Script	The path of a custom script to be used with the Job.
Log File	The name of a log file (which will be placed in <i>PDFJUNCTIONDIR</i> \logs). The log file will contain the same output as is written to the output panel.

2.5.2 Run Custom Script

Option	Description
Pre Job	If checked, the custom script will be called at the start of the job
Post Job	If checked, the custom script will be called at the end of the job
Pre Folder	If checked, the custom script will be called at the start of processing each folder
Post Folder	If checked, the custom script will be called at the end of processing each folder
Pre File	If checked, the custom script will be called at the start of processing each file
Post File	If checked, the custom script will be called at the end of processing each file
On Error	If checked, the custom script will be called when a processing error occurs.

3 USING PDF JUNCTION FROM THE COMMAND LINE

3.1 Command Line Syntax

All operations supported by PDF Junction can be accessed via the command line as covered in this section and sections 4, 5 and 6.

Usage:

```
cscript pdfjunction.wsf [/jobid:value] /operation:value [/sourcetype:value] [/target:value]
[/joboptions:value] [/metadata:value] [/security:value] [/docoptions:value] sourcefiles1
[sourcefiles2...] [/version[+|-]] [/verbose[+|-]] [/debug[+|-]] [/onerrorcontinue[+|-]] [/silent[+|-]]
```

Parameter	Notes
/jobid:value	If used, specifies the full path of an XML Job Ticket file saved from the GUI or generated by some other means. Job files in the PDF Junction jobs directory may be referred to by a shorthand method of <i>jobname</i> where the Job Ticket file is <i>jobname.xml</i> .
/operation:value	Must be split, merge, set or get
/sourcetype:value	Source type (file, folder, tree). The default value is file.
/target:value	Target directory for result files. If not specified, the source directory will be used as the target.
/joboptions:value	Set of options for the specified operation. Described in detail in section 3.3.
/metadata:value	Metadata settings for result PDF files. By default metadata fields are left blank. Described in detail in section 3.4.
/security:value	Security settings for result PDF files. By default files are not secured. Described in detail in section 3.5.
/docoptions:value	Document option settings for result PDF files. Described in detail in section 3.6.
Sourcefiles	Source PDF file, folder or tree. May be multiple files for merge operations.
/version	Provide version and license information
/verbose	Verbose progress messages
/debug	Debug progress messages
/silent	No progress messages
/onerrorcontinue	Allow job to continue after errors

Notes

1. cscript.exe is required to run the command. This is usually included in a standard PATH, but if not would need to be specified explicitly

Eg C:\WINDOWS\SYSTEM32\cscript.exe ...

2. Options that contain spaces will need to be quoted. For example `"/target:c:\output files"`

3.2 Example Commands

3.2.1 Example jobid Commands

Run the job specified in the job file C:\jobs\job001.xml :

```
cscript pdfjunction.wsf /jobid:C:\Jobs\job001.xml
```

Run the job specified in the job file C:\Program Files\PDF Junction\jobs\job001.xml :

```
cscript pdfjunction.wsf /jobid:job001
```

3.2.2 Example Split Commands

Split a PDF file, c:\demo\in\demo.pdf into single page PDF files placed in the directory c:\demo\out

```
cscript pdfjunction.wsf /operation:split /joboptions:-s  
/target:c:\demo\out c:\demo\in\demo.pdf
```

Split a PDF file, c:\demo\in\demo.pdf into single pages, each named demo_split999.pdf where demo is the page number. The files will be placed in the directory c:\demo\out

```
cscript pdfjunction.wsf /operation:split "/joboptions:-s -f  
%F%_split%U3%" /target:c:\demo\out c:\demo\in\demo.pdf
```

Split a PDF file, c:\demo\in\demo.pdf by bookmarks. The files will be placed in the directory c:\demo\out and named according to the bookmark.

```
cscript pdfjunction.wsf /operation:split "/joboptions:-k -b -f %B%"  
/target:c:\demo\out c:\demo\in\demo.pdf
```

Split all PDF files in c:\demo\in into single page PDF files placed in the directory c:\demo\out\name where name is the name of the original pdf file, creating the directories where they don't exist.

```
cscript pdfjunction.wsf /operation:split /sourcetype:folder  
"/joboptions:-c -s -f %F%/U%" /target:c:\demo\out c:\demo\in
```

Split all PDF files in c:\demo\in and each subdirectory into single page PDF files placed in the directory c:\demo\out\sub\name where sub is the subdirectory name, and name is the name of the original pdf file, creating the directories where they don't exist.

```
cscript pdfjunction.wsf /operation:split /sourcetype:tree  
"/joboptions:-c -s -f %F%/U%" /target:c:\demo\out c:\demo\in
```

3.2.3 Example Merge Commands

Merge PDF files demo1.pdf, demo2.pdf, demo3.pdf in c:\demo\in\ into a single PDF file named demomerge.pdf in the directory c:\demo\out

```
cscript pdfjunction.wsf /operation:merge /target:c:\demo\out
"/joboptions:-f demomerge
c:\demo\in\demo1.pdf*c:\demo\in\demo2.pdf*c:\demo\in\demo3.pdf
```

Merge all the PDF files in c:\demo\in\ into a single PDF file named demomerge.pdf in the directory c:\demo\out, overwriting the file if it already exists.

```
cscript pdfjunction.wsf /operation:merge /sourcetype:folder
/target:c:\demo\out "/joboptions:-o -f demomerge" c:\demo\in
```

Merge all the PDF files in c:\demo\in\ and each subdirectory into a single PDF file per source directory. The result file will be named dir.pdf where dir is the source directory name, and placed in the corresponding directory in c:\demo\out\

```
cscript pdfjunction.wsf /operation:merge /sourcetype:tree
/target:c:\demo\out "/joboptions:-c -o -f %D%" c:\demo\in
```

3.2.4 Example Set Commands

Note that the set parameters (/metadata ..) can be used with the split and merge commands to set characteristics of the result files.

Creates a copy of c:\demo\in\demo3.pdf with the metadata settings shown, in the directory c:\demo\out

```
cscript pdfjunction.wsf /operation:set /target:c:\demo\out
c:\demo\in\demo3.pdf "/metadata:Author=Tony Bush;Title=A Special
Document"
```

Creates a copy of each PDF file in c:\demo\in\ with a user password of "secret", with printing and modification of annotations allowed. The result PDF files are placed in the directory c:\demo\out.

```
cscript pdfjunction.wsf /operation:set /sourcetype:folder /joboptions:-o
/target:c:\demo\out c:\demo\in "/security:userpassword=Secret;
permissions=allowprinting,allowmodifyannotations"
```

Creates a copy of each PDF file in c:\demo\in\ with viewer preferences set to hide toolbar and to open the document showing bookmarks. The result PDF files are placed in the directory c:\demo\out.

```
cscript pdfjunction.wsf /operation:set /sourcetype:folder /joboptions:-o
/target:c:\demo\out c:\demo\in "/docoptions:hidetoolbar,pagemodeuseoutlines"
```

3.2.5 Example Get Command

Generates an XML file with metadata from c:\demo\in\demo3.pdf with the metadata settings shown, in the directory c:\demo\out

```
cscript pdfjunction.wsf /operation:get /target:c:\demo\out
c:\demo\in\demo3.pdf "/joboptions:-f %F%_metadata"
```


3.3 /joboption specifications

3.3.1 Job Options for Split Operations

Parameter	Notes												
-b	Include bookmarks												
-p	Password for opening document												
-m	Retain metadata												
-c	Create result directories if required												
-o	Overwrite result files if they already exist												
-r range{,range}	Set of page ranges separated by commas that defines which pages from the original should be extracted. The following types of page ranges are allowed : <table border="1" data-bbox="501 712 1353 909"> <tr> <td>1</td> <td>Specifies a single page</td> </tr> <tr> <td>1-3</td> <td>Specifies a range of pages</td> </tr> <tr> <td>10-20even</td> <td>Specifies even pages within the range</td> </tr> <tr> <td>10-20odd</td> <td>Specifies odd pages within the range</td> </tr> <tr> <td>20-lastpage</td> <td>Note that <i>lastpage</i> can be used to represent the last page in the document.</td> </tr> </table>	1	Specifies a single page	1-3	Specifies a range of pages	10-20even	Specifies even pages within the range	10-20odd	Specifies odd pages within the range	20-lastpage	Note that <i>lastpage</i> can be used to represent the last page in the document.		
1	Specifies a single page												
1-3	Specifies a range of pages												
10-20even	Specifies even pages within the range												
10-20odd	Specifies odd pages within the range												
20-lastpage	Note that <i>lastpage</i> can be used to represent the last page in the document.												
-g <i>grouppages</i>	Apply the page range to each set of <i>grouppages</i> pages within the document. For example if -r 2-4 and -e 5 is specified, then the range is re-applied every 4 pages. Hence the file is split such that the first output file contains pages 2-4 from the original document, the second contains pages 6-8 and so on.												
-k	Split by top-level bookmark												
-s	Split by single pages (The Default)												
-f string	Output file name specifier. If -f is not specified, the default parameter setting is %FILENAME%UNIQUE6% which would give (for example) <i>filename.pdf</i> split into <i>filename000001.pdf filename000002.pdf</i> etc. <table border="1" data-bbox="501 1290 1353 1832"> <tr> <td>%BOOKMARK</td> <td>Bookmark title</td> </tr> <tr> <td>%PAGEn</td> <td>The first page number from source file, zero padded to n digits. If n is not supplied or is zero, then zero padding is not used</td> </tr> <tr> <td>%FILENAME</td> <td>Ssource file name without .pdf</td> </tr> <tr> <td>%UNIQUEn</td> <td>Unique number starting at 1. If n is supplied, then zero padding to n digits is used. If n is not supplied or is zero, then zero padding is not used</td> </tr> <tr> <td>%DIRNAME</td> <td>Source directory name of the directory currently being processed.</td> </tr> <tr> <td><i>String</i></td> <td>(Any string)</td> </tr> </table> <p>The .pdf extension is automatically added if not specified.</p>	%BOOKMARK	Bookmark title	%PAGE n	The first page number from source file, zero padded to n digits. If n is not supplied or is zero, then zero padding is not used	%FILENAME	Ssource file name without .pdf	%UNIQUE n	Unique number starting at 1. If n is supplied, then zero padding to n digits is used. If n is not supplied or is zero, then zero padding is not used	%DIRNAME	Source directory name of the directory currently being processed.	<i>String</i>	(Any string)
%BOOKMARK	Bookmark title												
%PAGE n	The first page number from source file, zero padded to n digits. If n is not supplied or is zero, then zero padding is not used												
%FILENAME	Ssource file name without .pdf												
%UNIQUE n	Unique number starting at 1. If n is supplied, then zero padding to n digits is used. If n is not supplied or is zero, then zero padding is not used												
%DIRNAME	Source directory name of the directory currently being processed.												
<i>String</i>	(Any string)												

3.3.2 Job Options for Merge Operations

Parameter	Notes				
-b	Include bookmarks				
-p	Password for document reading				
-m	Retain metadata (taken from the first file in the merge list).				
-c	Create result directories if required				
-o	Overwrite result files if they already exist				
-f string	<p>Output file name specifier. If -f is not specified, the merged file will be called mergeoutput.pdf.</p> <table border="1"> <tbody> <tr> <td>%DIRNAME</td> <td>Source directory name of the directory currently being processed.</td> </tr> <tr> <td><i>String</i></td> <td>(Any string)</td> </tr> </tbody> </table> <p>The .pdf extension is automatically added if not specified.</p>	%DIRNAME	Source directory name of the directory currently being processed.	<i>String</i>	(Any string)
%DIRNAME	Source directory name of the directory currently being processed.				
<i>String</i>	(Any string)				

3.3.3 Job Options for Set Operations

Parameter	Notes						
-c	Create result directories if required						
-o	Overwrite result files if they already exist						
-f string	<p>Output file name specifier.</p> <table border="1"> <tbody> <tr> <td>%FILENAME</td> <td>Source file name without .pdf</td> </tr> <tr> <td>%DIRNAME</td> <td>Source directory name of the directory currently being processed.</td> </tr> <tr> <td><i>String</i></td> <td>(Any string)</td> </tr> </tbody> </table> <p>The .pdf extension is automatically added if not specified.</p>	%FILENAME	Source file name without .pdf	%DIRNAME	Source directory name of the directory currently being processed.	<i>String</i>	(Any string)
%FILENAME	Source file name without .pdf						
%DIRNAME	Source directory name of the directory currently being processed.						
<i>String</i>	(Any string)						
-p	Password for document reading						

3.3.4 Job Options for Get Operations

Parameter	Notes												
-c	Create result directories if required												
-o	Overwrite result files if they already exist												
-f string	Output file name specifier. <table border="1" data-bbox="501 580 1351 1122"> <tr> <td>%BOOKMARK</td> <td>Bookmark title</td> </tr> <tr> <td>%PAGEn</td> <td>The first page number from source file, zero padded to n digits. If n is not supplied or is zero, then zero padding is not used.</td> </tr> <tr> <td>%FILENAME</td> <td>Ssource file name without .pdf</td> </tr> <tr> <td>%UNIQUEn</td> <td>Unique number starting at 1. If n is supplied, then zero padding to n digits is used. If n is not supplied or is zero, then zero padding is not used</td> </tr> <tr> <td>%DIRNAME</td> <td>Source directory name of the directory currently being processed.</td> </tr> <tr> <td><i>String</i></td> <td>(Any string)</td> </tr> </table> <p>The .xml extension is automatically added</p>	%BOOKMARK	Bookmark title	%PAGE n	The first page number from source file, zero padded to n digits. If n is not supplied or is zero, then zero padding is not used.	%FILENAME	Ssource file name without .pdf	%UNIQUE n	Unique number starting at 1. If n is supplied, then zero padding to n digits is used. If n is not supplied or is zero, then zero padding is not used	%DIRNAME	Source directory name of the directory currently being processed.	<i>String</i>	(Any string)
%BOOKMARK	Bookmark title												
%PAGE n	The first page number from source file, zero padded to n digits. If n is not supplied or is zero, then zero padding is not used.												
%FILENAME	Ssource file name without .pdf												
%UNIQUE n	Unique number starting at 1. If n is supplied, then zero padding to n digits is used. If n is not supplied or is zero, then zero padding is not used												
%DIRNAME	Source directory name of the directory currently being processed.												
<i>String</i>	(Any string)												
-p	Password for document reading												

3.4 /metadata specification

This may be used to specify metadata properties as in the following example :

```
cscript pdfjunction.wsf /operation:set /target:c:\demo\out
c:\demo\in\demo3.pdf "/metadata:Author=Tony Bush;Title=A Special
Document"
```

The attributes that may be set are :

- Author
- Title
- Subject
- Keywords
- Creator

3.5 /security specification

This may be used to specify security properties as in the following example :

```
cscript pdfjunction.wsf /operation:set /sourcetype:folder /joboptions:-o
/target:c:\demo\out c:\demo\in "/security:userpassword=Secret
;permissions=allowprinting,allowmodifyannotations"
```

Parameter	Description																				
Userpassword	A password that will be required to open the document.																				
Ownerpassword	A password that will be required to change the document permissions.																				
Permissions	A comma separated list of document permissions <table border="1" data-bbox="502 448 1353 840"> <thead> <tr> <th>Permission</th> <th>Description</th> </tr> </thead> <tbody> <tr> <td>allowprinting</td> <td>Allow high-quality printing</td> </tr> <tr> <td>allowmodifycontents</td> <td>Allow assembly (see below) and other document medications</td> </tr> <tr> <td>allowcopy</td> <td>Allow text and graphic copying and extraction</td> </tr> <tr> <td>allowmodifyannotations</td> <td>Allow modification of annotations</td> </tr> <tr> <td>allowfillin</td> <td>Allow filling of form fields</td> </tr> <tr> <td>allowscreenreaders</td> <td>Allow extraction of text and graphics in support of accessibility.</td> </tr> <tr> <td>allowassembly</td> <td>Allow rotation, insertion or deletion of pages.</td> </tr> <tr> <td>allowdegradedprinting</td> <td>Allow low-quality printing</td> </tr> <tr> <td>allowall</td> <td>Allow all the permissions</td> </tr> </tbody> </table>	Permission	Description	allowprinting	Allow high-quality printing	allowmodifycontents	Allow assembly (see below) and other document medications	allowcopy	Allow text and graphic copying and extraction	allowmodifyannotations	Allow modification of annotations	allowfillin	Allow filling of form fields	allowscreenreaders	Allow extraction of text and graphics in support of accessibility.	allowassembly	Allow rotation, insertion or deletion of pages.	allowdegradedprinting	Allow low-quality printing	allowall	Allow all the permissions
Permission	Description																				
allowprinting	Allow high-quality printing																				
allowmodifycontents	Allow assembly (see below) and other document medications																				
allowcopy	Allow text and graphic copying and extraction																				
allowmodifyannotations	Allow modification of annotations																				
allowfillin	Allow filling of form fields																				
allowscreenreaders	Allow extraction of text and graphics in support of accessibility.																				
allowassembly	Allow rotation, insertion or deletion of pages.																				
allowdegradedprinting	Allow low-quality printing																				
allowall	Allow all the permissions																				
strength	Unless this is set to some other value (such as 40), the default of 128 is used.																				

3.6 /docoptions specification

This may be used to specify document viewing preferences as in the following example :

```
cscript pdfjunction.wsf /operation:set /sourcetype:folder /joboptions:-o /target:c:\demo\out c:\demo\in "/docoptions:hidetoolbar,pagemodeuseoutlines"
```

Property	Description
pagelayoutsinglepage	Single Page (SinglePage)
pagelayoutonecolumn	Continuous(OneColumn)
pagelayouttwocolumnleft	ContinuousFacing [odd pages left] (TwoColumnLeft)
pagelayouttwocolumnright	ContinuousFacing [odd pages right] (TwoColumnRight)
pagemodeusenone	No Thumbnails or Bookmarks Visible (UseNone)
pagemodeuseoutlines	Bookmarks Visible (Use Outlines)
pagemodeusethumbs	Thumbnails Visible (UseThumbs)
pagemodef fullscreen	Full Screen Mode (FullScreen)
hidetoolbar	The viewer's tool bar will be hidden
hidemenubar	The viewer's menu bar will be hidden
hidewindowui	The viewer's UI elements (scrollbars etc) will be hidden
fitwindow	The viewer will resize the document's window to fit the size of the first displayed page.
centerwindow	The document window will be positioned in the center of the screen.
nonfullscreenpagemodeusenone	On exiting full screen mode, neither outline or thumbnail images are shown.
nonfullscreenpagemodeusenoutline	On exiting full screen mode outlines are visible.
nonfullscreenpagemodeusethumbs	On exiting full screen mode thumbnails are visible.

4 CONVERSION TO PDF – GUI AND COMMAND LINES INTERFACES (PROFESSIONAL EDITION)

The Professional Edition of PDF Junction includes facilities to convert Microsoft Office and other document types to PDF via GUI and command line interfaces.

4.1 GUI Interface

The standard PDF Junction interface is used, and one of the following Tasks selected

Convert a File to PDF

Convert a Folder of Files to PDF

Convert a Folder Tree of Files to PDF

The conversion process can be tailored according to the PDF Conversion Settings selected. This screen can be accessed via the “More Options” tab.

The screenshot shows the 'Document Options' dialog box with the 'PDF Conversion Settings' tab selected. The dialog is divided into several sections:

- Conversion Control:** Includes a 'Conversion Timeout (Seconds)' text box, a 'Continue On Error' checkbox, and a 'Conversion Error Folder' text box with a folder selection icon.
- Microsoft Office Conversion Settings:** Includes checkboxes for 'Convert Bookmarks', 'Convert Hyperlinks', 'Print All Sheets (Excel)', and 'Print BG Color (IE)'. It also features a 'Depth' dropdown menu set to 'Heading 1', a 'Print Scale % (Visio)' text box, and text boxes for 'Header (IE)' and 'Footer (IE)'.
- Image and Font Conversion Settings:** Includes a dropdown for 'Image Compression', an 'Image Downsizing' checkbox, 'Image JPEG Quality (5-100)' and 'Downsize Resolution (DPI)' text boxes, a 'Font Embedding' dropdown, an 'Embed Fonts as Type 0' checkbox, and a 'Font Substitution' dropdown.
- Page Settings and Margins:** Includes text boxes for 'Top', 'Bottom', 'Left', 'Right', 'Height', and 'Width' margins, and a 'Paper Orientation' dropdown.

At the bottom right of the dialog are 'OK' and 'Cancel' buttons.

The conversion settings available are as follows :

Option	Command Line / Config File Name	Description
Conversion Timeout	FileConversionTimeout	Limits the amount of time in seconds that can be spent on a conversion. A value of zero means wait indefinitely.
Continue on Error	ContinueOnError	For multiple file processing, continue if an error occurs with one file.
Conversion Error Folder	ErrorFolder	Define the folder where documents are placed if their conversion raised an error.
Convert Bookmarks	Convertbookmarks	For MS Word, convert bookmarks
Depth	BookmarkDepth	<p>This property will take effect only when the <u>ConvertBookmarks</u> property is set to True. Numbers defining bookmark levels must be equal to or larger than one. Word style names must not repeat in the string. The string must not start or end with the delimiter. When this property is empty, the default style mapping (Heading one through nine will be mapped to level one through nine) will be used. Therefore, empty string is functionally equivalent to:</p> <p>Heading 1 1 Heading 2 2 Heading 3 3 Heading 4 4 Heading 5 5 Heading 6 6 Heading 7 7 Heading 8 8 Heading 9 9</p> <p>Note: If you use non-English version of Microsoft Word, then you may need to replace the word "Heading" with its localized version.</p>
Convert Hyperlinks	ConvertHyperlinks	Sets the flag to indicate whether to convert Word hyperlinks to PDF hyperlinks.
Print All Sheets	PrintAllSheets	The flag that indicates whether to print all Excel worksheets or not.
Print BG Color	PrintBGColor	For files printed via IE Sets the flag that indicates whether to print background color or not when printing.
Print Scale	PrintScale	For Visio files, sets the print scale
Header	Header	This property modifies Internet Explorer's header setting.
Footer	Footer	This property modifies Internet Explorer's footer setting.
Image Compression	ImageCompression	If you want a lossless image compression, use PRN_IMAGE_COMPRESS_ZIP (ZIP compression).
Image Downsizing	ImageDownsizing	If the this property is set to True, then the resolution of images are reduced to the DPI value specified in the <u>ImageDownsizeResolution</u> property.
Image JPEG Quality	ImageJPEGQuality	The allowed value range is from 5 to 100 with 100 being the highest quality.
Downsize Resolution	ImageDownsizeResolution	If the <u>ImageDownsizing</u> property is set to True, then the resolution of images are reduced to the DPI value specified in this property.

Option	Command Line / Config File Name	Description
Font Embedding	FontEmbedding	The option PRN_FONT_EMBED_FULLSET (embedding fullset of font) will cause significant increase in PDF file size, especially for CJK font, and therefore not recommended. If you need to embed font, PRN_FONT_EMBED_SUBSET (embed subset of font) will be a better choice.
Font Substitution	FontSubstitution	For the PRN_FONT_SUBST_TABLE (use font substitution table) option, you need to configure the substitution table. The table is stored under the "Device Setting" section of the printer driver properties (can be accessed from Control Panel).
Embed Fonts as Type 0	FontEmbedAsType0	This option is recommended if you have non-standard fonts like barcode font.
Top Margin	MarginTop	Sets top margin.
Bottom	MarginBottom	Sets bottom margin.
Left	MarginLeft	Sets left margin.
Right	MarginRight	Sets right margin.
Width	PageWidth	Sets a custom page width.
Height	PageHeight	Sets a custom page height.
Paper Orientation	PaperOrientation	Sets paper orientation. Eg PRN_PAPER_ORIENT_LANDSCAPE

4.2 Command Line Interface

A command line interface to PDF generation is provided topdf.exe in the PDF Junction bin directory

```
topdf.exe /source=sourcefiledefinition {/option=value}
```

Options can be any of the options listed in section 4.1 in addition to the following :

Command Line / Config File Name	Description
/Source	Source file definition. Can include wildcards.
/TargetFolder	Target folder for converted file.
/Output	
/CreateFolders	Create output and error folders where required.
/PaperSize	Word does not use the paper size setting from printer driver. If you need to change the paper size, use this property instead. If you need to use a custom paper size, set this property to PRN_MSO_PAPER_CUSTOM, and set the <u>PageWidth</u> and <u>PageHeight</u> properties.
/PrintColorType	With this property, you can set the PowerPoint to print with either color, gray scale, or black and white.
/QueueWaitTimeOut	Since PowerPoint cannot perform multiple conversion at the same time, each conversion request will be put into queue, and they are converted one at a time. A waiting print job will timeout if it waits for more than the value specified in QueueWaitTimeout property. Timeout value is in milliseconds. Set to zero if you want to wait indefinitely.
/DisableScriptDebugger	Enables/Disables Internet Explorer's script debugger. It is highly recommended that Internet Explorer's script debugger is turned off during printing so that PDF conversion process is not interrupted.
/DisplayErrorDialogOnEveryError	Enables/Disables Internet Explorer's error dialog displayed on every error. It is highly recommended that this feature is turned off from Internet Explorer so that PDF conversion process is not interrupted.
/pdfa	Specifies that the output PDF should be PDF/A-1b compliant
/pdfx1a	Specifies that the output PDF should be PDF/X-1a compliant
/pdfx3	Specifies that the output PDF should be PDF/X-3 compliant
/weboptimize	Specifies that the output PDF should be Linearized (web optimized)
/convertattachments	When converting from .msg files, the output PDF will contain converted attachment pages as well as the converted email.
/IncludeDocumentMarkups	For word documents, setting this option to true will include comments and markups in the generated PDF.

Example Commands :

Convert the Excel spreadsheet sales.xls to PDF. The result file will be in the same directory as the source file (as targetfolder was not specified).. All the sheets in the spreadsheet will be printed, using landscape orientation.

```
topdf.exe /source=c:\infolder\sales.xls  
/paperorientation=PRN_PAPER_ORIENT_LANSCAPE /printallsheets=true
```


Convert all the files in c:\infolder to PDF and place the output files in c:\outfolder. The output file name will be converted_FILENAME.pdf where FILENAME was the original file name prefix. Eg sales.xls is converted to converted_sales.xls.

```
topdf.exe /source=c:\infolder\*. * /targetfolder=c:\outfolder
/output=converted_%FILENAME.pdf
```

4.3 Configuration File

The configuration file topdf.exe.config (in the PDF Junction bin directory) is used to define a default set of parameters for PDF conversion.

Additional Configuration variables that can only be set via the configuration file are as follows :

Command Line / Config File Name	Description
WordExtension	A list of file extensions to be printed to PDF via MS Word.
WordExtensionEx	A list of file extensions to be printed to PDF via MS Word. An advantage of this is that you can convert your files even when no one is logged on to the server. this option is only supported by microsoft office 2007 and 2010.
ExcelExtension	A list of file extensions to be printed to PDF via Excel
PowerPointExtension	A list of file extensions to be printed to PDF via PowerPoint
VisioExtension	A list of file extensions to be printed to PDF via Visio
IEExtension	A list of file extensions to be printed to PDF via IE.
OutlookExtension	A list of file extensions to be printed to PDF via Outlook
OpenOfficeExtension	A list of file extensions to be printed to PDF via Open Office
AutoExtension	A list of file extensions to be printed according to automatic determination.
AutoExtensionEx	A list of file extensions to be printed according to automatic determination. This work with Microsoft office 2007 or 2010, it requires office to have the save as pdf add in.
AutoExtensionOpenNative	A list of file extensions to be printed to PDF via Open Office
GenericExtension	A list of file extensions to be printed via the Generic interface which does not support any of the application-specific parameters.
ExcludedExtensions	A list of file extensions to be excluded from processing.

```
<?xml version="1.0" encoding="utf-8" ?>
<configuration>
<appSettings>

<!-- Word Settings -->
<add key="Convertbookmarks" value="false" />
<add key="Bookmarkdepth" value="Heading 1|1|Heading 2|2|Heading 3|3"
/>
<add key="Converthyperlinks" value="false" />
<add key="Documentpassword" value="" />
<add key="IncludeDocumentMarkups" value="false" />

<!-- Extension Mapping -->
<add key="AutoExtension" value="" />
<add key="AutoExtensionEx" value=".rtf" />
<add key="AutoExtensionOpenNative" value="" />
<add key="GenericExtension" value="" />
<add key="WordExtension" value="" />
```

```

<add key="WordExtensionEx" value=".doc.docx.txt" />
<add key="ExcelExtension" value=".xls.xlsx" />
<add key="PowerPointExtension" value=".ppt.pptx" />
<add key="VisioExtension" value=".vsd" />
<add key="IEExtension" value=".xml" />
<add key="IEExtendedExtension" value=".htm.html.mht" />
<add key="OutlookExtension" value=".msg" />
<add key="OpenOfficeExtension"
value=".odt.swx.wpd.ods.sxc.odp.sxi.odg.sxd" />
<add key="ExcludedExtensions" value=".pdf.zip.exe.pps.ps.chm" />

<!-- Create Folders -->
<add key="CreateFolders" value="true" />

<!-- Page Settings -->
<add key="PaperOrientation" value="PRN_PAPER_ORIENT_PORTRAIT" />

<!-- Timeout -->
<add key="FileConversionTimeout" value="0" />

</appSettings>
</configuration>

```

The configuration file can be amended to change the product behaviour – for example, to use Open Office rather than Microsoft Word to convert .doc .docx .rtf and .txt files you can make the following two changes :

```

<add key="WordExtension" value="" />
<add key="OpenOfficeExtension"
value=".odt.swx.wpd.ods.sxc.odp.sxi.odg.sxd.rtf.doc.docx.txt" />

```

Some of the above options handle the same type of files but they handle them differently. and you can switch between the options if one does not work for your file..

5 PDF TO TIFF CONVERSION COMMAND LINE INTERFACE

5.1 Command Line Interface

A command line interface to PDF to TIFF conversion is provided topdf.exe in the PDF Junction bin directory

```
pdf2tiff.exe /source=sourcefiledefinition {/option=value}
```

Command Line / Config File Name	Description
/Source	Source file definition.
/Target	Output folder. If not specified the result file will be placed in the same folder as the source file.
/Output	Output file name. If not specified the output file name will be the same as the source file with a .tif extension instead of a .pdf one.
/TIFFCompression	GROUP4 or LZW. If not specified the default of GROUP4 will be used.
/TIFFResolution	The DPI of the output file. If not specified the default of 200 DPI will be used.

6 PDF TEXT EXTRACTION COMMAND LINE INTERFACE

6.1 Command Line Interface

A command line interface to PDF text extraction is provided to pdf.exe in the PDF Junction bin directory

```
pdf2txt.exe /source=sourcefiledefinition {/option=value}
```

Command Line / Config File Name	Description
/Source	Source file definition.
/Target	Output folder. If not specified the result file will be placed in the same folder as the source file.
/Output	Output file name. If not specified the output file name will be the same as the source file with a .txt extension instead of a .pdf one.
/PageFrom	First page to be processed. If not specified processing will start at page 1.
/PageTo	Last page to be processed. If not specified processing will end at the last page.
/PageSep	Page separator string which will be inserted in the text file between pages.

7 WEB OPTIMIZATION (LINEARIZATION) COMMAND LINE INTERFACE

7.1 Command Line Interface

A command line interface to web optimization is provided to pdfo.exe in the PDF Junction bin directory

```
pdfo.exe /source=sourcefiledefinition {/option=value}
```

Command Line / Config File Name	Description
/Source	Source file definition.
/Target	Output folder. If not specified the result file will be placed in the same folder as the source file.
/Output	Output file name.

PDF Junction allows the setting of XMP Metadata and custom DocInfo metadata. XMP (Extensible Metadata Platform) facilitates the embedding of metadata in PDF files using a subset of RDF. For further XMP background information see <http://www.adobe.com/products/xmp/>.

Note : Any existing XMP metadata in the source file will not be copied into the new file, so the directive XML file needs to include all required XMP metadata. However, existing DocInfo metadata can be automatically mapped to XMP – see below for further details.

8.1 Setting Metadata

To set metadata, an XML directive file is required. By default the file is expected to be named *filename.xml* where *filename.pdf* is the name of the source PDF file.

Directive files should follow the model shown below. A sample PDF and XML directive file can be found in the PDF Junction xmp folder (usually C:\Program Files\Aquaforest\PDF Junction 2.5\xmp).

```
<?xml version='1.0' encoding='utf-8'?>
<rdf:RDF xmlns:rdf="http://www.w3.org/1999/02/22-rdf-syntax-ns#">
<setxmp type='MAPINFO'>
  <custom name='RiskID' value='12345'></custom>
  <custom name='Department' value='AS12'></custom>
  <rdf:Description rdf:about=''
xmlns:pdfaid='http://www.aiim.org/pdfa/ns/id/'>
    <pdfaid:part>1</pdfaid:part>
    <pdfaid:conformance>B</pdfaid:conformance>
  </rdf:Description>
  <rdf:Description about=''
xmlns:stEvt='http://ns.adobe.com/xap/1.0/sType/ResourceEvent#'
xmlns:xmpMM='http://ns.adobe.com/xap/1.0/mm/'>
    <xmpMM:DocumentID>adobe:docid:indd:9705C6F1-8db6-11d5-a7dd-
cdf3d5439594</xmpMM:DocumentID>
    <xmpMM:History>
      <rdf:Seq>
        <rdf:li rdf:parseType='Resource'>
          <stEvt:action>rendition created</stEvt:action>
          <stEvt:parameters>some additional info</stEvt:parameters>
          <stEvt:softwareAgent>Adobe Photoshop 6.0 for
Windows</stEvt:softwareAgent>
          <stEvt:when>2001-07-25T09:45:06-07:00</stEvt:when>
        </rdf:li>
        <rdf:li rdf:parseType='Resource'>
          <stEvt:action>version 5 created</stEvt:action>
          <stEvt:parameters>helpful info</stEvt:parameters>
          <stEvt:softwareAgent>Adobe InDesign 2.0 for
Windows</stEvt:softwareAgent>
          <stEvt:when>2001-08-10T10:45:39Z</stEvt:when>
        </rdf:li>
      </rdf:Seq>
    </xmpMM:History>
  </rdf:Description>
</setxmp>
</rdf:RDF>
```

Tag	Notes																																													
Setxmp	<p>Required. Type should be either “MAPINFO” or “NOMAPINFO”. If set to “MAPINFO” then the standard PDF Info Dictionary items will be mapped to their XMP equivalents as described in the ISO 19005 (PDF/A) crosswalk as shown below.</p> <table border="1"> <thead> <tr> <th>Entry</th> <th>PDF</th> <th>Property</th> <th>XMP</th> <th>type</th> </tr> </thead> <tbody> <tr> <td>Title</td> <td><i>text</i></td> <td>dc:title</td> <td><i>Text</i></td> <td></td> </tr> <tr> <td>Author</td> <td><i>text</i></td> <td>dc:creator</td> <td><i>seq</i></td> <td><i>Text</i></td> </tr> <tr> <td>Subject</td> <td><i>text</i></td> <td>dc:subject</td> <td><i>Text</i></td> <td></td> </tr> <tr> <td>Keywords</td> <td><i>text</i></td> <td>pdf:Keywords</td> <td><i>Text</i></td> <td></td> </tr> <tr> <td>Creator</td> <td><i>text</i></td> <td>xmp:CreatorTool</td> <td><i>Text</i></td> <td></td> </tr> <tr> <td>Producer</td> <td><i>text</i></td> <td>pdf:Producer</td> <td><i>Text</i></td> <td></td> </tr> <tr> <td>CreationDate</td> <td><i>date</i></td> <td>xmp:CreateDate</td> <td><i>Date</i></td> <td></td> </tr> <tr> <td>ModDate</td> <td><i>date</i></td> <td>xmp:ModifyDate</td> <td><i>Date</i></td> <td></td> </tr> </tbody> </table>	Entry	PDF	Property	XMP	type	Title	<i>text</i>	dc:title	<i>Text</i>		Author	<i>text</i>	dc:creator	<i>seq</i>	<i>Text</i>	Subject	<i>text</i>	dc:subject	<i>Text</i>		Keywords	<i>text</i>	pdf:Keywords	<i>Text</i>		Creator	<i>text</i>	xmp:CreatorTool	<i>Text</i>		Producer	<i>text</i>	pdf:Producer	<i>Text</i>		CreationDate	<i>date</i>	xmp:CreateDate	<i>Date</i>		ModDate	<i>date</i>	xmp:ModifyDate	<i>Date</i>	
Entry	PDF	Property	XMP	type																																										
Title	<i>text</i>	dc:title	<i>Text</i>																																											
Author	<i>text</i>	dc:creator	<i>seq</i>	<i>Text</i>																																										
Subject	<i>text</i>	dc:subject	<i>Text</i>																																											
Keywords	<i>text</i>	pdf:Keywords	<i>Text</i>																																											
Creator	<i>text</i>	xmp:CreatorTool	<i>Text</i>																																											
Producer	<i>text</i>	pdf:Producer	<i>Text</i>																																											
CreationDate	<i>date</i>	xmp:CreateDate	<i>Date</i>																																											
ModDate	<i>date</i>	xmp:ModifyDate	<i>Date</i>																																											
Custom	Optional. This can be used to specify name / value pairs for custom entries in the PDF Info Dictionary. The custom DocInfo metadata is visible in Adobe Acrobat via File Document Properties Custom.																																													
Rdf:Description	<p>Optional. This can be used to define the RDF for a particular XMP schema. XMP Metadata is visible in Adobe Acrobat via File Document Properties Description Additional Metadata Advanced.</p> <p>The Adobe XMP reference fully describes XMP syntax.: http://www.adobe.com/devnet/xmp/pdfs/xmp_specification.pdf</p>																																													

8.2 Command Line Interface

A command line interface to PDF to TIFF conversion is provided topdf.exe in the PDF Junction bin directory

```
setxmp.exe /source=sourcefile /target=targetfile /output=outfilefile [/debug=true] [/xmlfile=xmlfile]
```

For example, the following command processes the file test.pdf using the directive file test.xmp in the same folder (this is the default assumption unless /xmlfile is specified). The output PDF is written to the d:\dev\out folder and is called test_xmp.pdf.

```
setxmp.exe" /output="%FILENAME_xmp.pdf" /Source="D:\dev\test.pdf" /Target="D:\dev\out"
```

Command Line / Config File Name	Description
/Source	Source file definition.
/Target	Output folder. If not specified the result file will be placed in the same folder as the source file.
/Output	Output file name mask. May include %FILENAME If not specified the output file name will be based on the source file name.
/xmlfile	This specifies the XML directive file. If not specified, the XML directive file is assumed to be %FILENAME.xml where the source file is %FILENAME..pdf.

9 XML JOB TICKET FILES

PDF Junction uses XML Job Ticket files to store details of a particular job specification before this is run using the product either from the GUI or using the /jobid option from the command line – see 3.2.1. Note that some functionality, in particular custom scripts and logfiles can only be used in conjunction with XML Job Ticket files. Other functionality can also be used via the equivalent command line flags.

Developers may wish to create or generate XML job files using the information below.

A sample job file is shown here :

```
<pdfjunction_job>
<operation>split</operation>
<sourcetype>folder</sourcetype>
<sourcefiles>C:\qatest\pj\in\set001</sourcefiles>
<target>c:\qatest\pj\out\qa001</target>
<joboptions>-o -c -f %F%\%U%</joboptions>
<metadata></metadata>
<security></security>
<docoptions></docoptions>
<custom_script>custom.wsf</custom_script>
<custom_script_pre_job>>true</custom_script_pre_job>
<custom_script_post_job></custom_script_post_job>
<custom_script_pre_folder></custom_script_pre_folder>
<custom_script_post_folder></custom_script_post_folder>
<custom_script_pre_file>>true</custom_script_pre_file>
<custom_script_post_file></custom_script_post_file>
<custom_script_on_error></custom_script_on_error>
<logfile>qa001.txt</logfile>
</pdfjunction_job>
```

Attribute	Description
operation	Must be split, merge, set, get or pdf (for conversion to PDF)
sourcetype	Source type (file, folder, tree). The default value is file.
target	Target directory for result files. If not specified, the source directory will be used as the target.
Joboptions	Set of options for the specified operation. Described in detail in section 5.3.
Metadata	Metadata settings for result PDF files. By default metadata fields are left blank. Described in detail in section 5.4.
Security	Security settings for result PDF files. By default files are not secured. Described in detail in section 5.5.
docoptions	Document option settings for result PDF files. Described in detail in section 5.6.
Sourcefiles	Source PDF file, folder or tree. May be multiple files for merge operations.
custom_script	If not left blank, specifies the name of a custom windows script file in <i>PDFJUNCTIONDIR</i> that will be called in accordance with the custom_script_* settings below.
custom_script_pre_job	If =Y, the custom script will be called at the start of the job
custom_script_post_job	If =Y, the custom script will be called at the end of the job
custom_script_pre_folder	If =Y, the custom script will be called at the start of processing each folder
custom_script_post_folder	If =Y, the custom script will be called at the end of processing each folder
custom_script_pre_file	If =Y, the custom script will be called at the start of processing each file
custom_script_post_file	If =Y, the custom script will be called at the end of processing each file
custom_script_on_error	If =Y, the custom script will be called when a processing error occurs.
logfile	If specified, output will be logged to a file with this name in <i>PDFJUNCTIONDIR</i> \logs

10 CUSTOM SCRIPTS

The functionality of PDF Junction can be extended by using custom scripts which may be called at various points during the processing of a particular job. The custom scripts are Windows Script Files which allow scripting in either VBScript or Jscript.

Custom scripts reside in *PDFJUNCTIONDIR*\custom. In order to implement custom scripts, a developer should take a copy of the script template (custom.wsf, shown below) and implement the script according to their requirements. The custom script name should be specified and required exists should be flagged as being called, either using the GUI or directly in the Job Ticket File (See section 4).

Parameters are passed as follows :

Parameter	Description
jobid	The current job id
currentfolder	The path of the folder currently being processed, or "null" for non-applicable exits (eg job_start)
currentfile	The path of the file currently being processed, or "null" for non-applicable exits (eg job_start)
exitpoint	One of the following string values, according to the exit point that was called. pre_job post_job pre_folder post_folder pre_file post_file on_error

```
<job>
<runtime>
  <named name="jobid" helpstring="Job ID" type="string" required="false"/>
  <named name="currentfolder" helpstring="Current Folder" type="string" required="false" />
  <named name="currentfile" helpstring="Current File" type="string" required="false" />
  <named name="exitpoint" helpstring="Script Exit Point" type="string" required="false" />
</runtime>
<script language="VBScript">
'
' Use this section for VBSript
'
'jobID=WScript.Arguments.Named("jobid")
'currentFolder=WScript.Arguments.Named("currentfolder")
'currentFile=WScript.Arguments.Named("currentfile")
'exitPoint=WScript.Arguments.Named("exitpoint")
'WScript.StdOut.WriteLine("Parameter Values - "+jobID+"."+currentFolder+"."+currentFile+"."+exitPoint)
</script>
<script language="JScript">
//
// Use this section for JScript
//
var jobID=WScript.Arguments.Named("jobid");
var currentFolder=WScript.Arguments.Named("currentfolder");
var currentFile=WScript.Arguments.Named("currentfile");
var exitPoint=WScript.Arguments.Named("exitpoint");
WScript.StdOut.WriteLine("Parameter Values - "+jobID+"."+currentFolder+"."+currentFile+"."+exitPoint);
</script>
</job>
```


11 XML “INFORMATION” FILES

PDF Junction can be used to generate XML files containing metadata relating to source PDF files, as in the following example :

```
cscript pdfjunction.wsf /operation:get /target:c:\demo\out
c:\demo\in\demo3.pdf "/joboptions:-f %F%_metadata"
```

Attribute	Description
Path	Full path name of the PDF file
Pages	The number of pages in the document
Title Author Subject Keywords Creator	PDF Document Metadata
Pdfversion	Version of PDF that the document complies with
Filesize	The size in bytes of the file
Permissions	Permissions bit mask. If set to 0, there is no security set on the file.
Isencrypted	True if the file is encrypted
Xmlmetadata	The XML PDF metadata as extracted from the document. See XXX for more details.

```
<?xml version="1.0"?>
<pdfdocument>
<path>c:\demo\in\demo3.pdf</path>
<pages>3</pages>
<title>1</title>
<author>Neil Pitman</author>
<subject></subject>
<keywords></keywords>
<creator>Acrobat PDFMaker 6.0 for Word</creator>
<pdfversion>5</pdfversion>
<filesize>517811</filesize>
<permissions>0</permissions>
<isencrypted>>false</isencrypted>
<xmlmetadata>
<?xpacket begin='ï¿' id='W5M0MpCehiHzreSzNTczkc9d'?>
<?adobe-xap-filters esc="CRLF"?>
<x:xmpmeta xmlns:x='adobe:ns:meta/' x:xmptk='XMP toolkit 2.9.1-13, framework 1.6'>
<rdf:RDF xmlns:rdf='http://www.w3.org/1999/02/22-rdf-syntax-ns#'
xmlns:iX='http://ns.adobe.com/iX/1.0/'>
....
<rdf:Description rdf:about='uuid:3a543dda-858c-4fb6-88f9-3b7358591e42'
xmlns:dc='http://purl.org/dc/elements/1.1/'
dc:format='application/pdf'><dc:title><rdf:Alt><rdf:li xml:lang='x-
default'>1</rdf:li></rdf:Alt></dc:title><dc:creator><rdf:Seq><rdf:li>Neil
Pitman</rdf:li></rdf:Seq></dc:creator><dc:subject><rdf:Seq><rdf:li></rdf:li></rdf:Seq>
</dc:subject></rdf:Description>
</rdf:RDF>
</x:xmpmeta>
<?xpacket end='w'?>
</xmlmetadata>
</pdfdocument>
```

12 PDF JUNCTION FILES AND DIRECTORIES

After installation, the following subdirectories are created in the PDF Junction install directory :

Directory	Contents
bin	Executables and Scripts.
docs	Reference Guide
jobs	Standard directory for XML Job Ticket files.
logs	Log files
temp	Temporary storage for XML Job Ticket files.
License	License File.

13 SUPPORT

Any problems running this application should give evident error messages, but if you are unable to resolve a problem please contact support@aquaforest.com

14 ACKNOWLEDGEMENTS

PDF Junction makes use of the iText Java library under the Mozilla Public License. See <http://www.lowagie.com/iText/> for more information.

PDF Junction makes use of the JSAP argument parser under the LGPL, with clarification of usage as dynamic linking. See <http://www.martiansoftware.com/jsap/index.html> for more information.